

56 HARD TOP — ATLANTIC



Builder: ATLANTIC

Year Built: 2014

Model: Motor Yacht

Price: PRICE ON APPLICATION

Location: Netherlands

LOA: 61' 1" (18.62m)

Beam: 16' 0" (4.88m)

Max Draft: 4' 3" (1.30m)

Our experienced yacht broker, Andrey Shestakov, will help you choose and buy a yacht that best suits your needs 56 Hard Top — ATLANTIC from our catalogue. Presently, at Shestakov Yacht Sales Inc., we have a wide variety of yachts available on our sale's list. We also work in close contact with all the big yacht manufacturers from all over the world.

If you would like to buy a yacht 56 Hard Top — ATLANTIC or would like help answering any questions concerning purchasing, selling or chartering a yacht, please call +1(954)274-4435

TABLE OF CONTENTS

TABLE OF CONTENTS	2
SPECIFICATIONS	4
Overview	4
Basic Information	4
Dimensions	5
Speed, Capacities and Weight	5
Accommodations	5
Hull and Deck Information	5
Engine Information	6
DETAILED INFORMATION	7
Accommodations	7
Galley	7
Electrical System	7
Electronics and Navigational Equipment	7
Deck	7
Engines	8
Exclusions	8
Disclaimer	8
PHOTOS	9
SALON	9
AFT DECK LOUNGE	9
AFT DECK LOUNGE	9
MASTER STATEROOM	9
GALLEY	9
STERN	9
HEAD TOILET	10
56HT	10
GUEST CABIN	10

HELM	10
VIP SUITE	11
CONTACTS	12
Contact details	12
Telephones	12
Office hours	12
Address	12

SPECIFICATIONS

Overview

Commissioned by Atlantic Motoryachts, Vripack Naval Architects of Sneek have developed an entirely new Atlantic, the 56 twindeck. In a market where there is much supply, but also much of the same, Atlantic Motoryachts now brings a revolutionary design. Everything has been finished flush with the surface as much as possible, such as: Anchor assembly concealed below deck - Storage fenders below deck - Concealed hydraulic passerelle/gangway - The wheelhouse roof is fitted with a panoramic, electrically operated sliding roof, completely flush concealed - Joystick steering, regardless of situation you are in, you can maneuvers in any direction with just one hand - Twin Deck, in both cases headroom.

CUSTOM QUALITY BUILD

Most of the Atlantic Motoryachts are built to satisfy the personal taste of the owners. From the Atlantic 460 to the prestigious Atlantic 56HT, the interior is completely custom build.

With Custom Quality Build we mean as much as: "You can design the complete interior of your own version of the Atlantic Motoryacht of your choice. We build it, if technically possible!" With our interior designers we will discuss your wishes, from Lay-out to styling, and find your exact demands. Our meaning of Custom Quality Build is: 'Exceeding what the client expects'. Our team closely monitors the quality in every detail, whether that is technical finish or performance, to ensure the full satisfaction of the owner.

What you want is what we build!

Atlantic Motoryacht Quality Each Atlantic yacht built in our boatyard is subject to stringent quality monitoring, from the laying of the keel to the tightening of the last screw, all with superb fit and finish. This is reassuring because it means you depend fully on your vessel in each and every situation. Place your trust in a boatyard that is geared to meet your exact requirements.

Basic Information

Category: Motor Yacht

Sub Category: Tri-Cabin

Model Year: 2014

Year Built: 2014

Country: Netherlands

Vessel Top: 2363

Dimensions

LOA: 61' 1" (18.62m)

LOD: 56' 0" (17.07m)

Beam: 16' 0" (4.88m)

Max Draft: 4' 3" (1.30m)

Clearance: 11' 7" (3.53m)

MFG Length: 56' 0" (17.07m)

Speed, Capacities and Weight

Displacement: 50706.32026 Pounds

Water Capacity: 208 Gallons

Holding Tank: 104 Gallons

Fuel Capacity: 677 Gallons

Accommodations

Total Cabins: 3

Total Berths: 6

Sleeps: 6

Total Heads: 2

Hull and Deck Information

Hull Material: Fiberglass

Deck Material: Fiberglass

Hull Configuration: Semi Vee

Hull Color: any

Hull Finish: Stainless Steel

Hull Designer: John A. Bennett & Associates.

Exterior Designer: John A. Bennett & Associates.

Interior Designer: John A. Bennett & Associates.

Engine Information

Engines: 2

Manufacturer: Volvo Penta

Model: D12

Engine Type: Inboard

Fuel Type: Diesel

DETAILED INFORMATION

Accommodations

Amidships there is the owner's cabin with its own separate shower and toilet. Next door there is a space with washing machine and a separate dryer.

In the forward area there is a room that can be used as a guest cabin with a luxurious French double bed.

On the starboard side forward there is a room that may be used as a third bedroom with a set of bunk beds or as a study/office.

There is a second bathroom unit forward, featuring shower, toilet and washing machine.

Galley

- In the centre there is the pantry, luxury outfit, microwave oven, refrigerator with spacious freezer compartment,

ceramic cooking ring with four burners a dishwasher are standard equipment. An important aspect of the pantry is the settee on three sides.

Electrical System

Generator 12 KW, voltage and frequency compatible with geographic area of delivery.

Electronics and Navigational Equipment

Navigation System (equal current models) * navigation system is limited towards to an amount of Euro 15.000 excl vat. Raymarine Autopilot ST 7001 Plus Camera/PC In Engine Room, Aft Deck, Connected To Plotter

- LCD TV DVD/CD Player & Surround system
- Satellite Antenna Trac Vision 3

Deck

Layout lounge / afterdeck: In the centre are the controls from where the ship can be directed from

a comfortable pilot's seat. On portside there is a round settee with two luxurious club chairs. The audio/video set consists of a Dolby surround system of the make you prefer together with CD/DVD/TV and flat panel forming an integral part of the interior.

- A spacious afterdeck with a wheelhouse bench where the lounge table can be stored.
- Fore deck with big sun-deck and underneath storage space for moorings etc.

Engines

Standard engines: Volvo Penta D12 2 x 675 pk Other engines are available upon request. IPS Drives

Exclusions

Owner's personal belongings.

Disclaimer

The Company offers the details of this vessel or yacht in good faith but cannot guarantee or warrant the accuracy of this information nor warrant the condition of the vessel. A buyer should instruct his representatives, agents, or his surveyors, to investigate such details as the buyer desires validated. This vessel or yacht is offered subject to prior sale, price change, or withdrawal without notice.

PHOTOS

SALON



AFT DECK LOUNGE



AFT DECK LOUNGE



MASTER STATEROOM



GALLEY



STERN



56HT



HEAD TOILET



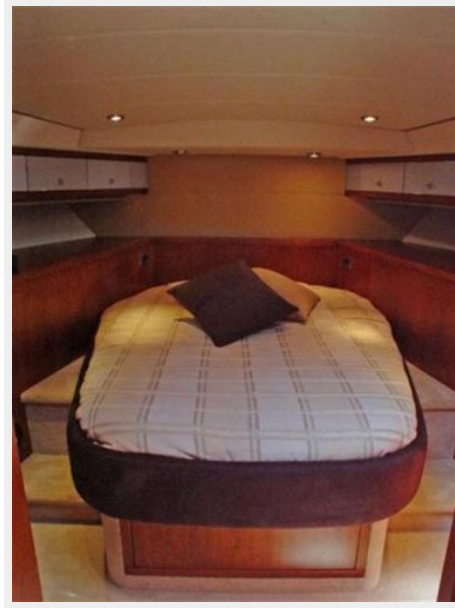
GUEST CABIN



HELM



VIP SUITE



CONTACTS

Andrey Shestakov, leading yacht broker of the sales department of Shestakov Yacht Sales Inc. Shestakov Yacht Sales Inc., the official representative of the Miami/Fort Lauderdale FL headquarters.

Contact details

Email: andrey@shestakovyachtsales.com

Web: shestakovyachtsales.com/en/

Telephones

USA: +1(954)274-4435

Office hours

Monday – Saturday: **9:00 - 21:00** EDT

Sunday: **closed**

Address



Harbour Towne Marina, 850 NE 3rd St,
STE 213, Dania, FL 33004