

## SLIP KNOT — SEA RAY



**Builder:** SEA RAY

**Year Built:** 1988

**Model:** Sport Fisherman

**Price:** PRICE ON APPLICATION

**Location:** United States

**LOA:** 43' 0" (13.11m)

**Beam:** 14' 0" (4.27m)

**Max Draft:** 2' 8" (0.81m)

**Cruise Speed:** 20 Kts. (23 MPH)

**Max Speed:** 25 Kts. (29 MPH)

Our experienced yacht broker, Andrey Shestakov, will help you choose and buy a yacht that best suits your needs **Slip Knot — SEA RAY** from our catalogue. Presently, at Shestakov Yacht Sales Inc., we have a wide variety of yachts available on our sale's list. We also work in close contact with all the big yacht manufacturers from all over the world.

If you would like to buy a yacht **Slip Knot — SEA RAY** or would like help answering any questions concerning purchasing, selling or chartering a yacht, please call **+1(954)274-4435**

# TABLE OF CONTENTS

---

TABLE OF CONTENTS	2
SPECIFICATIONS	4
Overview	4
Basic Information	4
Dimensions	4
Speed, Capacities and Weight	4
Hull and Deck Information	5
Engine Information	5
DETAILED INFORMATION	6
Layout	6
Electronics and Navigational Equipment	6
Electrical System	6
Deck/Hull/Construction	6
Engine Room	6
Exclusions	6
Exclusions	6
Disclaimer	7
PHOTOS	8
At Dock	8
Bow	8
Stern	8
Helm	8
Helm Seating	8
Bridge Seating	8
Bridge Wetbar	9
Salon	9
Dinette	9
Galley	9

---

Under Counter Fridge/Freezer	9
Master	10
Master 2	10
Guest	10
Head	10
Head 2	11
Engine Room	11
Engine	11
Generator	11
CONTACTS	12
Contact details	12
Telephones	12
Office hours	12
Address	12

---

# SPECIFICATIONS

---

## Overview

---

"Slip Knot" is a very clean 43/44 Sea Ray Convertible that has been maintained to high standards by a knowledgeable owner. Featuring a large and modern two stateroom layout with plenty of interior and exterior room thanks to her generous 14' beam, "Slip Knot" is equally at home cruising and entertaining or dropping a line to fish from her spacious cockpit. "Slip Knot" has been lightly used for cruising here on the Chesapeake Bay by her former and current owners, has low hour CAT 3208 Diesels (1,000 hour service performed early, as good maintenance practice), generator, AirSeps, custom half tower, large galley with under counter sub zeros, and is in excellent condition. Just bottom painted, waxed, detailed, and serviced in July of 2009. Ready to be enjoyed immediately! Easy to see in Baltimore's Inner Harbor, 20 minutes from Baltimore Washington International Airport (BWI) and just minutes off I-95 by car. Please call for a showing today!

## Basic Information

---

**Category:** Sport Fisherman

**Sub Category:** Convertible

**Model Year:** 1988

**Year Built:** 1988

**Country:** United States

**Fly Bridge:** Yes

**Cockpit:** Yes

## Dimensions

---

**LOA:** 43' 0" (13.11m)

**Beam:** 14' 0" (4.27m)

**Max Draft:** 2' 8" (0.81m)

## Speed, Capacities and Weight

---

**Cruise Speed:** 20 Kts. (23 MPH)

**Max Speed:** 25 Kts. (29 MPH)

**Water Capacity:** 132 Gallons

**Fuel Capacity:** 500 Gallons

---

## Hull and Deck Information

---

**Hull Material:** Fiberglass

## Engine Information

---

**Engines:** 2

**Manufacturer:** Caterpillar

**Model:** 3208TA

**Engine Type:** Inboard

**Fuel Type:** Diesel

---

## DETAILED INFORMATION

---

### Layout

---

Sharp Color TV Mitsubishi VHS Sony AM/FM Stereo Tuner Sony CD/DVD Player Central Vac Wetbar w/ Ice Maker Princess 3 Burner Stove Panasonic Microwave Built In B&D Coffee Maker Large Galley Sink Under Counter Sub Zero Refrigerator Under Counter Sub Zero Freezer A/C and Heat with Digital Controls VacuFlush Head Stall Shower

### Electronics and Navigational Equipment

---

Furuno Radar Furuno GP-1650 Color GPS/Chartplotter Standard VHF Standard Hailer Icom VHF External VHF Speaker Depthfinder Digital Compass

### Electrical System

---

Westerbeke Diesel Generator (225 hrs.) 12 Volt Systems 110 Volt Systems Batteries Battery Charger Shorepower Service

### Deck/Hull/Construction

---

Flybridge Wetbar Flybridge Refrigerator/Freezer Flybridge Seating Forward Flybridge Helm and Companion Seat Custom Half Tower Full Four Side Enclosure Winter Bridge Enclosure Cockpit Canvas Cover Swim Platform Swim Ladder Cockpit Door Cockpit Gate Remote Spotlight

### Engine Room

---

AirSeps Dual Racor Filters

### Exclusions

---

While every effort was made to include all pertinent included equipment aboard "Slip Knot", there are some personal items aboard. Prospective purchasers should assume any item not specifically mentioned herein would not convey at closing. Refer specific items in question to the listing broker.

### Exclusions

---

Owner's personal belongings.

## **Disclaimer**

---

The Company offers the details of this vessel or yacht in good faith but cannot guarantee or warrant the accuracy of this information nor warrant the condition of the vessel. A buyer should instruct his representatives, agents, or his surveyors, to investigate such details as the buyer desires validated. This vessel or yacht is offered subject to prior sale, price change, or withdrawal without notice.

# PHOTOS

**At Dock**



**Bow**



**Stern**



**Helm**



**Helm Seating**



**Bridge Seating**





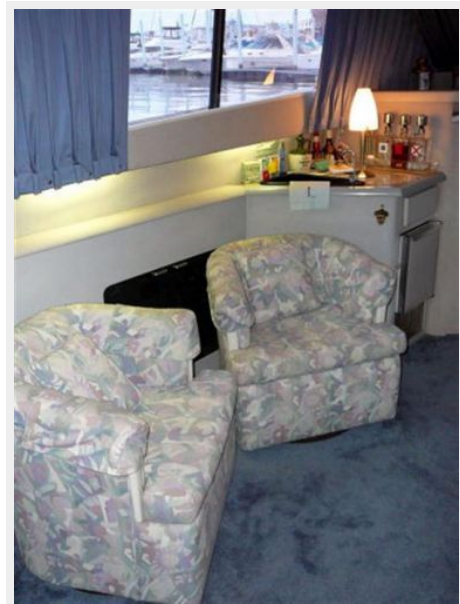
**Bridge Wetbar**



**Salon**



**Dinette**



**Galley**



**Under Counter Fridge/Freezer**



**Master**



**Master 2**



**Guest**



**Head**





**Head 2**



**Engine Room**



**Engine**



**Generator**



# CONTACTS

---

Andrey Shestakov, leading yacht broker of the sales department of Shestakov Yacht Sales Inc. Shestakov Yacht Sales Inc., the official representative of the Miami/Fort Lauderdale FL headquarters.

## Contact details

---

Email: [andrey@shestakovyachtsales.com](mailto:andrey@shestakovyachtsales.com)

Web: [shestakovyachtsales.com/en/](http://shestakovyachtsales.com/en/)

## Telephones

---

USA: +1(954)274-4435

## Office hours

---

Monday – Saturday: **9:00 - 21:00** EDT

Sunday: **closed**

## Address

---



Harbour Towne Marina, 850 NE 3rd St,  
STE 213, Dania, FL 33004