

## HI LIFE — PACIFIC MARINER



**Builder:** PACIFIC MARINER

**Year Built:** 2007

**Model:** Motor Yacht

**Price:** PRICE ON APPLICATION

**Location:** United States

**LOA:** 65' 0" (19.81m)

**Beam:** 17' 4" (5.28m)

**Min Draft:** 5' 0" (1.52m)

**Cruise Speed:** 21 Kts. (24 MPH)

**Max Speed:** 25 Kts. (29 MPH)

Our experienced yacht broker, Andrey Shestakov, will help you choose and buy a yacht that best suits your needs **HI LIFE — PACIFIC MARINER** from our catalogue. Presently, at Shestakov Yacht Sales Inc., we have a wide variety of yachts available on our sale's list. We also work in close contact with all the big yacht manufacturers from all over the world.

If you would like to buy a yacht **HI LIFE — PACIFIC MARINER** or would like help answering any questions concerning purchasing, selling or chartering a yacht, please call **+1(954)274-4435**

# TABLE OF CONTENTS

|                                 |    |
|---------------------------------|----|
| TABLE OF CONTENTS               | 2  |
| SPECIFICATIONS                  | 5  |
| Overview                        | 5  |
| Basic Information               | 5  |
| Dimensions                      | 5  |
| Speed, Capacities and Weight    | 5  |
| Accommodations                  | 6  |
| Hull and Deck Information       | 6  |
| Engine Information              | 6  |
| DETAILED INFORMATION            | 7  |
| Vessel Walkthrough              | 7  |
| Fore Deck/Side Decks            | 7  |
| Flybridge                       | 8  |
| Flybridge Electronics           | 9  |
| Tender                          | 9  |
| Pilothouse                      | 10 |
| Pilothouse Electronics          | 11 |
| Galley (up)                     | 12 |
| Electrical System               | 13 |
| Mechanical/Engine Room          | 14 |
| Salon                           | 16 |
| Aft Deck                        | 17 |
| Owner/Guest Accommodations      | 18 |
| Master Stateroom                | 19 |
| Twin Berth Port Guest Stateroom | 20 |
| Forward VIP Guest Stateroom     | 21 |
| Crew Quarters                   | 22 |
| Remarks                         | 23 |

|                         |    |
|-------------------------|----|
| Exclusions              | 23 |
| Exclusions              | 23 |
| Disclaimer              | 23 |
| PHOTOS                  | 24 |
| Bow                     | 24 |
| Bow                     | 24 |
| Side decks / Catwalk    | 24 |
| Wing Station            | 24 |
| Flybridge helm          | 25 |
| Flybridge Chairs        | 25 |
| Flybridge Settee        | 25 |
| Grill                   | 25 |
| Flybridge               | 25 |
| Tender                  | 25 |
| Pilothouse Helm         | 26 |
| Pilothouse Helm         | 26 |
| Pilothouse              | 26 |
| Pilothouse Settee       | 26 |
| Galley                  | 26 |
| Galley2                 | 26 |
| Starboard pilothouse    | 27 |
| Salon                   | 27 |
| Salon TV                | 27 |
| Salon                   | 27 |
| Salon                   | 27 |
| Aft Deck                | 27 |
| Aft Deck                | 28 |
| Aft Deck                | 28 |
| Stateroom companion way | 28 |

|                               |    |
|-------------------------------|----|
| Aft Deck control station      | 28 |
| Master Stateroom              | 28 |
| Master TV                     | 28 |
| Master stateroom Bath         | 29 |
| Master stateroom desk         | 29 |
| VIP stateroom                 | 29 |
| VIP stateroom TV              | 29 |
| VIP head                      | 29 |
| Twin Stateroom                | 29 |
| Twin Stateroom / Ensuite Head | 30 |
| Engines                       | 30 |
| Engine Room                   | 30 |
| Engine Room                   | 30 |
| Crew Berths                   | 30 |
| Crew TV                       | 30 |
| Crew                          | 31 |
| Swim Platform                 | 31 |
| Layout                        | 31 |
| CONTACTS                      | 32 |
| Contact details               | 32 |
| Telephones                    | 32 |
| Office hours                  | 32 |
| Address                       | 32 |

# SPECIFICATIONS

## Overview

~DEAL PENDING~ This boat incorporated all the latest changes made to this series and many more upgrades done by her present knowledgeable and meticulous owner. Having only 750 original hours, maintained in new boat condition and aggressively priced, I feel there is not a better value in a 60' to 70' Pilothouse Motoryacht anywhere.

## Basic Information

|                        |                          |
|------------------------|--------------------------|
| Category: Motor Yacht  | Sub Category: Pilothouse |
| Model Year: 2007       | Year Built: 2007         |
| Country: United States | Vessel Top: Hardtop      |
| Fly Bridge: Yes        |                          |

## Dimensions

|                          |                      |
|--------------------------|----------------------|
| LOA: 65' 0" (19.81m)     | Beam: 17' 4" (5.28m) |
| Min Draft: 5' 0" (1.52m) |                      |

## Speed, Capacities and Weight

|                                |                             |
|--------------------------------|-----------------------------|
| Cruise Speed: 21 Kts. (24 MPH) | Cruise Speed Range: 900     |
| Max Speed: 25 Kts. (29 MPH)    | Displacement: 69000 Pounds  |
| Gross Tonnage: 40 Pounds       | Water Capacity: 285 Gallons |
| Holding Tank: 125 Gallons      | Fuel Capacity: 1100 Gallons |

---

## Accommodations

---

**Total Cabins:** 3

**Sleeps:** 6

**Total Heads:** 3

**Crew Cabin:** 1

**Crew Berths:** 2

---

## Hull and Deck Information

---

**Hull Material:** Fiberglass

**Deck Material:** Teak

**Hull Configuration:** Modified V-Hull

**Hull Finish:** Plastic

**Hull Designer:** William Garden

**Exterior Designer:** Greg Marshall

**Interior Designer:** Pacific Mariner Design  
team

---

## Engine Information

---

**Engines:** 2

**Manufacturer:** MTU

**Model:** Series 60

**Engine Type:** Inboard

**Fuel Type:** Diesel

---

# DETAILED INFORMATION

---

## Vessel Walkthrough

---

~**DEAL PENDING**~ Access through port and starboard Pilothouse sliding doors or Aft Deck into Salon, forward to up Galley/Pilothouse. Forward and down circular stairwell to Owner's/Guest Accommodations. Forward VIP Stateroom with centerline queen berth and en suite Head, aft to portside Twin Berth Stateroom with en suite Head which doubles as Day Head. Aft to large full beam Master Stateroom with centerline king berth, en suite Head. Fly bridge with hardtop. Aft Deck with built in seating, dining table, and access ladder to fly bridge/ boat deck. Also access to Crew Quarters and walk in Engine Room.

## Fore Deck/Side Decks

---

- Windlass/Lewmar 24V 3000 lbs. with chain wildcat
- Anchor 75 lb. CQR Plow style with 300' x 3/8" high tensile chain
- Stainless steel anchor mount with roller and safety pin
- Stainless steel 16" burgee staff
- Fiberglass non skid deck
- Storage locker with 26" x 26" Bomar hatch with fresh and seawater wash downs
- (2) 12" Stainless steel cleats with chafe guards
- Bow/Side deck rail with center lifeline port and starboard boarding gates
- Trunk cabin with recessed sun pad with cushions and dual grab rails
- VIP Stateroom opening escape hatch 28" x 28" Bomar
- Side decks with 1/4 + 3/4 cleats 12" stainless steel with chafe guards
- Cabin side safety grab rail
- Starboard side flip out wing control with clutch and throttles, start/stops, bow and stern thruster controls
- Fuel and water deck fills port starboard side
- Holding tank pump out deck fitting portside
- Walk around catwalks 12" w/safety rails

- Aft port and starboard docking windlasses (Lewmar) stainless steel with foot controls

## Flybridge

---

- Fiberglass hardtop with fiberglass arch and **upgraded** LED down lights.
- Tinted tempered glass windshield with 24" wiper with 2 speeds and washer
- Centerline Helm Station with cover, 24" stainless steel Destroyer style wheel and carbon fiber back plate
- Helm companion seat with arm and footrest and covers (Stidd)
- Portside cabinet with Norcold 24V refrigerator and drop leaf
- Additional 110V GFI outlet with waterproof cover
- Stainless steel life ring holder with life ring Type IV PDF with retrieve line.
- Access to Bridge w/Lexan sliding hatch and opening hinged door with lock
- (2) Built in drink holders Helm Console
- Starboard side "L" settee with cushions, storage below and cover
- Cocktail/dining table (4) person Corian 31" H with stainless steel base
- Flybridge /Boat Deck non skid fiberglass
- Electric Grill 16"x 10" Force with lid
- Davit (Nautical Structures) 24V hydraulic with power rotation and boom 1500 lbs
- Tender chocks with cable style tie downs for tender
- Boarding ladder Verticle (3) Step powder Coated white
- Custom boarding ladder stowage mounts
- (3) side bridge enclosure / EZ2CY ( Excellent Condition)
- (5) U Zips on Bridge Enclosure
- Fore and aft deck drains
- Life raft/ Winslow (6) man canister
- Aft Deck to Boat Deck access hatch 28" x 28" with Lexan insert (Bomar)

---

## Flybridge Electronics

---

- Depth finder digital w/alarm, Simrad with cover
- Knot meter, Simrad with cover
- Furuno Nav Net with 10" monitor chart plotter, radar, CCTV, depth graph with cover with C MAP
- CCTV - Cameras in Engine room and Aft Deck
- Compass Ritchie 3 1/2" magnetic
- Autopilot Simrad AP 26 plug in remote w/ 15' cable
- Rudder angle indicator, Simrad R135 w/cover
- Searchlight ACR URP-102 with cover
- VHF ICOM IC M422 with Icon command Mic for 2nd VHF
- Remote stabilizer control multi sea / digital
- Bow thruster control hydraulic w/on/off switch
- Stern Thruster Control / Electric Side power 24 v
- Horns Kahlenberg dual trumpet with compressor 24 v
- Main engine start and stops
- Clutch and throttles electronic MTU with synchronizer & low idle features
- Engine monitor display MTU digital w/covers
- Deck courtesy lights (5) LED 24V

---

## Tender

---

- 12' 2008 Carib Deluxe Hard bottom inflatable with cover
- Yamaha 40 HP ( 4) Stroke Electric Start with Trim Fin, cover, motor with power trim and tilt
- Center Console with tinted windshield and stainless grab rail
- Yamaha speedometer & tachometer

- Navigation lights
- Bilge pump Auto / Manual
- Pontoon inflation air pump
- Fire Extinguisher (1) hand held
- Fuel / Water separator filter Yamaha / Spin on Style
- Paddle (1)
- Courtesy deck light 12v
- Fresh water shower with 12 v pump
- (2) throw cushions
- Battery 12v with Battery switch
- Bow cleat 4.5 stainless pop up

## Pilothouse

---

- Headroom 6' 7"
- Forward Pilothouse windows 1/2" thick with "V" cool UV / Heat Tint
- (3) Windshield wipers (2) speed with washers 24V/39 1/2" blades
- Windshield cover white Textulene see through (2)
- Custom exterior black Pilothouse mask around pilothouse windows
- Centerline Helm with chart flat and chart drawers
- Wheel 31" teak rim (Edson)
- Port and starboard Pilothouse sliding doors with retractable out screen doors and Amtico entrance flooring
- Helm and companion seats with arm, footrests adjustable with matching Ultra Leather upholstery (Stidd)
- Helm and companion seats with polished stainless steel bases
- Raised built in settee with storage below with Italian Leather upholstery
- Settee (6) person mahogany, satin finished dining table with center expansion leaf and dust

cover

- Built in electric room heater 220V/750W
- Central vac outlet
- Pilothouse carpet (Fabrica)
- Overhead Whisper Wall style headliner with **upgraded** LED down lights
- Overhead built in stereo speakers with volume control
- Windshield defogger system
- Privacy blinds accordion style (Hunter Douglass)
- Side Pilothouse and Salon windows tinted, 3/8" thick

## Pilothouse Electronics

---

- Depth finder digital w/alarm, Simrad with Remote in Master Stateroom
- Knot log, Simrad
- Flat panel displays (3) NEC Multisync 17" mix and match
- CCTV with pan Engine Room (Elbex) EXS 142 - Aft Deck with Pan & Zoom
- Radar Furuno 64 mile with 4' open array scanner
- Chart system/C Map
- Chart System/Nobeltec with wireless keyboard and mouse (Note: Nobeltec Software due for updating)
- Autopilot/Simrad AP25 with plug in handheld remote flybridge
- VHF ICOM IC-M602 with 2 way hailer
- VHF ICON Command Mic for 2nd VHF
- GPS Furuno DGPS GP 37
- Wind speed/direction (Simrad)
- MTU LED engine monitor displays
- Bow thruster & stern thruster control with on/off switch

- Searchlight ACR URP 102
- Manual engine clutch and throttle backup system
- Compass 5" Ritchie magnetic
- Phone Panasonic cell, intercom, Sat, landline
- Chart Plotter / Garmin GPS map 6208 with 8" screen and repeats on 17" Display screen
- Bilge pumps (5) auto/manual with sump pumps and upgraded high water bilge alarm Engine Room, lower helm, crew quarters and swim platform.
- Stabilizers/Naiad Multi Sea II digital control
- Weather center (Oregon Scientific)
- Satellite TV KVH TRAC 4
- Satellite telephone KVH 252
- Ships monitor System
- Chart light with red lens

## Galley (up)

---

- Located just aft of Pilothouse / Headroom 6' 10"
- Refrigerator 22 cu. ft. side by side Kitchen Aid with water and ice dispenser/stainless steel
- Stove (4) burner cook top with oven (GE Profile) stainless steel
- Convection Microwave built in (GE Profile) stainless steel
- Dishwasher (Kitchen Aid) stainless steel
- Trash compactor (Kitchen Aid) stainless steel
- Double deep dish stainless steel sink with disposal and Grohe single lever pullout sprayer style faucet
- Lazy Susan under counter with pull out drawers
- Overhead ventilating hatch with screen and blackout shade
- Granite countertop
- Ample under counter storage and drawer space

- Amtico wood grain flooring
- Buffet with granite top with dish storage and drawers to starboard of galley
- Overhead with **upgraded** LED down lighting

---

## Electrical System

---

- 12V/24V/110V/220V System
- (1) Northern Lights 20 kw 1800 RPM generator with 763 hrs., sound shield & Racor 500 Fuel filter
- PTO for Naiad bow thruster 25 hp hydraulic off of 20 KW Genset
- (1) Northern Lights 16 kw 1800 RPM with 954 hours, sound shield & Racor 500 Fuel filter
- Secondary isolation motor mounts for quietness on gen sets
- Water separating mufflers on gen sets with under water discharge
- 3000 watt Xantrex Prosine inverter with built in charger and breaker panel
- Port and starboard Glendinning cable master's 50 Amp with 75' cords
- Port shore cord with isolation transformer with boost low & high voltage shutoff
- **Upgraded** starboard shore cord with on insolation transformer boost added with (low/high) voltage shutoff
- Batteries Gel Cell with battery switches on main engines & Gensets
- Battery parallel switch
- Battery chargers 24V 40 amp/12V 20 amp
- Stern thruster batteries replaced 10/2014 (4) AGM
- Generator batteries replaced 10/2015 (2) AGM
- Main engine batteries replaced in 2014 / House Batteries (4) AGM replaced 2014
- 24V Breaker panel Engine Room
- 12V Electronic breaker panel Pilothouse
- 24V electric breaker panel Pilothouse with volt and amp meter displays
- 120V/240V/Inverter breaker panels Main Salon

- Inverter panel Main Salon
- Generator remote starts with water temp, volt, oil pressure, hour meters, start/stops / Main Salon
- Cable TV/telephone inlet portside Aft Deck
- 30 Amp inlet starboard side Aft Deck with 50' x 30 amp dock cord
- All breaker panels with backlit labels

## Mechanical/Engine Room

---

- Headroom 5' 8"
- Twin MTU Series 60 825 hp with 750 hours with air seps
- Gear ZF/Model ZF-350A/ratio 2.077.1
- Dual Racor 1000 fuel filters with selector valve and vacuum gauge main engines
- Single Racor 500 fuel filters/gen sets
- Power steering assist pump stbd engine
- Stabilizer pump port engine
- Shafts 2 1/2" with dripless seals and spare seals on shafts
- Props 31" x 37.5" x 5 blade Nibral / **Custom Veem Props** Spare props 30"x 40"x 4 blade federal props Nibral
- Auto/manual fire system Fire Boy FE 241 certification good till May 29th, 2016
- Auto oil change system Reverso 24V mains and gens
- Engine Room air intakes with Delta T demisters and 24V intake blowers
- Stabilizers Naiad model #254 with 4.5' fins / Multi Sea II Digital with lower helm and bridge control
- Fuel tanks aluminum painted with Imron with sight gauges and electric gauges at Lower Helm
- Fuel tanks with crossover valve for easy fueling from port or starboard dock fills
- Fuel polishing system ADS - 180 OBP 24v with Vacuum gauge

- Additional 110V GFI outlet with waterproof cover Engine Room
- Hot and cold freshwater faucet Engine Room
- Rudders with dripless seals
- Watertight door
- Stern thruster / 24v sidepower/ Dual prop with 4 batteries and charger
- Tool box Craftsman (4) drawer w/lock
- Overhead 24V lighting **upgraded** LED 4"x6" flood lights 10/2015
- Watermaker - Sea Recovery 900 GPD with auto freshwater flush, UV filter

### Freshwater System:

- Hot water heater 220V with engine heat exchanger 28 gallons ( torrid quick recovery)
- 10 Gallon accumulating tank
- 285 Gallon 316L Stainless Steel water tank
- Hot water circulating pump
- Dockside water inlet with pressure reducing valve- Location: Aft Deck
- Freshwater wash down Fore Deck and Aft Deck
- Shutoff valves at every outlet
- Freshwater pump 24V Headhunter
- Freshwater pump 24V Headhunter backup
- Hot and cold water shower Aft Deck with pullout sprayer

### Head System:

- Headhunter fresh water jet type heads
- 125 Gallon fiberglass holding tank with tank level indicator monitor lights lower helm
- Deck pump out fitting portside deck
- Crew Quarters electric marine head fresh water (**Independent of headhunter system**)
- Crew Quarters holding tank with overhead discharge pump & dockside pump on deck fitting

- Crew holding tank with tank level indicator monitor lights
- Overboard discharge pump with Y valve

### Air Conditioning System:

- Reverse cycle Technicold system
- 60,000 BTU chilled water system w/Soft Start system on both main & back up systems
- Digital thermostats throughout
- Transom underwater discharge/no hull stain or noises
- **Upgraded** additional backup 60,000 BTU chiller with fresh & seawater pumps, sea cock, sea strainer & separate breaker. **Air Handlers**
- Pilothouse.....32,000 BTU
- Galley.....18,000 BTU
- Salon Forward.....12,000 BTU
- Salon Aft.....12,000 BTU
- Master Stateroom.....16,000 BTU
- VIP Stateroom.....8,000 BTU
- Twin Stateroom.....8,000 BTU
- Crew quarters.....8,000 BTU

## Salon

- Headroom 6' 6"
- Phone Panasonic cell, landline, intercom, satellite
- Comfortable "L" shaped sofa with storage below and decorator pillows
- Table electric HiLo on slide for 6 person dining, camphor and satin finish with dust cover
- Electric room heater 220V 750 watt built in
- (2) Custom chairs with table and lamp
- Large tinted windows at eye level 3/8" thick with privacy shades
- Camphor wood lambrequins
- Sapela mahogany paneling
- Quality Fabrica carpet with, sound absorbing pad under
- Glass aft bulkhead with sliding door, retractable bug screen, privacy curtain (Trend Marine)

- Headliner with **upgraded** LED lighting
- Wet bar Main Salon at forward bulkhead
- Black granite countertop with flush mounted polished stainless steel sink with cold water faucet
- Ice maker "U Line" with matched face panel
- Wine cooler "U Line" 24 bottle with glass face panel
- Accessory drawers
- Liquor and DVD storage
- Crystal and glass cabinets

### Entertainment Center, Main Salon:

- Home theater system
- 42" Samsung plasma HD TV with council drop panel & DSS receiver
- Samsung DVD Blue Ray
- DVD (5 disc, Denon)
- AM FM receiver 120 watts per channel (Denon)
- Surround Sound speaker system with subwoofer
- Universal integrated remote control

## Aft Deck

---

- Overhang with **upgraded** LED down lights
- Teak deck with flush built in storage locker
- Built in seat with removable cushions and cover. Also access to Crew/Engine Room
- Access Flybridge S/S ladder with teak treads
- Aft deck port control station with cover clutch/ throttles / Engine start / stops/ bow & stern thruster controls
- Custom 54" L x 26" W x 30" H teak table with compass rose inlay, cover, satin finished with

polished stainless steel pedestals

- (2) Teak chairs with seat cushions
- Freshwater wash down
- Child/safety gate to swim step with Lexan Inner panel
- (2) 7" Pioneer speakers with volume control
- Overhead CCTV camera facing aft
- Custom hull side fender slide rail port and stbd
- Manual pull for Engine Room fire system
- **Upgraded** tinted Lexan door access to Crew
- Port and starboard cable masters
- Port & starboard 15" stainless steel grab rails
- Aft Deck white Textaline removable sun shade across transom with zipper door

### **Swim Platform, 5'**

- Down (2) steps from Aft Deck
- Steps with deck courtesy lights
- Stainless steel Euro staple rails, removable (3)
- (3) 6" Stainless steel pop up cleats
- Storage below
- Spare prop storage, spare props and blade 30"x40" Nibral / Federal Props
- Stainless rub rail
- Bilge pump with auto float switch, high water bilge alarm
- Fold down stainless steel swim ladder
- Fiberglass nonskid platform

## **Owner/Guest Accommodations**

---

Access from starboard side Pilothouse down circular stairwell w/carpeted stairs, courtesy

lighting, matching mahogany banister

---

## Master Stateroom

---

- Headroom 7' 5"
- Midship full beam
- King size berth with Inner Spring mattress, drawers below, upholstered headboard and indirect lighting
- Nightstands with wall sconce lighting
- Depth finder with alarm
- Phone Panasonic cell, Sat, landline, intercom
- His and Hers cedar lined closets with full length mirrors on closet doors
- (4) Stainless steel opening port lights w/privacy shade
- Port dresser with granite countertops
- Headliner with **upgraded** LED lighting
- Padded silk upholstered bulkheads with mahogany trim, doors and dressers
- Air conditioning ducts with silencer
- Starboard vanity desk with mirror, drawer and chair

## Entertainment Master Stateroom

- 32" Plasma flat screen TV with mahogany frame and DSS receiver AQUOS
- DVD/VHS player JVC
- AM FM digital amplifier JVC
- Central vac outlet
- Digital thermostat
- Wall heater electric 220V/750 watt built in

## Master Head en suite

- Tub with shower and glass sliding door
- Headhunter freshwater head
- Sink with marble countertop and Grohe polished stainless faucet
- Beveled mirror medicine cabinet
- Air conditioning duct
- Exhaust fan
- Stainless steel opening port light with privacy shade
- Black granite flooring
- Under counter storage
- Overhead **upgraded** LED lighting

---

## Twin Berth Port Guest Stateroom

---

- Twin berths with drawers below, upholstered headboard
- Aft bulkhead smoked mirror w/reading lamps
- Nightstand with granite countertop and drawers
- Opening port light with privacy shade
- TV 15" Sharp flat screen remote control with DSS receiver
- AM FM stereo w/CD with speaker JVC
- DVD player Sony
- Built in book/magazine rack
- Digital air conditioning control
- Indirect rope lighting under berths
- Overhead lighting with **upgraded** LED lights
- Cedar lined closet
- Air conditioning duct with silencer
- Privacy door

---

## En suite Head with dual access doubles as Day Head

- Air conditioning duct
- Beveled mirror medicine cabinet
- Opening port light with privacy shade
- Marble countertop with sink and polished stainless Grohe faucets
- Under counter storage
- Headhunter freshwater head
- Large shower
- Black granite flooring
- Exhaust fan
- Overhead **upgraded** LED lighting
- Towel rack

---

## Forward VIP Guest Stateroom

- Centerline queen berth with drawers below, upholstered headboard
- Padded upholstered forward bulkhead with wall sconce lighting
- Port and starboard opening port lights with privacy shades
- Overhead escape/ventilating hatch with screen and blackout shade
- Phone Panasonic, cell, landline, Sat, intercom
- TV 15" Panasonic flat screen TV with mahogany frame & DSS receiver
- DVD player Sony
- CD player and (2) speakers JVC
- Built in magazine/book rack
- Digital air conditioning thermostat
- Air conditioning duct with silencer
- Cedar lined hanging locker

- Overhead with **upgraded** LED lighting
- Privacy door
- Indirect under berth rope lighting

## En Suite Head

- Headhunter freshwater head
- Large stall shower with glass door
- Air conditioning duct
- Exhaust fan
- Overhead **upgraded** LED lighting
- Beveled mirror medicine cabinet
- Marble countertop with sink and polished stainless Grohe faucet, storage below
- Black Granite flooring

## Crew Quarters

---

- Headroom 6' 5"
- Access from seat Aft Deck
- Air conditioning with digital air conditioning control
- 6' 6" (2) Berths with storage below and reading lights
- Freezer 6 cu. ft. G.E
- Phone Panasonic
- Electric room heater built in 220V/750 watt
- T.V. 15' Remote color with DDS receiver
- Storage cabinet
- Opening port light
- Washer and dryer/Bosch Axxis
- Stainless steel stairwell with teak steps and grab rail

- Counter with stainless steel sink with hot and cold faucet and storage below

## Remarks

---

**HI LIFE** is an excellent example of this ever popular 65' Pacific Mariner, being hull #58 of a total of 62 hulls built. This boat incorporated all the latest changes made to this series and many more upgrades done by her present knowledgeable and meticulous owner. Having only 750 original hours, maintained in excellent and well above average condition, I feel there is not a better value in a 60' to 70' pedigree, built in America Pilothouse Motoryacht anywhere. Bring your personals and start cruising. **HI LIFE** will not last and will give her new owners many years of safe and comfortable cruising.

## Exclusions

---

Tools, personal items, Ozone air purifiers in pilothouse and Master stateroom, portable dive compressor, portable freezer on Flybridge - A detailed list will be provided at time of sale

## Exclusions

---

Owner's personal belongings.

## Disclaimer

---

The Company offers the details of this vessel or yacht in good faith but cannot guarantee or warrant the accuracy of this information nor warrant the condition of the vessel. A buyer should instruct his representatives, agents, or his surveyors, to investigate such details as the buyer desires validated. This vessel or yacht is offered subject to prior sale, price change, or withdrawal without notice.

# PHOTOS

**Bow**



**Bow**



**Side decks / Catwalk**

**Wing Station**



**Flybridge helm**



**Flybridge Chairs**



**Flybridge Settee**



**Grill**



**Flybridge**



**Tender**



**Pilothouse Helm**



**Pilothouse Helm**



**Pilothouse**



**Pilothouse Settee**



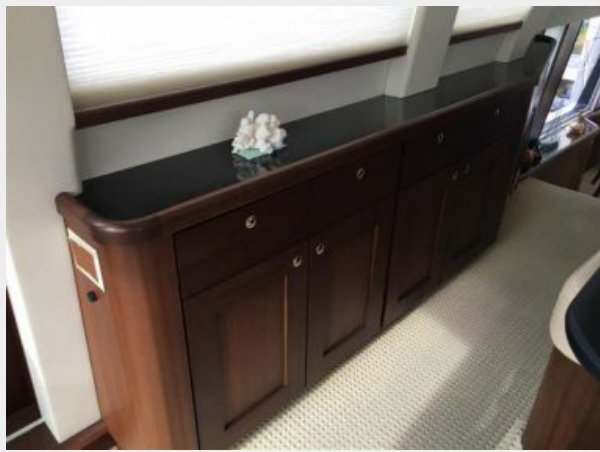
**Galley**



**Galley2**



**Starboard pilothouse**



**Salon**



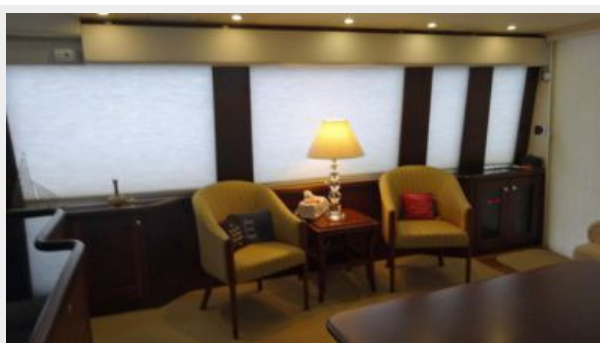
**Salon TV**



**Salon**



**Salon**



**Aft Deck**



**Aft Deck**



**Aft Deck**



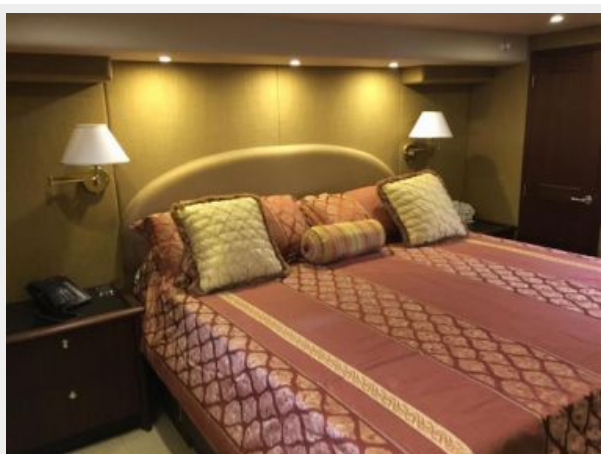
**Aft Deck control station**



**Stateroom companion way**



**Master Stateroom**



**Master TV**



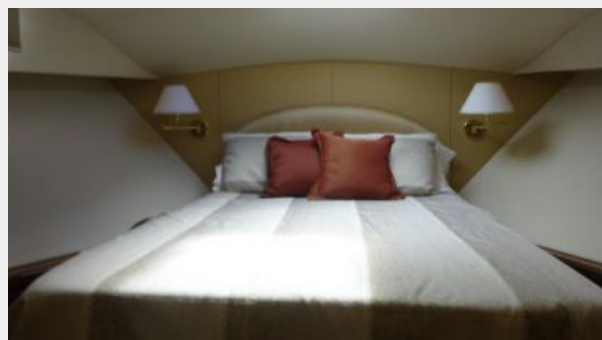
**Master stateroom desk**



**Master stateroom Bath**



**VIP stateroom**



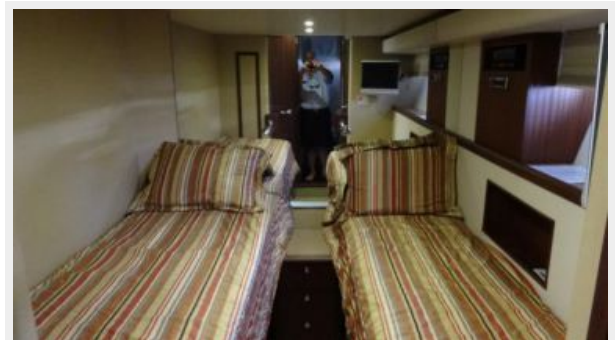
**VIP stateroom TV**



**VIP head**



**Twin Stateroom**



**Twin Stateroom / Ensuite Head**



**Engines**



**Engine Room**



**Engine Room**



**Crew Berths**



**Crew TV**



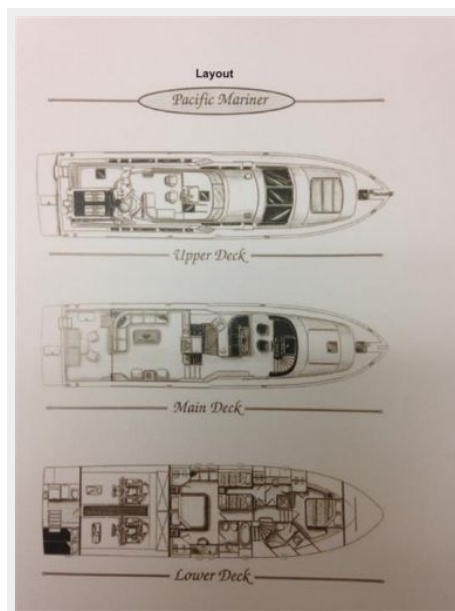
## Crew



## Swim Platform



## Layout



# CONTACTS

---

Andrey Shestakov, leading yacht broker of the sales department of Shestakov Yacht Sales Inc. Shestakov Yacht Sales Inc., the official representative of the Miami/Fort Lauderdale FL headquarters.

## Contact details

---

Email: **andrey@shestakovyachtsales.com**

Web: [shestakovyachtsales.com/en/](http://shestakovyachtsales.com/en/)

## Telephones

---

USA: **+1(954)274-4435**

## Office hours

---

Monday – Saturday: **9:00 - 21:00 EDT**

Sunday: **closed**

## Address

---



Harbour Towne Marina, 850 NE 3rd St,  
STE 213, Dania, FL 33004