

HI LIFE — PACIFIC MARINER



Судостроитель: PACIFIC MARINER

Год постройки: 2007

Модель: Моторная яхта

Цена: **ЦЕНА ЯХТЫ ПО ЗАПРОСУ**

Местонахождение: United States

Длина общая: 65' 0" (19.81m)

Ширина: 17' 4" (5.28m)

Мин. осадка: 5' 0" (1.52m)

Крейс. скорость: 21 Kts. (24 MPH)

Макс. скорость: 25 Kts. (29 MPH)

Купить **HI LIFE — PACIFIC MARINER** а также выбрать подходящую вам яхту из нашего каталога яхт вам поможет опытный яхтенный брокер Андрей Шестаков. На сегодняшний день компания **Shestakov Yacht Sales Inc.** имеет большое количество яхт в собственном списке продаж, а также тесно сотрудничает со всеми крупными яхтенными производителями по всему миру.

Для того чтобы купить яхту **HI LIFE — PACIFIC MARINER** а также проконсультироваться по любому вопросу связанному с покупкой, продажей, чартером яхт позвоните по телефону **+7(918)465-66-44**.

ОГЛАВЛЕНИЕ

ОГЛАВЛЕНИЕ	2
ХАРАКТЕРИСТИКИ	5
Обзор	5
Основная информация	5
Размеры	5
Скорость, вместимость и масса	5
Размещение	6
Корпус и палуба	6
Информация о двигателе	6
ПОДРОБНОЕ ОПИСАНИЕ	7
Vessel Walkthrough	7
Fore Deck/Side Decks	7
Flybridge	8
Flybridge Electronics	9
Tender	9
Pilothouse	10
Pilothouse Electronics	11
Galley (up)	12
Electrical System	13
Mechanical/Engine Room	14
Salon	16
Aft Deck	17
Owner/Guest Accommodations	18
Master Stateroom	19
Twin Berth Port Guest Stateroom	20
Forward VIP Guest Stateroom	21
Crew Quarters	22
Remarks	23

Exclusions	23
Исключения	23
Отказ от ответственности	23
ФОТОГРАФИИ	24
Bow	24
Bow	24
Side decks / Catwalk	24
Wing Station	24
Flybridge helm	25
Flybridge Chairs	25
Flybridge Settee	25
Grill	25
Flybridge	25
Tender	25
Pilothouse Helm	26
Pilothouse Helm	26
Pilothouse	26
Pilothouse Settee	26
Galley	26
Galley2	26
Starboard pilothouse	27
Salon	27
Salon TV	27
Salon	27
Salon	27
Aft Deck	27
Aft Deck	28
Aft Deck	28
Stateroom companion way	28

Aft Deck control station	28
Master Stateroom	28
Master TV	28
Master stateroom Bath	29
Master stateroom desk	29
VIP stateroom	29
VIP stateroom TV	29
VIP head	29
Twin Stateroom	29
Twin Stateroom / Ensuite Head	30
Engines	30
Engine Room	30
Engine Room	30
Crew Berths	30
Crew TV	30
Crew	31
Swim Platform	31
Layout	31
КОНТАКТЫ	32
Контактная информация	32
Телефоны	32
Время работы	32
Адрес	32

ХАРАКТЕРИСТИКИ

Обзор

~**DEAL PENDING**~ This boat incorporated all the latest changes made to this series and many more upgrades done by her present knowledgeable and meticulous owner. Having only 750 original hours, maintained in new boat condition and aggressively priced, I feel there is not a better value in a 60' to 70' Pilothouse Motoryacht anywhere.

Основная информация

Тип судна: Моторная яхта

Подкатегория: Pilothouse

Модельный год: 2007

Год постройки: 2007

Страна: United States

Верх: Hardtop

Открытая палуба мостика: Да

Размеры

Длина общая: 65' 0" (19.81m)

Ширина: 17' 4" (5.28m)

Мин. осадка: 5' 0" (1.52m)

Скорость, вместимость и масса

Крейс. скорость: 21 Kts. (24 MPH)

Дальность на крейсерской скорости:
900

Макс. скорость: 25 Kts. (29 MPH)

Водоизмещение: 69000 Pounds

Чистый вес: 40 Pounds

Вместимость воды: 285 Gallons

Вместимость сточного бака: 125 Gallons **Объем топливного бака:** 1100 Gallons

Размещение

Всего кают: 3

Спальные места: 6

Всего ком. состава: 3

Каюты экипажа: 1

Койки экипажа: 2

Корпус и палуба

Материал корпуса: Fiberglass

Материал палубы: Teak

Комплектация корпуса: Modified V-Hull

Отделка корпуса: Plastic

Дизайнер корпуса: William Garden

Дизайнер экстерьера: Greg Marshall

Дизайнер интерьера: Pacific Mariner
Design team

Информация о двигателе

Двигатели: 2

Производитель: MTU

Модель: Series 60

Тип двигателя: Inboard

Тип топлива: Diesel

ПОДРОБНОЕ ОПИСАНИЕ

Vessel Walkthrough

~**DEAL PENDING**~ Access through port and starboard Pilothouse sliding doors or Aft Deck into Salon, forward to up Galley/Pilothouse. Forward and down circular stairwell to Owner's/Guest Accommodations. Forward VIP Stateroom with centerline queen berth and en suite Head, aft to portside Twin Berth Stateroom with en suite Head which doubles as Day Head. Aft to large full beam Master Stateroom with centerline king berth, en suite Head. Fly bridge with hardtop. Aft Deck with built in seating, dining table, and access ladder to fly bridge/ boat deck. Also access to Crew Quarters and walk in Engine Room.

Fore Deck/Side Decks

- Windlass/Lewmar 24V 3000 lbs. with chain wildcat
- Anchor 75 lb. CQR Plow style with 300' x 3/8" high tensile chain
- Stainless steel anchor mount with roller and safety pin
- Stainless steel 16" burgee staff
- Fiberglass non skid deck
- Storage locker with 26" x 26" Bomar hatch with fresh and seawater wash downs
- (2) 12" Stainless steel cleats with chafe guards
- Bow/Side deck rail with center lifeline port and starboard boarding gates
- Trunk cabin with recessed sun pad with cushions and dual grab rails
- VIP Stateroom opening escape hatch 28" x 28" Bomar
- Side decks with 1/4 + 3/4 cleats 12" stainless steel with chafe guards
- Cabin side safety grab rail
- Starboard side flip out wing control with clutch and throttles, start/stops, bow and stern thruster controls
- Fuel and water deck fills port starboard side
- Holding tank pump out deck fitting portside
- Walk around catwalks 12" w/safety rails

- Aft port and starboard docking windlasses (Lewmar) stainless steel with foot controls

Flybridge

- Fiberglass hardtop with fiberglass arch and **upgraded** LED down lights.
- Tinted tempered glass windshield with 24" wiper with 2 speeds and washer
- Centerline Helm Station with cover, 24" stainless steel Destroyer style wheel and carbon fiber back plate
- Helm companion seat with arm and footrest and covers (Stidd)
- Portside cabinet with Norcold 24V refrigerator and drop leaf
- Additional 110V GFI outlet with waterproof cover
- Stainless steel life ring holder with life ring Type IV PDF with retrieve line.
- Access to Bridge w/Lexan sliding hatch and opening hinged door with lock
- (2) Built in drink holders Helm Console
- Starboard side "L" settee with cushions, storage below and cover
- Cocktail/dining table (4) person Corian 31" H with stainless steel base
- Flybridge /Boat Deck non skid fiberglass
- Electric Grill 16"x 10" Force with lid
- Davit (Nautical Structures) 24V hydraulic with power rotation and boom 1500 lbs
- Tender chocks with cable style tie downs for tender
- Boarding ladder Verticle (3) Step powder Coated white
- Custom boarding ladder stowage mounts
- (3) side bridge enclosure / EZ2CY (Excellent Condition)
- (5) U Zips on Bridge Enclosure
- Fore and aft deck drains
- Life raft/ Winslow (6) man canister
- Aft Deck to Boat Deck access hatch 28" x 28" with Lexan insert (Bomar)

Flybridge Electronics

- Depth finder digital w/alarm, Simrad with cover
- Knot meter, Simrad with cover
- Furuno Nav Net with 10" monitor chart plotter, radar, CCTV, depth graph with cover with C MAP
- CCTV - Cameras in Engine room and Aft Deck
- Compass Ritchie 3 1/2" magnetic
- Autopilot Simrad AP 26 plug in remote w/ 15' cable
- Rudder angle indicator, Simrad R135 w/cover
- Searchlight ACR URP-102 with cover
- VHF ICOM IC M422 with Icon command Mic for 2nd VHF
- Remote stabilizer control multi sea / digital
- Bow thruster control hydraulic w/on/off switch
- Stern Thruster Control / Electric Side power 24 v
- Horns Kahlenberg dual trumpet with compressor 24 v
- Main engine start and stops
- Clutch and throttles electronic MTU with synchronizer & low idle features
- Engine monitor display MTU digital w/covers
- Deck courtesy lights (5) LED 24V

Tender

- 12' 2008 Carib Deluxe Hard bottom inflatable with cover
- Yamaha 40 HP (4) Stroke Electric Start with Trim Fin, cover, motor with power trim and tilt
- Center Console with tinted windshield and stainless grab rail
- Yamaha speedometer & tachometer

- Navigation lights
- Bilge pump Auto / Manual
- Pontoon inflation air pump
- Fire Extinguisher (1) hand held
- Fuel / Water separator filter Yamaha / Spin on Style
- Paddle (1)
- Courtesy deck light 12v
- Fresh water shower with 12 v pump
- (2) throw cushions
- Battery 12v with Battery switch
- Bow cleat 4.5 stainless pop up

Pilothouse

- Headroom 6' 7"
- Forward Pilothouse windows 1/2" thick with "V" cool UV / Heat Tint
- (3) Windshield wipers (2) speed with washers 24V/39 1/2" blades
- Windshield cover white Textulene see through (2)
- Custom exterior black Pilothouse mask around pilothouse windows
- Centerline Helm with chart flat and chart drawers
- Wheel 31" teak rim (Edson)
- Port and starboard Pilothouse sliding doors with retractable out screen doors and Amtico entrance flooring
- Helm and companion seats with arm, footrests adjustable with matching Ultra Leather upholstery (Stidd)
- Helm and companion seats with polished stainless steel bases
- Raised built in settee with storage below with Italian Leather upholstery
- Settee (6) person mahogany, satin finished dining table with center expansion leaf and dust

cover

- Built in electric room heater 220V/750W
- Central vac outlet
- Pilothouse carpet (Fabrica)
- Overhead Whisper Wall style headliner with **upgraded** LED down lights
- Overhead built in stereo speakers with volume control
- Windshield defogger system
- Privacy blinds accordion style (Hunter Douglass)
- Side Pilothouse and Salon windows tinted, 3/8" thick

Pilothouse Electronics

- Depth finder digital w/alarm, Simrad with Remote in Master Stateroom
- Knot log, Simrad
- Flat panel displays (3) NEC Multisync 17" mix and match
- CCTV with pan Engine Room (Elbex) EXS 142 - Aft Deck with Pan & Zoom
- Radar Furuno 64 mile with 4' open array scanner
- Chart system/C Map
- Chart System/Nobeltec with wireless keyboard and mouse (Note: Nobeltec Software due for updating)
- Autopilot/Simrad AP25 with plug in handheld remote flybridge
- VHF ICOM IC-M602 with 2 way hailer
- VHF ICON Command Mic for 2nd VHF
- GPS Furuno DGPS GP 37
- Wind speed/direction (Simrad)
- MTU LED engine monitor displays
- Bow thruster & stern thruster control with on/off switch

- Searchlight ACR URP 102
- Manual engine clutch and throttle backup system
- Compass 5" Ritchie magnetic
- Phone Panasonic cell, intercom, Sat, landline
- Chart Plotter / Garmin GPS map 6208 with 8" screen and repeats on 17" Display screen
- Bilge pumps (5) auto/manual with sump pumps and upgraded high water bilge alarm Engine Room, lower helm, crew quarters and swim platform.
- Stabilizers/Naiad Multi Sea II digital control
- Weather center (Oregon Scientific)
- Satellite TV KVH TRAC 4
- Satellite telephone KVH 252
- Ships monitor System
- Chart light with red lens

Galley (up)

- Located just aft of Pilothouse / Headroom 6' 10"
- Refrigerator 22 cu. ft. side by side Kitchen Aid with water and ice dispenser/stainless steel
- Stove (4) burner cook top with oven (GE Profile) stainless steel
- Convection Microwave built in (GE Profile) stainless steel
- Dishwasher (Kitchen Aid) stainless steel
- Trash compactor (Kitchen Aid) stainless steel
- Double deep dish stainless steel sink with disposal and Grohe single lever pullout sprayer style faucet
- Lazy Susan under counter with pull out drawers
- Overhead ventilating hatch with screen and blackout shade
- Granite countertop
- Ample under counter storage and drawer space

- Amtico wood grain flooring
- Buffet with granite top with dish storage and drawers to starboard of galley
- Overhead with **upgraded** LED down lighting

Electrical System

- 12V/24V/110V/220V System
- (1) Northern Lights 20 kw 1800 RPM generator with 763 hrs., sound shield & Racor 500 Fuel filter
- PTO for Naiad bow thruster 25 hp hydraulic off of 20 KW Genset
- (1) Northern Lights 16 kw 1800 RPM with 954 hours, sound shield & Racor 500 Fuel filter
- Secondary isolation motor mounts for quietness on gen sets
- Water separating mufflers on gen sets with under water discharge
- 3000 watt Xantrex Prosine inverter with built in charger and breaker panel
- Port and starboard Glendinning cable master's 50 Amp with 75' cords
- Port shore cord with isolation transformer with boost low & high voltage shutoff
- **Upgraded** starboard shore cord with on insolation transformer boost added with (low/high) voltage shutoff
- Batteries Gel Cell with battery switches on main engines & Gensets
- Battery parallel switch
- Battery chargers 24V 40 amp/12V 20 amp
- Stern thruster batteries replaced 10/2014 (4) AGM
- Generator batteries replaced 10/2015 (2) AGM
- Main engine batteries replaced in 2014 / House Batteries (4) AGM replaced 2014
- 24V Breaker panel Engine Room
- 12V Electronic breaker panel Pilothouse
- 24V electric breaker panel Pilothouse with volt and amp meter displays
- 120V/240V/Inverter breaker panels Main Salon

- Inverter panel Main Salon
- Generator remote starts with water temp, volt, oil pressure, hour meters, start/stops / Main Salon
- Cable TV/telephone inlet portside Aft Deck
- 30 Amp inlet starboard side Aft Deck with 50' x 30 amp dock cord
- All breaker panels with backlit labels

Mechanical/Engine Room

- Headroom 5' 8"
- Twin MTU Series 60 825 hp with 750 hours with air seps
- Gear ZF/Model ZF-350A/ratio 2.077.1
- Dual Racor 1000 fuel filters with selector valve and vacuum gauge main engines
- Single Racor 500 fuel filters/gen sets
- Power steering assist pump stbd engine
- Stabilizer pump port engine
- Shafts 2 1/2" with dripless seals and spare seals on shafts
- Props 31" x 37.5" x 5 blade Nibral / **Custom Veem Props** Spare props 30"x 40"x 4 blade federal props Nibral
- Auto/manual fire system Fire Boy FE 241 certification good till May 29th, 2016
- Auto oil change system Reverso 24V mains and gens
- Engine Room air intakes with Delta T demisters and 24V intake blowers
- Stabilizers Naiad model #254 with 4.5' fins / Multi Sea II Digital with lower helm and bridge control
- Fuel tanks aluminum painted with Imron with sight gauges and electric gauges at Lower Helm
- Fuel tanks with crossover valve for easy fueling from port or starboard dock fills
- Fuel polishing system ADS - 180 OBP 24v with Vacuum gauge

- Additional 110V GFI outlet with waterproof cover Engine Room
- Hot and cold freshwater faucet Engine Room
- Rudders with dripless seals
- Watertight door
- Stern thruster / 24v sidepower/ Dual prop with 4 batteries and charger
- Tool box Craftsman (4) drawer w/lock
- Overhead 24V lighting **upgraded** LED 4"x6" flood lights 10/2015
- Watermaker - Sea Recovery 900 GPD with auto freshwater flush, UV filter

Freshwater System:

- Hot water heater 220V with engine heat exchanger 28 gallons (torrid quick recovery)
- 10 Gallon accumulating tank
- 285 Gallon 316L Stainless Steel water tank
- Hot water circulating pump
- Dockside water inlet with pressure reducing valve- Location: Aft Deck
- Freshwater wash down Fore Deck and Aft Deck
- Shutoff valves at every outlet
- Freshwater pump 24V Headhunter
- Freshwater pump 24V Headhunter backup
- Hot and cold water shower Aft Deck with pullout sprayer

Head System:

- Headhunter fresh water jet type heads
- 125 Gallon fiberglass holding tank with tank level indicator monitor lights lower helm
- Deck pump out fitting portside deck
- Crew Quarters electric marine head fresh water (**Independent of headhunter system**)
- Crew Quarters holding tank with overhead discharge pump & dockside pump on deck fitting

- Crew holding tank with tank level indicator monitor lights
- Overboard discharge pump with Y valve

Air Conditioning System:

- Reverse cycle Technicold system
- 60,000 BTU chilled water system w/Soft Start system on both main & back up systems
- Digital thermostats throughout
- Transom underwater discharge/no hull stain or noises
- **Upgraded** additional backup 60,000 BTU chiller with fresh & seawater pumps, sea cock, sea strainer & separate breaker. **Air Handlers**
- Pilothouse.....32,000 BTU
- Galley.....18,000 BTU
- Salon Forward.....12,000 BTU
- Salon Aft.....12,000 BTU
- Master Stateroom.....16,000 BTU
- VIP Stateroom.....8,000 BTU
- Twin Stateroom.....8,000 BTU
- Crew quarters.....8,000 BTU

Salon

- Headroom 6' 6"
- Phone Panasonic cell, landline, intercom, satellite
- Comfortable "L" shaped sofa with storage below and decorator pillows
- Table electric HiLo on slide for 6 person dining, camphor and satin finish with dust cover
- Electric room heater 220V 750 watt built in
- (2) Custom chairs with table and lamp
- Large tinted windows at eye level 3/8" thick with privacy shades
- Camphor wood lambrequins
- Sapela mahogany paneling
- Quality Fabrica carpet with, sound absorbing pad under
- Glass aft bulkhead with sliding door, retractable bug screen, privacy curtain (Trend Marine)

- Headliner with **upgraded** LED lighting
- Wet bar Main Salon at forward bulkhead
- Black granite countertop with flush mounted polished stainless steel sink with cold water faucet
- Icemaker "U Line" with matched face panel
- Wine cooler "U Line" 24 bottle with glass face panel
- Accessory drawers
- Liquor and DVD storage
- Crystal and glass cabinets

Entertainment Center, Main Salon:

- Home theater system
- 42" Samsung plasma HD TV with council drop panel & DSS receiver
- Samsung DVD Blue Ray
- DVD (5 disc, Denon)
- AM FM receiver 120 watts per channel (Denon)
- Surround Sound speaker system with subwoofer
- Universal integrated remote control

Aft Deck

- Overhang with **upgraded** LED down lights
- Teak deck with flush built in storage locker
- Built in seat with removable cushions and cover. Also access to Crew/Engine Room
- Access Flybridge S/S ladder with teak treads
- Aft deck port control station with cover clutch/ throttles / Engine start / stops/ bow & stern thruster controls
- Custom 54" L x 26" W x 30" H teak table with compass rose inlay, cover, satin finished with

polished stainless steel pedestals

- (2) Teak chairs with seat cushions
- Freshwater wash down
- Child/safety gate to swim step with Lexan Inner panel
- (2) 7" Pioneer speakers with volume control
- Overhead CCTV camera facing aft
- Custom hull side fender slide rail port and stbd
- Manual pull for Engine Room fire system
- **Upgraded** tinted Lexan door access to Crew
- Port and starboard cable masters
- Port & starboard 15" stainless steel grab rails
- Aft Deck white Textaline removable sun shade across transom with zipper door

Swim Platform, 5'

- Down (2) steps from Aft Deck
- Steps with deck courtesy lights
- Stainless steel Euro staple rails, removable (3)
- (3) 6" Stainless steel pop up cleats
- Storage below
- Spare prop storage, spare props and blade 30"x40" Nibral / Federal Props
- Stainless rub rail
- Bilge pump with auto float switch, high water bilge alarm
- Fold down stainless steel swim ladder
- Fiberglass nonskid platform

Owner/Guest Accommodations

Access from starboard side Pilothouse down circular stairwell w/carpeted stairs, courtesy

lighting, matching mahogany banister

Master Stateroom

- Headroom 7' 5"
- Midship full beam
- King size berth with Inner Spring mattress, drawers below, upholstered headboard and indirect lighting
- Nightstands with wall sconce lighting
- Depth finder with alarm
- Phone Panasonic cell, Sat, landline, intercom
- His and Hers cedar lined closets with full length mirrors on closet doors
- (4) Stainless steel opening port lights w/privacy shade
- Port dresser with granite countertops
- Headliner with **upgraded** LED lighting
- Padded silk upholstered bulkheads with mahogany trim, doors and dressers
- Air conditioning ducts with silencer
- Starboard vanity desk with mirror, drawer and chair

Entertainment Master Stateroom

- 32" Plasma flat screen TV with mahogany frame and DSS receiver AQUOS
- DVD/VHS player JVC
- AM FM digital amplifier JVC
- Central vac outlet
- Digital thermostat
- Wall heater electric 220V/750 watt built in

Master Head en suite

- Tub with shower and glass sliding door
- Headhunter freshwater head
- Sink with marble countertop and Grohe polished stainless faucet
- Beveled mirror medicine cabinet
- Air conditioning duct
- Exhaust fan
- Stainless steel opening port light with privacy shade
- Black granite flooring
- Under counter storage
- Overhead **upgraded** LED lighting

Twin Berth Port Guest Stateroom

- Twin berths with drawers below, upholstered headboard
- Aft bulkhead smoked mirror w/reading lamps
- Nightstand with granite countertop and drawers
- Opening port light with privacy shade
- TV 15" Sharp flat screen remote control with DSS receiver
- AM FM stereo w/CD with speaker JVC
- DVD player Sony
- Built in book/magazine rack
- Digital air conditioning control
- Indirect rope lighting under berths
- Overhead lighting with **upgraded** LED lights
- Cedar lined closet
- Air conditioning duct with silencer
- Privacy door

En suite Head with dual access doubles as Day Head

- Air conditioning duct
- Beveled mirror medicine cabinet
- Opening port light with privacy shade
- Marble countertop with sink and polished stainless Grohe faucets
- Under counter storage
- Headhunter freshwater head
- Large shower
- Black granite flooring
- Exhaust fan
- Overhead **upgraded** LED lighting
- Towel rack

Forward VIP Guest Stateroom

- Centerline queen berth with drawers below, upholstered headboard
- Padded upholstered forward bulkhead with wall sconce lighting
- Port and starboard opening port lights with privacy shades
- Overhead escape/ventilating hatch with screen and blackout shade
- Phone Panasonic, cell, landline, Sat, intercom
- TV 15" Panasonic flat screen TV with mahogany frame & DSS receiver
- DVD player Sony
- CD player and (2) speakers JVC
- Built in magazine/book rack
- Digital air conditioning thermostat
- Air conditioning duct with silencer
- Cedar lined hanging locker

- Overhead with **upgraded** LED lighting
- Privacy door
- Indirect under berth rope lighting

En Suite Head

- Headhunter freshwater head
- Large stall shower with glass door
- Air conditioning duct
- Exhaust fan
- Overhead **upgraded** LED lighting
- Beveled mirror medicine cabinet
- Marble countertop with sink and polished stainless Grohe faucet, storage below
- Black Granite flooring

Crew Quarters

- Headroom 6' 5"
- Access from seat Aft Deck
- Air conditioning with digital air conditioning control
- 6' 6" (2) Berths with storage below and reading lights
- Freezer 6 cu. ft. G.E
- Phone Panasonic
- Electric room heater built in 220V/750 watt
- T.V. 15' Remote color with DDS receiver
- Storage cabinet
- Opening port light
- Washer and dryer/Bosch Axxis
- Stainless steel stairwell with teak steps and grab rail

- Counter with stainless steel sink with hot and cold faucet and storage below

Remarks

HI LIFE is an excellent example of this ever popular 65' Pacific Mariner, being hull #58 of a total of 62 hulls built. This boat incorporated all the latest changes made to this series and many more upgrades done by her present knowledgeable and meticulous owner. Having only 750 original hours, maintained in excellent and well above average condition, I feel there is not a better value in a 60' to 70' pedigree, built in America Pilothouse Motoryacht anywhere. Bring your personals and start cruising. **HI LIFE** will not last and will give her new owners many years of safe and comfortable cruising.

Exclusions

Tools, personal items, Ozone air purifiers in pilothouse and Master stateroom, portable dive compressor, portable freezer on Flybridge - A detailed list will be provided at time of sale

Исключения

При продаже яхты исключаются личные вещи владельца.

Отказ от ответственности

Компания предоставляет описание судна или яхты добросовестно, но не может гарантировать точность этой информации, а также не ручается за техническое состояние. Покупатель должен проинструктировать своих агентов или оценщиков исследовать представленную информацию более подробно, по собственному желанию. Продажа судна или яхты, изменение цены или снятие с продажи будет происходить без предварительного уведомления.

ФОТОГРАФИИ

Bow



Bow



Wing Station



Side decks / Catwalk



Flybridge helm



Flybridge Chairs



Flybridge Settee



Grill



Flybridge



Tender



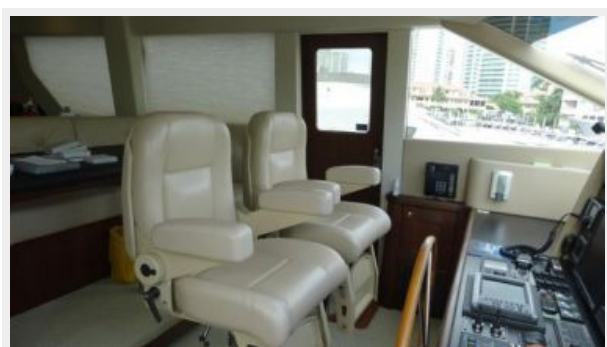
Pilothouse Helm



Pilothouse Helm



Pilothouse



Pilothouse Settee



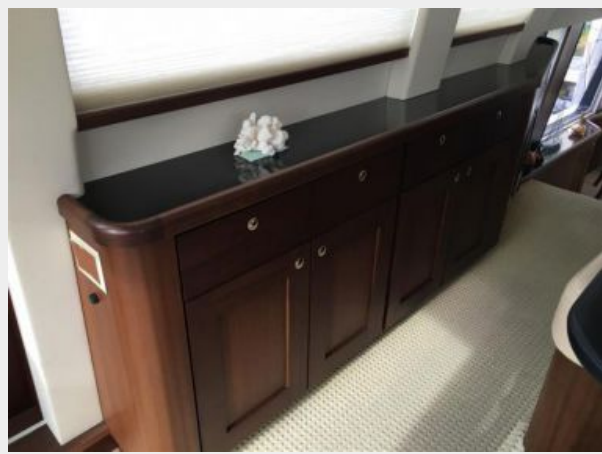
Galley



Galley2



Starboard pilothouse



Salon



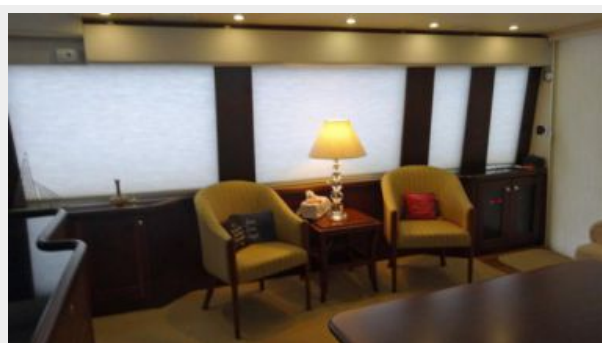
Salon TV



Salon



Salon



Aft Deck



Aft Deck



Aft Deck



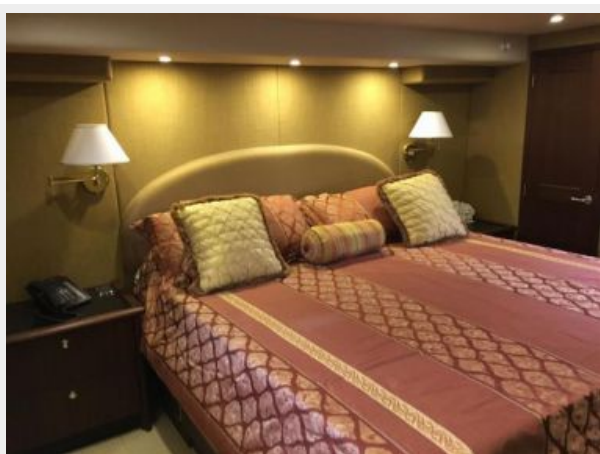
Aft Deck control station



Stateroom companion way



Master Stateroom



Master TV



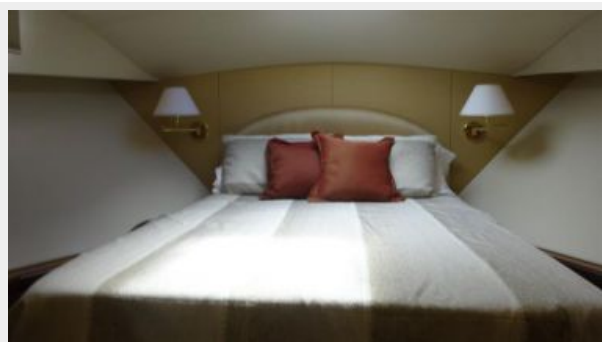
Master stateroom desk



Master stateroom Bath



VIP stateroom



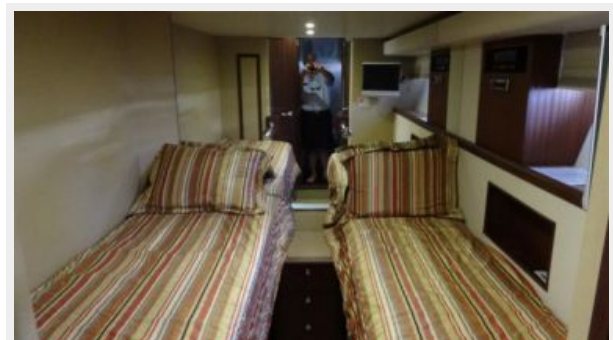
VIP stateroom TV



VIP head



Twin Stateroom



Twin Stateroom / Ensuite Head



Engines



Engine Room



Engine Room



Crew Berths



Crew TV



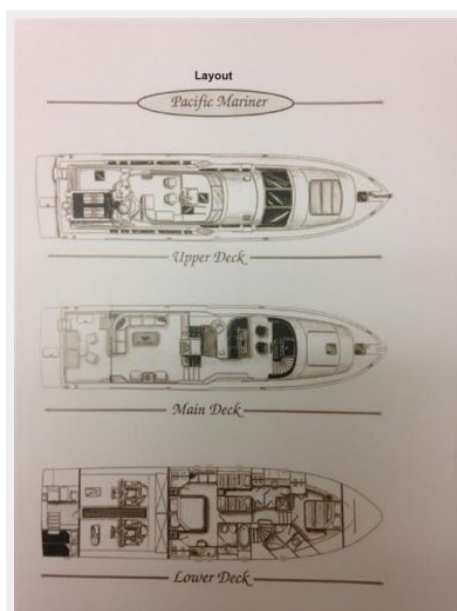
Crew



Swim Platform



Layout



КОНТАКТЫ

Андрей Шестаков (Andrey Shestakov) – ведущий яхтенный брокер отдела продаж яхт и судов компании Shestakov Yacht Sales Inc. Официальный представитель Shestakov Yacht Sales Inc. для русскоговорящих клиентов в центральном офисе компании в Майами/Форт Лодердейл/Флорида/США.

Контактная информация

Email: andrey@shestakovyachtsales.com

Web: shestakovyachtsales.com

Телефоны

Краснодарский край: **+7(918)465-66-44**

США, Майами, Флорида: **+1(954)274-4435**

Время работы

Понедельник – Суббота: **9:00 - 21:00**
EDT

Воскресенье: **Закрито**

Адрес



Harbour Towne Marina, 850 NE 3rd St,
STE 213, Dania, FL 33004