

RANDM — SILVERTON



Builder: SILVERTON

Year Built: 2001

Model: Sport Fisherman

Price: PRICE ON APPLICATION

Location: United States

LOA: 42' 0" (12.80m)

Beam: 14' 11" (4.52m)

Min Draft: 3' 8" (1.09m)

Cruise Speed: 20 Kts. (23 MPH)

Max Speed: 24 Kts. (28 MPH)

Our experienced yacht broker, Andrey Shestakov, will help you choose and buy a yacht that best suits your needs **RANDM — SILVERTON** from our catalogue. Presently, at Shestakov Yacht Sales Inc., we have a wide variety of yachts available on our sale's list. We also work in close contact with all the big yacht manufacturers from all over the world.

If you would like to buy a yacht **RANDM — SILVERTON** or would like help answering any questions concerning purchasing, selling or chartering a yacht, please call **+1(954)274-4435**

TABLE OF CONTENTS

TABLE OF CONTENTS	2
SPECIFICATIONS	4
Basic Information	4
Dimensions	4
Speed, Capacities and Weight	4
Accommodations	4
Hull and Deck Information	4
Engine Information	5
DETAILED INFORMATION	6
Accommodations	6
Cockpit	6
Deck Equipment	6
Electrical System	7
Electronics	7
Engine Room	7
Exclusions	7
Galley	7
Salon	8
Exclusions	8
Disclaimer	8
PHOTOS	9
Transom View	9
Helm	9
CONTACTS	14
Contact details	14
Telephones	14
Office hours	14
Address	14

SPECIFICATIONS

Basic Information

Category: Sport Fisherman

Sub Category: Convertible

Model Year: 2001

Year Built: 2001

Country: United States

Dimensions

LOA: 42' 0" (12.80m)

Beam: 14' 11" (4.52m)

Min Draft: 3' 8" (1.09m)

MFG Length: 42' 0" (12.80m)

Speed, Capacities and Weight

Cruise Speed: 20 Kts. (23 MPH)

Max Speed: 24 Kts. (28 MPH)

Displacement: 26300 Pounds

Water Capacity: 200 Gallons

Holding Tank: 40 Gallons

Fuel Capacity: 524 Gallons

Accommodations

Total Cabins: 2

Hull and Deck Information

Hull Material: Fiberglass

Deck Material: Fiberglass

Hull Color: White

Engine Information

Engines: 2

Manufacturer: Caterpillar

Model: 3126B

Engine Type: Inboard

Fuel Type: Diesel

DETAILED INFORMATION

Accommodations

Stylish family convertible with wide 14'10" beam is sporty on the outside, comfortable on the inside. Classy galley-down interior incorporates unique raised dinette forward in salon, two double staterooms, home-sized galley with generous storage. Note split head/shower arrangement, overhead rod locker in salon. Uncluttered cockpit has engine room access door, tackle center, molded bridge steps, transom door.

New Wood Floors in Both Staterooms
1/2009

Entertainment center at aft port corner of main
salon

Cockpit

Transom Door 6 ea. Rod Holders
Cockpit Bolsters (NEW) Tackle
Center

Freshwater Sink In-deck Fishbox w/macerator Aquatek Hot
& Cold Transom Shower Freshwater/Saltwater Washdown

Deck Equipment

Fiberglass Hardtop on Flybridge Stataglass
Enclosure in 2006 Flybridge Seating for Eight
with Storage Below Flybridge Instrument
Cover Molded-In Stairs to Flybridge Cockpit
Access to Engine Compartment Cockpit
Storage Lockers Fiberglass Swim Platform
with Ladder Hand-Held Transom Shower
Transom Gate to Access Swim Platform
Molded-In Diamond Non-Skid on Decks
AM/FM Stereo System on Flybridge Stainless
Steel Fender Racks Fresh and Salt Water
Washdown Systems 6 Rod Holders at Aft
Flybridge Rail Bottom Painted 9/2009
Simpson Anchor Windlass w/Helm and Bow
Foot Switches

3 Cameras (Engine room, Salon & Aft facing in
Cockpit) Custom Extended Swim Platform Bow
Pulpit and Anchor Locker Simpson-Lawrence
Sprint 7000 Anchor Windlass with 600' Anchor
Line Remote Control for Windlass on Flybridge
Fresh Water Anchor Washdown Stainless Steel
Bow and Life Rails Stainless Steel Mooring and
Springline Cleats Dockside Water Connection
Cockpit Coaming Pads Spreader Lights on
Hardtop Guest Remote Searchlight on Pulpit
Pedestal Helm and Companion Seats Fish Box
in Cockpit Sole Cockpit Sink with Tackle Center
6 Rod Holders in Cockpit Covering Board
Stainless Steel Dual Trumpet Horn

Electrical System

Kohler 8 Kw Generator with 700 hours	110 volt AC and 12 volt DC Systems
Generator Sound Shield	Circuit Breaker Panel in Main Salon
Telephone/Cable TV Inlet	CableMaster 50 amp Shore
12 volt Outlet on Flybridge	Power Cord 40 amp ProTech 4 Battery Charging System

Electronics

Raymarine Ray210 VHF Radio	Raymarine E-120 Radar/Plotter/Sounder
Ray220 VHF w/Hailer	MDV115 CD Stereo w/Sony XS-MP61 Speakers
Raytheon ST7001 + Autopilot w/ST600R Remote	w/Cockpit Remote Control Jabsco Remote
Raymarine RL70C Color Radar	Spotlight Glendinning Engine Synchronizer
Raymarine L760 Color Sounder	Bennett Trim Tabs

Engine Room

After Cooler Service complete 9/2009	New Batteries 7/2009
Reverse Cycle Air Conditioning	Overboard Macerator Pump
Bilge Blower In Engine Room	Auto/Maunual Bilge Pumps
Racor Fuel/Water Separators	Glendinning Cablemaster
	Dripless Shaft Logs
	Oil Change System
	Bennett Hydraulic Trim Tabs
	Hydraulic Steering
	Halon System in Engine Room
	Oversize Raw Water Intake Strainers 2 ea.
	Safe-T-Alert CO and Smoke Detectors

Exclusions

Owner's personal gear, fishing tackle and tools.

Galley

The large, fully equipped galley is down to starboard and offers generous storage areas.

Two Burner Princess Ceran Cooktop	Emerson Nova Cool Side-by-Side
-----------------------------------	--------------------------------

Microwave Oven Black and Decker Coffee Maker
Corian Counters With Molded-In Sink Hardwood
Galley Sole

Refrigerator/Freezer Princess Ceran Two
Burner Stove Top Hot and Cold Pressure
Water System

Salon

JVC 19" Color TV JVC VHS Video Tape Player Panasonic DVD Player

Exclusions

Owner's personal belongings.

Disclaimer

The Company offers the details of this vessel or yacht in good faith but cannot guarantee or warrant the accuracy of this information nor warrant the condition of the vessel. A buyer should instruct his representatives, agents, or his surveyors, to investigate such details as the buyer desires validated. This vessel or yacht is offered subject to prior sale, price change, or withdrawal without notice.

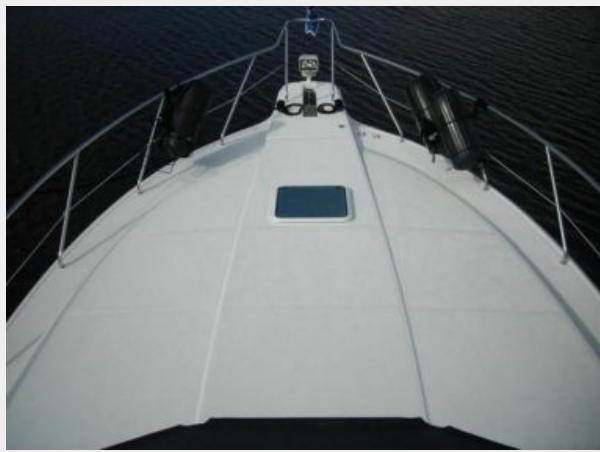
PHOTOS

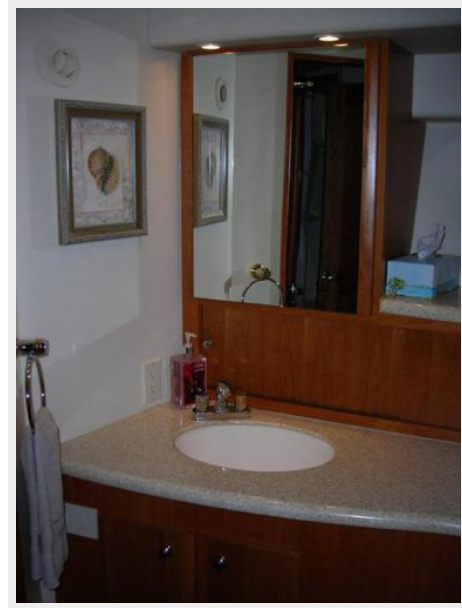
Transom View

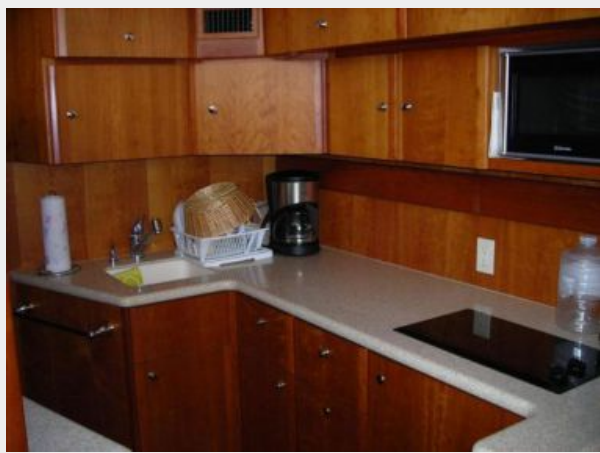


Helm











CONTACTS

Andrey Shestakov, leading yacht broker of the sales department of Shestakov Yacht Sales Inc. Shestakov Yacht Sales Inc., the official representative of the Miami/Fort Lauderdale FL headquarters.

Contact details

Email: andrey@shestakovyachtsales.com

Web: shestakovyachtsales.com/en/

Telephones

USA: +1(954)274-4435

Office hours

Monday – Saturday: **9:00 - 21:00** EDT

Sunday: **closed**

Address



Harbour Towne Marina, 850 NE 3rd St,
STE 213, Dania, FL 33004