

## VOYAGER — GRAND BANKS



**Builder:** GRAND BANKS

**Year Built:** 1990

**Model:** Trawler

**Price:** PRICE ON APPLICATION

**Location:** United States

**LOA:** 42' 0" (12.80m)

**Beam:** 13' 8" (4.14m)

**Max Draft:** 4' 3" (1.27m)

**Cruise Speed:** 9 Kts. (10 MPH)

**Max Speed:** 11 Kts. (13 MPH)

Our experienced yacht broker, Andrey Shestakov, will help you choose and buy a yacht that best suits your needs **VOYAGER — GRAND BANKS** from our catalogue. Presently, at Shestakov Yacht Sales Inc., we have a wide variety of yachts available on our sale's list. We also work in close contact with all the big yacht manufacturers from all over the world.

If you would like to buy a yacht **VOYAGER — GRAND BANKS** or would like help answering any questions concerning purchasing, selling or chartering a yacht, please call **+1(954)274-4435**

---

# TABLE OF CONTENTS

---

TABLE OF CONTENTS	2
SPECIFICATIONS	3
Overview	3
Basic Information	3
Dimensions	3
Speed, Capacities and Weight	3
Accommodations	4
Hull and Deck Information	4
Engine Information	4
DETAILED INFORMATION	5
Accommodations	5
Salon	5
Galley	5
Lower Helm	6
Upper Helm	6
Deck Equipment	6
Electrical System	7
Dinghy	8
Exclusions	8
Disclaimer	8
PHOTOS	9
CONTACTS	11
Contact details	11
Telephones	11
Office hours	11
Address	11

---

# SPECIFICATIONS

---

## Overview

---

CALL for full screen detailed photo presentation and complete inventory! ONLY 1990 or newer 42 GRAND BANKS UNDER \$200K! Priced to sell and detailed logs of maintenance and offshore upgrades by knowledgeable yachtsman owner. ISLAND BERTH in master, WASHER/DRYER, worldwide SATELLITE E-MAIL and weather. Village WATERMAKER, near new ENGINE DRIVEN and AC refrigeration compressors for redundancy, upgraded 100 amp alternator, HEART INVERTER, C-MAPS Florida to Trinidad, SSB receiver, NOVURANIA RIB tender 2002 with 15hp Mariner outboard, ECONOMICAL Ford Lehmans, FULL FB ENCLOSURE, PROPANE STOVE, GENERATOR and AIR CONDITIONING, MORE!

## Basic Information

---

**Category:** Trawler

**Sub Category:** Double Cabin

**Model Year:** 1990

**Year Built:** 1990

**Country:** United States

**Fly Bridge:** Yes

**Cockpit:** Yes

## Dimensions

---

**LOA:** 42' 0" (12.80m)

**Beam:** 13' 8" (4.14m)

**Max Draft:** 4' 3" (1.27m)

**Clearance:** 22' 7" (6.86m)

## Speed, Capacities and Weight

---

**Cruise Speed:** 9 Kts. (10 MPH)

**Max Speed:** 11 Kts. (13 MPH)

**Displacement:** 35000 Pounds

**Water Capacity:** 270 Gallons

**Holding Tank:** 35 Gallons

**Fuel Capacity:** 600 Gallons

---

## Accommodations

---

**Total Cabins:** 2

**Total Berths:** 2

**Sleeps:** 4

---

## Hull and Deck Information

---

**Hull Material:** Fiberglass

**Deck Material:** Fiberglass

**Hull Configuration:** Semi-Displacement

---

## Engine Information

---

**Engines:** 2

**Manufacturer:** Ford Lehman

**Model:** Super 135

**Engine Type:** Inboard

**Fuel Type:** Diesel

---

# DETAILED INFORMATION

---

## Accommodations

---

Standard Grand Banks 42 Classic layout with ISLAND BED aft. Straight galley to port in salon, lower helm station with helm seat. Generous L-settee to port. Teak parquet floors. Teak cabinetry and joinerwork throughout.

## Salon

---

- Dark blue salon upholstery (NEW 2007)
- Symphonic TV VCR in salon
- DVD player (NEW 2007)
- JVC stereo with 12 disc changer and Bose 151 speakers
- CruiseAire airconditioning throughout
- Helmseat with icemaker (NEW U-Une 2007)

## Galley

---

- Large single basin SS sink, Delta faucet:
- Princess 3 burner propane stove with oven
- Remote propane safety shutoff system
- Microwave on counter
- Groco K manual head, aft
- Groco K manual head, forward, with LectraSan Type II treatment system
- Holding plate fridge, undercounter II Holding plate freezer; in cabin sole
- Redundant refrigeration compressors: engine

---

driven (NEW 2007), 110VAC (NEW 21006)

## Lower Helm

---

- ICOM M504 VHF radio, NEW 2007
- Raytheon R70 radar with HSB link to plotter
- AutoHelm 7000 (inoperative)

## Upper Helm

---

- RayMarine RC520 chartplotter  
with HSB link to radar
- C-Map chips, FL to Trinidad
- Raytheon TriData: depth, speed, temp
- SkyMate system: satellite email and  
weather, worldwide
- Glendinning engine synchronizer
- Morse cable dual-lever controls  
II Grand Banks cable steering
- Sony Arll FM tape system w/ Sony speakers
- Davis:weather station
- Grundig Yachtboy portable SSI3 receiver,  
worldwide weather and sea state information

## Deck Equipment

---

Bronze hardware including cleats and hawses

Laid teak decks, natural

Varnished teak toerails and caprails, SS stanchions

SS grabrails and handholds

Transom and door trims painted white

Boom system with electric winch

Harken traveller system

Lofrans electric windlass

Delta 55 w/ 200' 3/8" all-chain rode, stbd.

Danforth anchor, port

Textaline window covers

Navy blue bimini canvas and

bridge covers

Full bridge enclosure, Navy

blue

Closed cell bridge cushions

---

## Electrical System

---

- Onan 8KW generator in soundshield
- Heart Freedom 30 inverter system
- Balmar 100 amp alternator on stbd.
- Stbd. engine batteries, NEW 2007
- Port engine batteries, NEW 2008
- Generator batteries, 2 deep cycle
- Inverter batteries: (6) deep-cycle golfcart batteries
- Batteries: 2 extra 6V

- Battery charger
- Shore power cords and adapters

## Dinghy

---

Novurania RIB 2002 with Mariner 15hp outboard

## Exclusions

---

Owner's personal belongings.

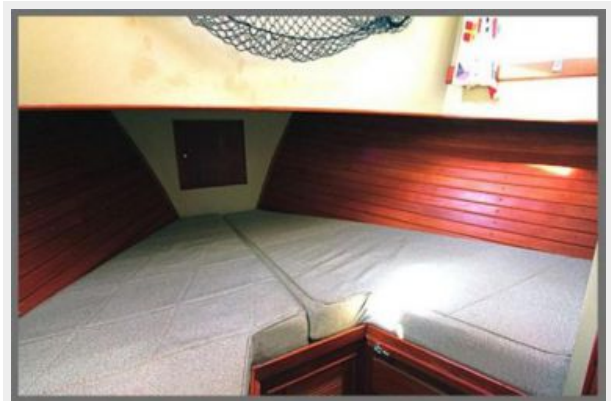
## Disclaimer

---

The Company offers the details of this vessel or yacht in good faith but cannot guarantee or warrant the accuracy of this information nor warrant the condition of the vessel. A buyer should instruct his representatives, agents, or his surveyors, to investigate such details as the buyer desires validated. This vessel or yacht is offered subject to prior sale, price change, or withdrawal without notice.



# PHOTOS





---

# CONTACTS

---

Andrey Shestakov, leading yacht broker of the sales department of Shestakov Yacht Sales Inc. Shestakov Yacht Sales Inc., the official representative of the Miami/Fort Lauderdale FL headquarters.

---

## Contact details

---

Email: [andrey@shestakovyachtsales.com](mailto:andrey@shestakovyachtsales.com)

Web: [shestakovyachtsales.com/en/](http://shestakovyachtsales.com/en/)

---

## Telephones

---

USA: +1(954)274-4435

---

## Office hours

---

Monday – Saturday: **9:00 - 21:00** EDT

Sunday: **closed**

---

## Address

---



Harbour Towne Marina, 850 NE 3rd St,  
STE 213, Dania, FL 33004