

KNOT FOR PROFIT — PURSUIT



Builder: PURSUIT

Year Built: 2001

Model: Sport Fisherman

Price: PRICE ON APPLICATION

Location: United States

LOA: 30' 0" (9.14m)

Beam: 10' 6" (3.20m)

Min Draft: 2' 10" (0.86m)

Cruise Speed: 24 Kts. (28 MPH)

Max Speed: 34 Kts. (39 MPH)

Our experienced yacht broker, Andrey Shestakov, will help you choose and buy a yacht that best suits your needs **Knot For Profit — PURSUIT** from our catalogue. Presently, at Shestakov Yacht Sales Inc., we have a wide variety of yachts available on our sale's list. We also work in close contact with all the big yacht manufacturers from all over the world.

If you would like to buy a yacht **Knot For Profit — PURSUIT** or would like help answering any questions concerning purchasing, selling or chartering a yacht, please call **+1(954)274-4435**

TABLE OF CONTENTS

TABLE OF CONTENTS	2
SPECIFICATIONS	5
Overview	5
Basic Information	5
Dimensions	5
Speed, Capacities and Weight	5
Accommodations	6
Hull and Deck Information	6
Engine Information	6
PHOTOS	7
Helm area	7
Helm	7
Compass	7
Electronics	7
Electronics II	7
Auto Pilot	7
VHF radio	8
Gages	8
Helm area II	8
Hard Top	8
Morse controls	8
Morse controls II	8
Helm seat	9
Helm portside seating	9
Helm storage	9
Helm storage II	9
Helm storage III	9
Fishing deck	9

Cooler	10
Tackle drawer	10
Livewell	10
Livewell II	10
Livewell and aft facing seat	10
Portside deck level	10
Starboard deck level	11
Bait station sink	11
Windlass	11
Windlass II	11
Foredeck	11
Hardtop	11
Windsheild	12
Hardtop 10 Rocket Launchers	12
V-Berth	12
Dinette	12
Rod storage	12
Rod storage II	12
Galley	13
Stove	13
Refrigerator	13
Refrigerator II	13
Galley II	13
Head	13
Toilet	14
Shower seat	14
Head sink	14
Cabin	14
Stairs to cabin	14

Battery switches	14
Inverter	15
Air Conditioning unit	15
Control Panel	15
Climate control	15
Engines	15
Port Engine	15
Starboard Engine	16
Bilge	16
Starboard tranny shaft	16
Port tranny shaft	16
Engine room	16
Engine room	16
Engine room	17
Running gear	17
Running gear	17
Running gear	17
Running gear	17
CONTACTS	18
Contact details	18
Telephones	18
Office hours	18
Address	18

SPECIFICATIONS

Overview

High end inboard express offered solid construction and high customer satisfaction. Luxury decor , booth style dinette, fully equipped galley, large double berth forward, private head. Transom door, in deck fish box, bait prep center, coaming bolsters, fold-away transom bench seat, tall windshield. Bridgedeck lifts for engine room access. Twin 350 MerCruiser Horizons 320 hp, engine synchronizers, hard-top, outriggers, windlass, air conditioning, converter, outriggers. Nice boat! Contact Bob Bourque 401-480-4119. Boat is being detailed now. Pictures coming soon.

Basic Information

Category: Sport Fisherman

Sub Category: Express

Model Year: 2001

Year Built: 2001

Country: United States

Coast Guard #: 1142024

Cockpit: Yes

Dimensions

LOA: 30' 0" (9.14m)

Beam: 10' 6" (3.20m)

Min Draft: 2' 10" (0.86m)

MFG Length: 32' 8" (9.96m)

Speed, Capacities and Weight

Cruise Speed: 24 Kts. (28 MPH)

Max Speed: 34 Kts. (39 MPH)

Displacement: 10600 Pounds

Water Capacity: 30 Gallons

Holding Tank: 18 Gallons

Fuel Capacity: 210 Gallons

Accommodations

Total Berths: 2

Sleeps: 4

Total Heads: 1

Hull and Deck Information

Hull Material: Fiberglass

Deck Material: Fiberglass

Hull Configuration: Deep Vee

Hull Color: White

Engine Information

Engines: 2

Manufacturer: Mercruiser

Model: 350 Horizon

Engine Type: Inboard

Fuel Type: Gas

PHOTOS

Helm area



Helm



Compass



Electronics



Electronics II



Auto Pilot



VHF radio



Gages



Helm area II



Hard Top



Morse controls



Morse controls II



Helm seat



Helm portside seating



Helm storage



Helm storage II



Helm storage III



Fishing deck



Cooler



Tackle drawer



Livewell



Livewell II



Livewell and aft facing seat



Portside deck level



Starboard deck level



Bait station sink



Windlass



Windlass II



Foredeck



Hardtop



Windsheild



Hardtop 10 Rocket Launchers



V-Berth



Dinette



Rod storage



Rod storage II



Galley



Stove



Refrigerator



Refrigerator II



Galley II



Head



Toilet



Shower seat



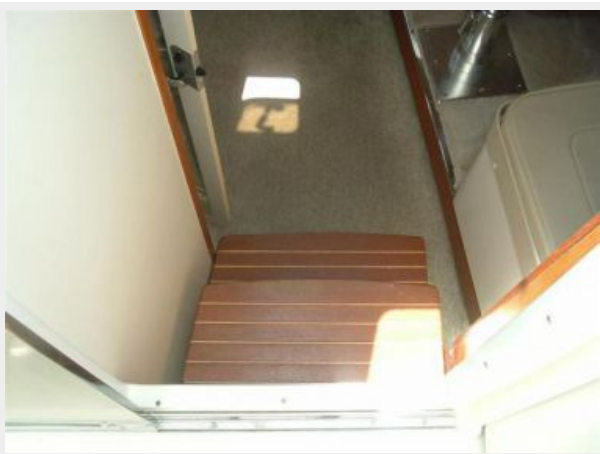
Head sink



Cabin



Stairs to cabin



Battery switches



Inverter



Air Conditioning unit



Control Panel



Climate control



Engines



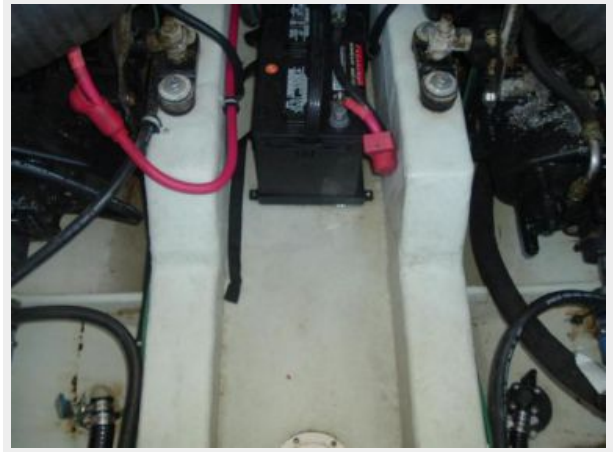
Port Engine



Starboard Engine



Bilge



Starboard tranny shaft



Port tranny shaft



Engine room



Engine room



Engine room



Running gear



Running gear



Running gear



Running gear



CONTACTS

Andrey Shestakov, leading yacht broker of the sales department of Shestakov Yacht Sales Inc. Shestakov Yacht Sales Inc., the official representative of the Miami/Fort Lauderdale FL headquarters.

Contact details

Email: andrey@shestakovyachtsales.com

Web: shestakovyachtsales.com/en/

Telephones

USA: +1(954)274-4435

Office hours

Monday – Saturday: **9:00 - 21:00** EDT

Sunday: **closed**

Address



Harbour Towne Marina, 850 NE 3rd St,
STE 213, Dania, FL 33004