

## SEA U LATER — HARGRAVE



**Builder:** HARGRAVE

**Year Built:** 2010

**Model:** Motor Yacht

**Price:** PRICE ON APPLICATION

**Location:** United States

**LOA:** 101' 0" (30.78m)

**Beam:** 21' 0" (6.40m)

**Min Draft:** 5' 8" (1.73m)

**Cruise Speed:** 18 Kts. (21 MPH)

**Max Speed:** 21 Kts. (24 MPH)

Our experienced yacht broker, Andrey Shestakov, will help you choose and buy a yacht that best suits your needs **SEA U LATER — HARGRAVE** from our catalogue. Presently, at Shestakov Yacht Sales Inc., we have a wide variety of yachts available on our sale's list. We also work in close contact with all the big yacht manufacturers from all over the world.

If you would like to buy a yacht **SEA U LATER — HARGRAVE** or would like help answering any questions concerning purchasing, selling or chartering a yacht, please call **+1(954)274-4435**

# TABLE OF CONTENTS

TABLE OF CONTENTS	2
SPECIFICATIONS	4
Overview	4
Basic Information	4
Dimensions	4
Speed, Capacities and Weight	4
Accommodations	5
Hull and Deck Information	5
Engine Information	5
DETAILED INFORMATION	6
YACHT DESCRIPTION AND DETAILS	6
Exclusions	9
Exclusions	9
Disclaimer	9
PHOTOS	10
Aft Deck	10
Aft Deck	10
Main Salon	10
Back Lit Salon Bar Top	11
Main Deck Day Head	12
Main Deck Day Head	12
Enclosed Helm	12
Helm	13
Sky Lounge Bar	13
Sky Lounge	13
Sky Lounge	13
Skylounge Powder Room	13
Sky Lounge	13

---

Sun deck	14
16" Walkaround	14
Master Stateroom	15
Master Bath	16
Forward VIP	16
Forward VIP	16
Forward VIP Bath	17
Port Guest Stateroom	17
Guest Stateroom en suite head	17
Guest Stateroom with twin beds and pullman	18
Engine Room	19
Layout -- Main Deck and Lower Deck	19
Layout -- profile and Sky Lounge	19
CONTACTS	20
Contact details	20
Telephones	20
Office hours	20
Address	20

---

---

# SPECIFICATIONS

---

## Overview

---

Beautiful Sky Lounge built for experienced boaters with features and equipment you would expect on Mega Yacht. Accomodations: Guests: 4 Staterooms/Sleeps 9 Crew: Cabins 2/Sleeps 4 Cruising Speed: 18 knots Cruising Speed RPM: 2050  
Max Speed: 21 knots Max Speed RPM: 2300

## Basic Information

---

**Category:** Motor Yacht

**Sub Category:** Pilothouse

**Model Year:** 2010

**Year Built:** 2010

**Country:** United States

**Vessel Top:** Enclosed P.H. W/Sundeck

## Dimensions

---

**LOA:** 101' 0" (30.78m)

**LWL:** 90' 0" (27.43m)

**Beam:** 21' 0" (6.40m)

**Min Draft:** 5' 8" (1.73m)

**Clearance:** 34' 0" (10.36m)

**MFG Length:** 101' 0" (30.78m)

## Speed, Capacities and Weight

---

**Cruise Speed:** 18 Kts. (21 MPH)

**Cruise Speed RPM:** 2050 Kts.

**Max Speed:** 21 Kts. (24 MPH)

**Max Speed RPM:** 2300 Kts.

**Displacement:** 233689.99772 Pounds

**Water Capacity:** 600 Gallons

**Holding Tank:** 250 Gallons

**Fuel Capacity:** 3200 Gallons

---

## Accommodations

---

**Total Cabins:** 4

**Total Berths:** 7

**Sleeps:** 9

**Total Heads:** 9

**Captain Cabin:** True

**Crew Cabin:** 2

**Crew Berths:** 3

**Crew Sleeps:** 4

**Crew Heads:** 2

---

## Hull and Deck Information

---

**Hull Material:** Fiberglass

**Deck Material:** Fiberglass

**Hull Configuration:** Semi-Displacement

**Hull Color:** White

**Hull Finish:** Stainless Steel

**Exterior Designer:** Hargrave Custom Yachts

**Interior Designer:** Yacht Interiors by Shelley

---

## Engine Information

---

**Engines:** 2

**Manufacturer:** Caterpillar

**Model:** C-32

**Engine Type:** Inboard

**Fuel Type:** Diesel

---

# DETAILED INFORMATION

---

## YACHT DESCRIPTION AND DETAILS

---

Sea U Later has four large staterooms with 6 berths which can easily accommodate 9 guests. The stateroom layout for guests is not the usual four cabins down a hall design. This yacht spent the extra money to have a very generous VIP forward with King Bed entered by private staircase from the galley. The Master and two Guests are down a separate stairway with a large 58.73 square foot foyer. Located aft, there are two crew cabins. The staterooms and cabins are equipped with en suite heads.

**Aft deck** This custom size teak table seats 10 comfortably. The center of the table has an inlaid design of a striking sunburst. The cushions are upholstered in a spa canvas with a bold contrast of cocoa piping. The accent pillows are casual and fun combining neutral tones within the stripe.

**Salon** Comfortable sectional sofa that seats (9), upholstered in a truffle sculpted velvet with seamist and gold accent pillows. The main salon sectional sofa has a console forward of it that divides the dining space from the salon with an abundance of storeroom, as well as display for cherished china and bar essentials. On the port side of the salon a full entertainment center with a 50" HD/TV recessed in the cabinet face, great for entertaining. A custom bar that seats (3), with a honey amber onyx bar top that has LED back lighting which illuminates the space creating the overall ambiance. This salon is the perfect room for entertaining whether you are expecting an intimate group of guests or planning a large affair.

**Dining** Dining area forward of main salon with seating for eight on a beautiful Star sepeli wood table. The chairs were custom built with the bookmatched wood supplied from the boat.

**Galley** The Galley area is just off the Main Salon creating a private dinette area that is elevated with storage forward and below, seating (6). While still portraying the elegance of the yacht, this area has a casual flare embracing rich tones. Throughout the boat, the cabinetry is gloss Sapeli with counter tops in beautiful Makore Wave. The exquisite stone selection for the counter tops are Santa Cecelia granite. All of the appliances are stainless steel, and full size. The layout for this galley was designed especially for a chef that enjoys entertaining guest while stirring up delectable cuisine. Keeping in mind that every chef needs plenty of cookware and utensils, this layout more than accommodates the necessary storage space and includes a spacious walk-in pantry with shelving from floor to ceiling.

**Day Head** Continuing the color palate of the main deck, this spacious day head is unique in design. Complete with a hand crafted Renaissance Glassworks Evergreen Vessel Style lavatory, mounted on top of a Gloss Sapeli "Cone" shaped vanity, accented with Kohler Vibrant French Gold plumbing fixture and accessories. Illuminated with hand-rubbed Antique Brass Openwork single wall hung sconces, that have Frosted Glass Shades. The Perlato Suevo marble slab flooring includes a 2" framed border of Emperadora Light marble surrounding an inlay of 2" x 2" Triangular Renaissance Glassworks Evergreen and Amber Glass Floor Tiles.

**Sky Lounge** This well-designed gathering space is designate for masculine appeal. Utilizing rich tones and leather upholstery we have created a warm and inviting room. Yet another fabulous space for entertaining guests with a full service bar that seats(3) or lounging on the settee while watching the retractable 42” HD/TV or joining the Captain at the helm in the two companion Stidd Chairs.

**Sky Lounge Head** With convenient access to both the Skylounge and the Boat deck the intent of the design was an elegant transition. We selected Emperadora Light marble slab flooring, with a 4” perimeter border of Emperadora Dark marble to coordinate with the vanity counter top accented with Kohler Vibrant French Gold plumbing fixtures and accessories as well as a hand crafted Le Bijou Monaco lavatory sink base color Bone with Burnished Gold Reed and Burnished Platinum Ribbons.

**Deck** This boat deck defines the ultimate cruising experience. Including a 68” Diameter Spa tub surrounded by a bench style settee, facilitating storage below accompanied by a walk-up bar that seats (4) guests, optimizing the ability to engage in conversation at eye level, and adjacent a settee with seating for (6) and adjustable high/low tables for dining. Also includes a port side bar complete with refrigerator, Hoshizaki clear ice, and a Fire Magic drop-in style grill with storage below and additional storage for propane tanks.

**Lower Foyer** This area has an enclosed spiral stair case leading from the Main Salon to the Lower Deck with curved style steps and a Gloss Sapeli handrail. The flooring stone selections soften the area with contrasting shades of Emperadora Light and Perlato Suevo marble. These selections compliment the 24” Compass shaped medallion fabricated from marble stones such as Jet green, Verde green, Emperadora Light, and Rojo Alicante that is centrally located at the entrance of the Master suite. We have applied a gloss Sapeli chair rail around the perimeter of the space to enhance the details of this foyer. We incorporated clear mirrors with touch latch hardware for access to hidden storage above a curved face console between two floor to ceiling columns. This space includes a laundry closet that stores a stackable washer/dryer unit.

**Master Stateroom** This large and spacious owner’s suite is complete with a King size bed framed out with Gloss Makore Wave fluted columns with a clear mirror backdrop. The Makore Wave curved, trimmed headboard is upholstered in a Kravet Chenille Jubilee fabric and tufted with Polished Brass buttons. (2) Visual Comfort French Deco Horn Hand-Rubbed antique brass wall hung lamps with linen shades, Dual nightstands with Perlato Suevo marble countertops, 32” HD/TV, (2) large walk-in closets, a full size dresser, a settee for (2) with storage space below and his/her luxurious bath with a common spacious shower in between, incorporating Rojo Alicante and Perlato Suevo stones.

**Guest Staterooms** This Guest Stateroom rooms have (2) twin size beds that convert to a queen size berth, as well as a recessed Pullman that folds down maximizing floor space. To visually create the illusion of enhanced space, beveled mirrors were applied on the forward wall. The headboard is a Gloss Sapeli trim upholstered with a Kravet Chenille Jubilee. We have introduced neutral tones and accented with hues reminiscent of the ocean to flow with the overall scheme of the vessel. In the head, we selected Perlato Suevo and Emperadora Light marble stone

for the floor space and vanity counter top. This head has a large shower with teak grate flooring, and generous storage space.

**VIP Staterooms** The VIP Guest stateroom is privately accessed from the galley. This secluded, yet spacious guest stateroom has a king size bed surrounded by multiple storage closets and an entertainment unit with a built in HD/TV. The colors are gentle shades of aqua with hints of chocolate and crème. In the head, we have selected marble stones Emperadora light and Emperadora dark.

**Lazarette and Crew** This generous crew lounge area is complete with a fully functional refrigerator, microwave, and an upright freezer. Easily accessible stackable washer and dryer unit, utility storage area with floor to ceiling cabinetry, heavy duty drawer capacity and counter work space. Private captain and crew staterooms that both have en suite heads with Emperadora light marble counter tops and shower seats as well as teak grate flooring in the showers.

**Equipment 2"** Deckfills for fuel and water Built in hand held shower on swim platform Chain stripper w/ chain stop Windlass operation from Pilothouse and Flybridge Stainless steel cleats (8) 4" SS shafts equivalent to Aquamet 22 5 blade bronze propellers Emergency tiller Stainless steel rudders Double layer of sound and heat insulation in Engine room bulkhead forward, aft and ceiling Dual Raycor 1000 FG fuel filter/water separator for each engine Hydraulic Bow Thruster 12HT-38hp and stern thruster Hydraulic steering by Hynautic, adaptable to auto-pilot Engine Alarm System for low pressure & high temperature supplied by Cat 24v lights and 110v power receptacles in Engine room Custom underwater engine exhaust w/idle by-pass 250 Gallon Headhunter waste treatment system Fresh water filling faucet in Engine room Y-Valve for dockside pump out (8) 200 amp/hr batteries for engine & ship power Separate 120 amp/hr battery for generators Main electrical panel w/ separate AC Power control and circuit breaker panel 24 volt DC monitoring and main circuit breaker panel 110 volt duplex receptacles located throughout vessel, including engine room Indirect rope lighting under valances in salon, staterooms, sky lounge and galley Cedar lined closet Boat panel indicator located at helm Auto sliding Stainless Steel aft deck door frame Black Textile front window covers Stidd Helm and Passenger seat in Sky Lounge (3) Freeman Hatches Lexan hatch from aft deck to Fly Bridge deck Cat instruments at helm (Tach/Oil Pressure/Engine Temp/TransPressure/Hrs) Fresh water washdown (3) three locations - Bow / aft deck / flybridge Sea Chest 4 FRP sump tanks with tinted acrylic cover 100 AMP Galvanic Isolator **Entertainment** Sharp LCD 52" LCD TV w/ Bottom Speakers Sharp LCD Blu Ray DVD Player (4) Ipod docking stations w/ video & charging Sunfire Jr sub woofer (2) RTI Remote Sharp LCD 42" LCD w/ Bottom Speakers (3) DirectTV HD DSS Receivers Sharp LCD 20" LCD TV TV Lift Marantz SR 5002 7.1 Home Theater Sonance Symphony TL 623R Thinline Ceiling speakers 32" Flip Down for Skylounge Aft Deck TV Sharp 32" HD LCD TV w/ Bottom Speakers DVD/CD Receiver Am/FM Sharp LCD 19" TV Audiovox Dropdown 10" LCD DVD TV, for Crew bunks x 2 Audiovox IR headphones for flipdown DVD at crew bunks x 2 **Deck**

**Equipment 1-1/2"** Teak Cap Rail on Aft Deck to forward edge of the boarding gates Port and starboard corner roller for stern tying and towing (8) Exterior waterproof lights on bow Automatic/Manual aft Sky Lounge door w/ stainless steel frame & tinted glass Steelhead Marine 2500 lb. davit on boat deck BBQ Grill at F/B Grohe Hand held shower inside cabinet of stbd Aft Flybridge Settee Hi-Lo and Sliding Mechanism for Table between two cooler at Boat Deck FRP Bar &



Marble Top at Boat Deck Marble port counter top at Boat Deck Aft deck bench seating Aft deck teak table Seawatch (4) Underwater Lights Drop Down TV Lift at aft deck **Navigation** Danforth Compass 5" in upper helm Furuno FA 150 AIS System at helm Master M19-31 19" Glass Display at helm x 4 screens Panasonic PH T-7731-B spkr phone x 9 Wireless N Access WiFi Router x3 @ Skylounge & Master KVH FB250 Sat Phone, satellite voice fax and data mounted at mast Furuno GP 37 DGPS+WAAS Combination at helm Raymarine ST 60 + Depth Display at helm Raymarine ST 60 + Depth Display no Duc speed display only at helm Simrad AP 25 w/AC20 & RPU-80 at helm Pelco 3 Camera Outdoor Ptz System 2 aft deck corners, 1 at mast all facing aft Pelco Dome Cam Indoor color cam Flush PTZ mounted at engine room **Appliances** GE White Washer/Dryer (2) Avanti Black Fridge in Lazarette Sharp compact S/S Microwave in Lazarette Sub-Zero S/S Refrigerator with Double Drawers in Galley Sub-Zero Refrigerator and Freezer Drawer in Galley Dacor Black Cooktop Oven in Galley GE Microwave in Galley Miele Sapeli Dishwasher with S/S control Box & Door Panel in Galley Kitchenaid Sapeli Compactor W/O Door Panel in Galley Grohe Chrome Faucet in Galley Sub-Zero 424G/S Classic Stainless Glass Door Wine Cooler in Galley U-Line Black Ice Maker - Double Drawers in Salon U-Line White Fridge at Aft Deck U-Line Black Fridge at F/B Fire Magic propane Gas Grill in F/B U-Line Fridge in F/B Hoshizaki S/S Clear Ice Maker in F/B **USA Installed Options** Nautica RIB15 Widebody Tender w/ Yamaha 90 HP Safety Package-Life Jackets/Fenders/Fire Extinguishers/Dock Sea Recovery 1400 GPD Watermaker Marquipt Sea Stairs Headhunter Tidal Wave Waste Treatment System Stidd Helm Chair Model 500 low back x 2

---

## Exclusions

Owner's personal effects, art work and statues are not included. A detailed list is available prior to any written offer.

---

## Exclusions

Owner's personal belongings.

---

## Disclaimer

The Company offers the details of this vessel or yacht in good faith but cannot guarantee or warrant the accuracy of this information nor warrant the condition of the vessel. A buyer should instruct his representatives, agents, or his surveyors, to investigate such details as the buyer desires validated. This vessel or yacht is offered subject to prior sale, price change, or withdrawal without notice.

# PHOTOS

**Aft Deck**



**Aft Deck**



**Main Salon**



### Back Lit Salon Bar Top





**Main Deck Day Head**



**Main Deck Day Head**

**Enclosed Helm**



**Helm**



**Sky Lounge Bar**



**Sky Lounge**



**Sky Lounge**



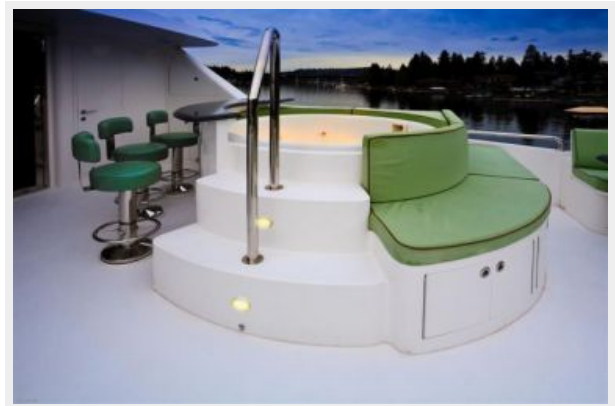
**Sky Lounge**



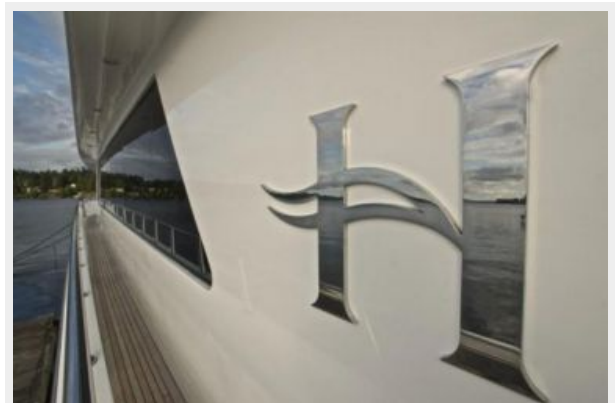
**Skylounge Powder Room**



### Sun deck

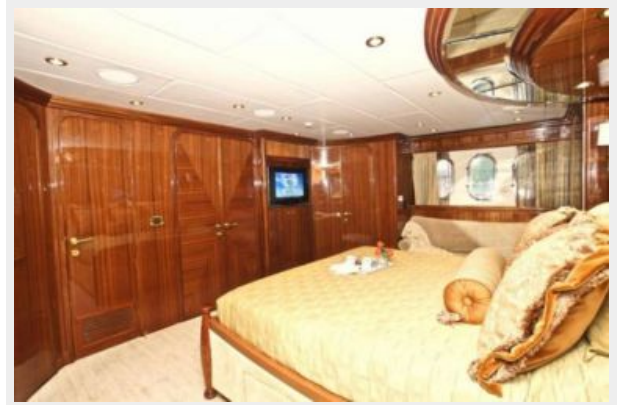


### 16" Walkaround





### Master Stateroom



**Master Bath**



**Forward VIP**



**Forward VIP**





**Forward VIP Bath**



**Port Guest Stateroom**



**Guest Stateroom en suite head**





**Guest Stateroom with twin beds and pullman**





**Engine Room**



**Layout -- Main Deck and Lower Deck**



**Layout -- profile and Sky Lounge**



# CONTACTS

---

Andrey Shestakov, leading yacht broker of the sales department of Shestakov Yacht Sales Inc. Shestakov Yacht Sales Inc., the official representative of the Miami/Fort Lauderdale FL headquarters.

## Contact details

---

Email: [andrey@shestakovyachtsales.com](mailto:andrey@shestakovyachtsales.com)

Web: [shestakovyachtsales.com/en/](http://shestakovyachtsales.com/en/)

## Telephones

---

USA: +1(954)274-4435

## Office hours

---

Monday – Saturday: **9:00 - 21:00** EDT

Sunday: **closed**

## Address

---



Harbour Towne Marina, 850 NE 3rd St,  
STE 213, Dania, FL 33004