

NO NAME — CSY



Судостроитель: CSY

Год постройки: 1978

Модель: Крейсерский кеч

Цена: ЦЕНА ЯХТЫ ПО ЗАПРОСУ

Местонахождение: United States

Длина общая: 44' 0" (13.41m)

Ширина: 13' 5" (4.06m)

Макс. осадка: 5' 0" (1.50m)

Купить **No Name — CSY** а также выбрать подходящую вам яхту из нашего каталога яхт вам поможет опытный яхтенный брокер Андрей Шестаков. На сегодняшний день компания **Shestakov Yacht Sales Inc.** имеет большое количество яхт в собственном списке продаж, а также тесно сотрудничает со всеми крупными яхтенными производителями по всему миру.

Для того чтобы купить яхту **No Name — CSY** а также проконсультироваться по любому вопросу связанному с покупкой, продажей, чартером яхт позвоните по телефону **+7(918)465-66-44**.

ОГЛАВЛЕНИЕ

ОГЛАВЛЕНИЕ	2
ХАРАКТЕРИСТИКИ	4
Обзор	4
Основная информация	4
Размеры	4
Скорость, вместимость и масса	5
Размещение	5
Корпус и палуба	5
Информация о двигателе	5
ПОДРОБНОЕ ОПИСАНИЕ	6
Accommodations	6
Galley	6
Refrigeration and Air Conditioning	6
Engine /Mechanical Equipment	6
Sails and Rigging	7
Electrical System & Bow Thruster	7
Electronics and Navigational Equipment	7
Ground Tackle	7
Deck Equipment	8
Hull	8
Исключения	8
Отказ от ответственности	8
ФОТОГРАФИИ	9
Enclosed Cockpit	9
Stern and custom hardtop	9
easy maintenance fiberglass decks	9
Bow with windlass and anchor platform	9
Main Salon facing forward	10

Salon facing aft	10
detail of one of classic main salon hatches	10
Salon facing companionway	10
Galley with hatch above	10
one of mutiple salon overhead hatches	10
refrigerator and electrical	11
Master aft facing stern	11
Nav station in Master	11
Forward guest cabin	11
additional storage by hanging locker forward	11
Forward hanging locker	11
head next to separate shower forward	12
separate stall shower	12
bilge view	12
2009 Mainsail Stack Pack	12
Rig view to masthead	13
New mainsail	13
КОНТАКТЫ	14
Контактная информация	14
Телефоны	14
Время работы	14
Адрес	14

ХАРАКТЕРИСТИКИ

Обзор

MULTIPLE FORMER OWNERS of CSYs have recently been noted as BUYING THESE BOATS BACK realizing exceptional value for dollars. With heavy unparalleled SOLID FIBERGLASS CONSTRUCTION notably WITHOUT CORING, these high end, well laid out vessels represent a good choice in an ocean passagemaking sailing yacht. This is a BOAT MARINE SURVEYORS BUY FOR THEMSELVES as well for the advantageous numbers but WITHOUT the expensive after sale dollars on coring issues, or broken components that are rare on CSYs with bronze (not plastic) ports, etc. and other substantial hardware. That this one has been even more IMPRESSIVELY UPGRADED to 2009 CONDITION with major refit improvements, PLUS additions to a stock model, make it one to consider at these attractive numbers. ONLY TWO OWNERS SINCE NEW, the current since 1998 and the first for twenty years. This vessel includes SIGNIFICANT EXTRAS including a fabulous hardtop COCKPIT ENCLOSURE, a near new BOW THRUSTER for easy docking, recent holding plate refrigeration and recent air conditioning upgrades, a rebuilt Perkins diesel and replaced transmission, a NEW MAST and standing rigging, SAT TV, and wonderfully upgraded interior refinishing akin to a New England classic in lieu of dark and dated woodgrain formica. There is MUCH MORE on this head turning CSY making it READY TO CRUISE or LIVEABOARD in air conditioned comfort. This yacht boasts a 2009 Northern Lights GENERATOR which most don't have, a 1000 watt inverter, as well as significant new wiring and many additional such refit extras to set it apart from an old and used 30 year competitor. Call for detailed full screen wide angle slide show of pictures JUST TAKEN to see it this is the yacht for you as we expect it will be. This yacht is very competitively priced in the market for a cruise ready vessel in this condition with all the upgrades! Moreover as an investment we expect it to retain value WITHOUT the aftersale dollars of competitors to make this a wise choice in this economy. Photos are April 2010 and as it looks today!

Основная информация

Тип судна: Крейсерский кеч

Модельный год: 1978

Год постройки: 1978

Страна: United States

Размеры

Длина общая: 44' 0" (13.41m)

Длина по ватерлинии: 36' 5" (11.08m)

Ширина: 13' 5" (4.06m)

Макс. осадка: 5' 0" (1.50m)

Скорость, вместимость и масса

Водоизмещение: 37000 Pounds

Размещение

Всего кают: 2

Всего коек: 4

Спальные места: 6

Всего ком. состава: 2

Корпус и палуба

Материал корпуса: Fiberglass

Информация о двигателе

Двигатели: 1

Производитель: Perkins

Модель: 4-154C

Тип двигателя: Inboard

Тип топлива: Diesel

ПОДРОБНОЕ ОПИСАНИЕ

Accommodations

Private Master Stateroom in aft cabin, with spacious double berth (2008 custom mattresses), A center console provides storage and A/C outlets. A head and navigation station are also included in the aft stateroom. The galley is located aft to port in the main cabin. Forward of the galley is an "L" shaped settee with a dining table. Starboard salon is a settee that pulls out to a double bed with the back rest folding up to provide a top bunk. The head, forward to port has a door into the separate shower. Opposite to starboard are large hanging lockers. The forward V-berth stateroom sleeps two. The huge center cockpit has a removable table providing additional lounging-dining area. A pass thru window between galley and cockpit makes the cockpit a natural dining area.

Galley

A Starboard side two compartment chest type refrigeration unit provides cooling and freezing for over 16 cubic feet of food. A Luke Three burner stainless steel gimbaled stove with oven is fueled by two 20# aluminum propane tanks located in bottom vented locker in cockpit. Double Stainless Steel sinks, pressurized water system with engine/110 VAC 11 gallon water heater. Microwave oven that will operate off the inverter. Tons of storage space for utensils, food, and cooking items.

Refrigeration and Air Conditioning

Air Conditioners by Ocean Breeze, Fore Cabin - Model OB20CH, 20 KBTUH with heating coils
Aft Cabin - Model OB09CH, 9 KBTUH with heating coils Refrigeration - 16 cubic feet, Ocean Breeze, 110 Volt with 3 new Cold plates Engine Room Cooling Blower - Jabsco Model controlled by thermostat

Engine /Mechanical Equipment

Engine – Perkins 4-154C Hours since last major approx: 1500 High Performance – 90 Amp Alternator 2008 – New Main Heat Exchanger, New Raw Water Pump, Rebuilt injectors, Complete head job including new springs, reground valves, 2010 – Replaced fresh water pump To Many spares to mention Transmission – Borg Warner velvet, 3:1 Reduction, Left Hand 2009 – Replaced with rebuilt unit Fuel Tanks – Pulled in 2008 – Rebuilt, sandblasted, epoxy coated, installed fuel level senders 2009 - Reinstalled Water Heater – 2009 Force 10, 11 Gallon Holding Tank – 2009 28 gallon, both heads plumbed to tank and overboard with Jabsco macerator pump, renewed waste outlet to match pump out facilities Fuel Filters and Distribution - Dual Racor Filters and custom valve panel for generator and main engine New Bronze Main Engine Strainer

- 1-1/2"

Sails and Rigging

New One Piece Mast with new SS shrouds and Stays, 1998 Includes new in 2009 a LED Tri-Light, NASA designed Radar Reflector, Deck Light/Steaming Light, Hailing Speaker, Radar Dome with hydraulic leveler, Spot/Flood Light with remote control Stack Pack - Doyle Cradle Cover - 2009 Pin Rails with Belaying Pins for halyard and misc line clean up with antique running lights. Main Sail - new in 2009, Full batten, double reef. Doyle Manufacturer Old Mainsail is on boat and is excellent heavy weather Sail Foresail - 150% Jenny on Harken Roller Furler Spinnaker - Asymmetrical cruising spinnaker within a sock Cutter Rig - CSY44 was originally fitted with a staysail. We have the quick release fitting and the staysail Anchor Sail 1 Barient 20# self tailing winch 2 Barient #21 halyard winches 3 Barient #20 winches

Electrical System & Bow Thruster

Generator - Northern Lights (160 hours), diesel, model M673L2 Batteries - House (6) Trojan T-125 Main Engine Start Battery Generator Start Battery Thruster/Windlass Battery - 1300 Crank Amp Glass Mat Inverter - Xantrex 1000 Watt Battery Chargers(2) - Charles Model 5000, 60 Amp and 20 Amp Electrical Panels - 12VDC - Paneltronics 3204 with ammeter and voltmeter 110VAC - Paneltronics 3309 with ammeter and voltmeter Distribution(2) Paneltronics 3201 Battery Panel - Special Design with parallel switches and voltmeter Battery Monitor - Cockpit mounted for House and Main Engine Batteries All wiring replaced except cabin receptacles and cabin lighting circuits GFI installed on these circuits Complete wiring diagrams Bow Thruster - Lemar Model 185TT Voltmeter, fuses, and battery switch Battery - 1300 Crank Amp Glass Mat Battery Mounted below Sail Locker

Electronics and Navigational Equipment

Auto Pilot - Benmar PHC220 with remote control, gimbale mounted compass and chain drive binnacle mounted drive motor. GPS - Garmin 3210 with charts of all USA Radar Garmin GMR-41, Radome mounted on Waltz Gimbal leveler Model L4M XM weather module Forward Looking Sonar, Interphase Model iScan V90 Digital Engine Gauges - Tach, Oil Pressure, Water Temp Standard Horizon Wind and Speed Log Stereo Radio with CD player TV Satellite Track Antenna - KVH C3 with Dish Receiver, and 19" TV in Aft Cabin. Boat is wired through out for TV Dell Computer with Keyboard, mouse, Swivel mounted Flat Screen over navigation station

Ground Tackle

Anchor Windlass - Lewmar "H" Series, with dual chain and rope on one side and rope gypsy on

the other Main Anchor – Monson 41# with 25' of chain and 250' of rode Second Forward Anchor – Bruce 44# with 20' of chain and 225' of rode Aft Anchor – Fortress with 25' of chain and 125 of rode

Deck Equipment

(2) Restored Cargo Hatches along with 5 other hatches 19 port holes – 14 are bronze units Hardtop over Cockpit, 316SS frame covered by fiberglass and acrylic window over helm Hardtop completed isolated with curtains with windows and screens Boom Gallows – Teak and SS Aft Mounted Antenna Tower – welding 316SS tubing, with KVH C3 TV satellite tracking antenna, VHF antenna for back up radio, Weather Station, Wi-Fi external antenna, (2) GPS Antenna, XM Weather Antenna Dinghy Davits - 150# Stern Mounted Dinghy - Brig 10'6" Dinghy Engine Davit located in aft lazarette which mounts to aft life rail Side stanchions w/lifelines Dock Lines and Fenders Coast Guard Safety Package

Hull

Solid Fiberglass Full Displacement Hull with modified full keel and Brewer Cut. Rudder supported by skeg with two bearing points, wire steering Complete bottom job including sandblasting to clean good glass. Filled with Pettit epoxy paint, smoothed and sanded Coated with Belzona Superglide, a \$9,000 coating New Cutlass bearing and new prop shaft – 2007

Исключения

При продаже яхты исключаются личные вещи владельца.

Отказ от ответственности

Компания предоставляет описание судна или яхты добросовестно, но не может гарантировать точность этой информации, а также не ручается за техническое состояние. Покупатель должен проинструктировать своих агентов или оценщиков исследовать представленную информацию более подробно, по собственному желанию. Продажа судна или яхты, изменение цены или снятие с продажи будет происходить без предварительного уведомления.

ФОТОГРАФИИ

Stern and custom hardtop



Enclosed Cockpit



easy maintenance fiberglass decks



Bow with windlass and anchor platform



Main Salon facing forward



Salon facing aft



Salon facing companionway



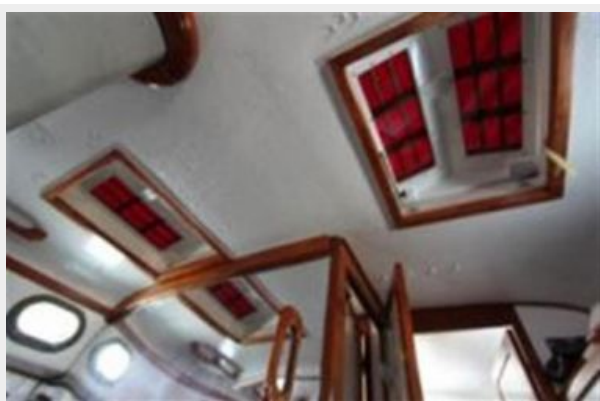
detail of one of classic main salon hatches



Galley with hatch above



one of mutiple salon overhead hatches



refrigerator and electrical



Master aft facing stern



Nav station in Master



Forward guest cabin



Forward hanging locker



additional storage by hanging locker forward



head next to separate shower forward



separate stall shower



bilge view



2009 Mainsail Stack Pack



New mainsail



Rig view to masthead



КОНТАКТЫ

Андрей Шестаков (Andrey Shestakov) – ведущий яхтенный брокер отдела продаж яхт и судов компании Shestakov Yacht Sales Inc. Официальный представитель Shestakov Yacht Sales Inc. для русскоговорящих клиентов в центральном офисе компании в Майами/Форт Лодердейл/Флорида/США.

Контактная информация

Email: **andrey@shestakovyachtsales.com**

Web: shestakovyachtsales.com

Телефоны

Краснодарский край: **+7(918)465-66-44**

США, Майами, Флорида: **+1(954)274-4435**

Время работы

Понедельник – Суббота: **9:00 - 21:00**
EDT

Воскресенье: **Закрито**

Адрес



Harbour Towne Marina, 850 NE 3rd St,
STE 213, Dania, FL 33004