

ALL OCEAN YACHTS 90' STEEL — ALL OCEAN YACHTS



Builder: ALL OCEAN YACHTS

Year Built: 2026

Model: expedition yacht

Price: \$9,500,000 USD

Location: Brazil

LOA: 90' (27.43mm)

Beam: 24.66

Min Draft: 7' 4" (2.24mm)

Max Draft: 8' (2.44mm)

Cruise Speed: 10 Knots Kts. (12 MPH)

Max Speed: 13 Knots Kts. (15 MPH)

Our experienced yacht broker, Andrey Shestakov, will help you choose and buy a yacht that best suits your needs **All Ocean Yachts 90' Steel — ALL OCEAN YACHTS** from our catalogue. Presently, at Shestakov Yacht Sales Inc., we have a wide variety of yachts available on our sale's list. We also work in close contact with all the big yacht manufacturers from all over the world.

If you would like to buy a yacht **All Ocean Yachts 90' Steel — ALL OCEAN YACHTS** or would like help answering any questions concerning purchasing, selling or chartering a yacht, please call **+1(954)274-4435**

TABLE OF CONTENTS

| | |
|------------------------------|----|
| TABLE OF CONTENTS | 2 |
| SPECIFICATIONS | 4 |
| Overview | 4 |
| Basic Information | 4 |
| Dimensions | 4 |
| Speed, Capacities and Weight | 4 |
| Accommodations | 5 |
| Hull and Deck Information | 5 |
| Engine Information | 5 |
| PHOTOS | 6 |
| Cutway View | 6 |
| Profile | 6 |
| Beach Shot | 8 |
| Flybridge | 8 |
| Flybridge | 8 |
| Flybridge | 9 |
| Flybridge | 9 |
| Top Front | 9 |
| Top side | 9 |
| Flybridge full view | 9 |
| Flybridge full view | 9 |
| Stairs | 10 |
| Master Head Sinks | 10 |
| CONTACTS | 11 |
| Contact details | 11 |
| Telephones | 11 |
| Office hours | 11 |
| Address | 11 |

SPECIFICATIONS

Overview

New construction, can be built at several yards around the world, Build time 24 months: can also be built in Fiberglass

Basic Information

Category: expedition yacht

Sub Category: Expedition or Explorer

Model Year: 2026

Year Built: 2026

Country: Brazil

Dimensions

LOA: 90' (27.43mm)

LWL: 78' (23.77mm)

Beam: 24.66

Min Draft: 7' 4" (2.24mm)

Max Draft: 8' (2.44mm)

Speed, Capacities and Weight

Cruise Speed: 10 Knots Kts. (12 MPH)

Cruise Speed Range: 4000

Max Speed: 13 Knots Kts. (15 MPH)

Water Capacity: 3000 Gallons

Holding Tank: 854 Gal Gallons

Fuel Capacity: 9800 Gal Gallons

Fuel Consumption: 2 Gal Gallons

Accommodations

Total Cabins: 4

Total Berths: 6

Sleeps: 10

Total Heads: 8

Crew Cabin: 4

Crew Berths: 4

Crew Heads: 2

Hull and Deck Information

Hull Material: Steel

Deck Material: Steel

Hull Configuration: Full Displacement

Exterior Designer: Luiz deBasto

Interior Designer: Luiz deBasto

Engine Information

Engines: 2

Manufacturer: Caterpillar

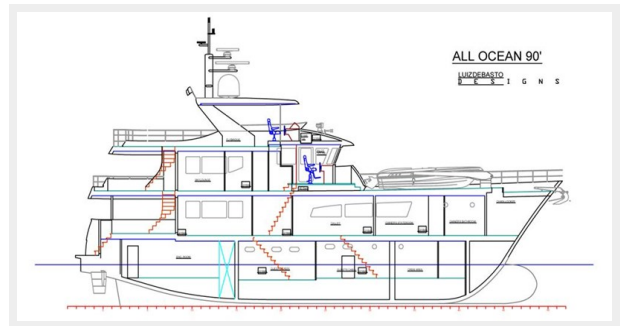
Engine Type: Inboard

Fuel Type: Diesel

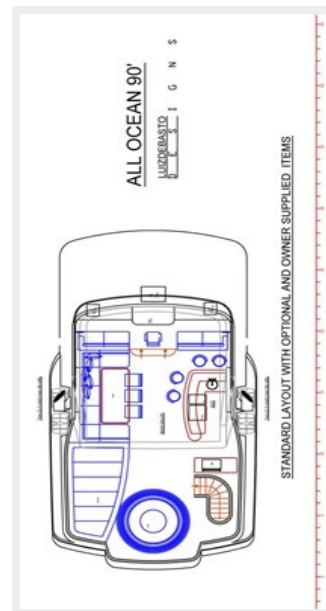
PHOTOS

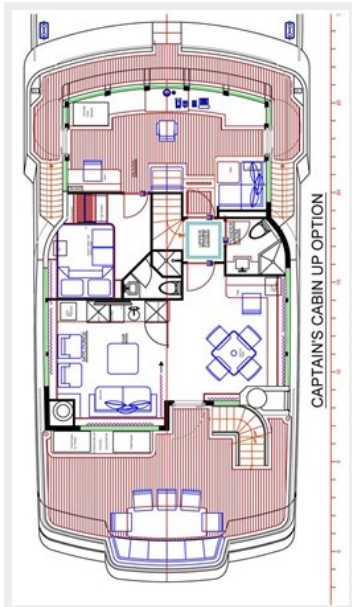
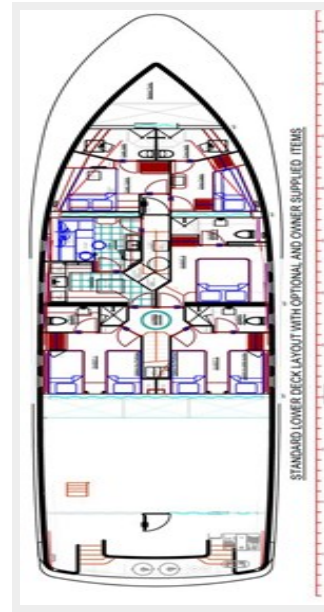
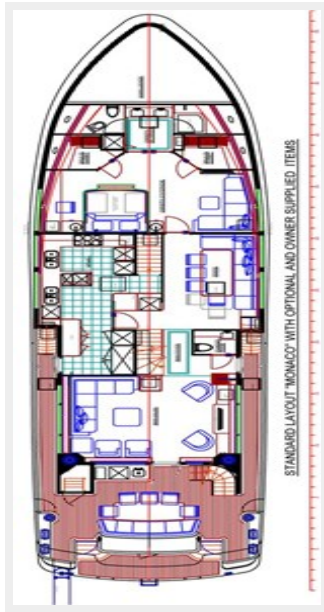


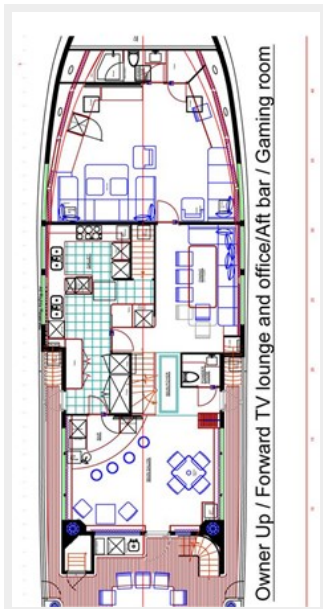
Cutway View



Profile







Beach Shot



Flybridge



Flybridge



Flybridge



Flybridge



Top Front



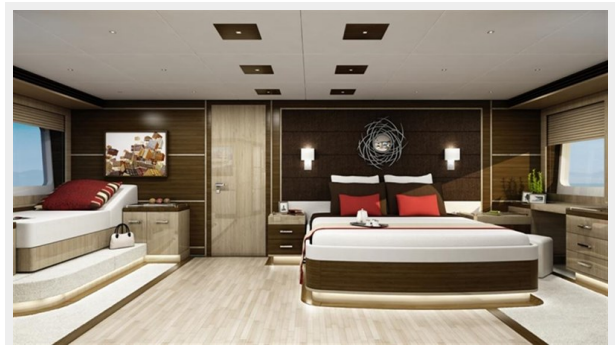
Top side



Flybridge full view

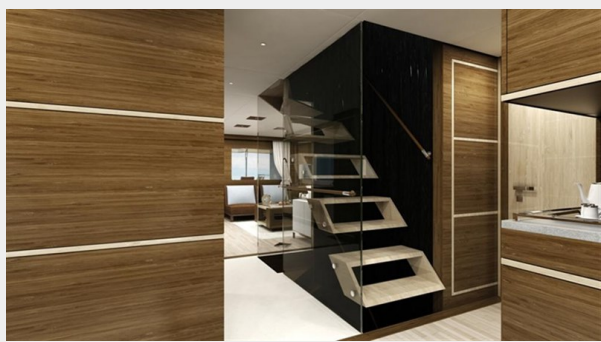


Flybridge full view

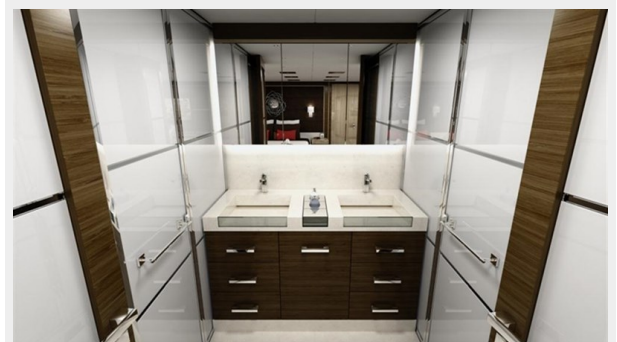




Stairs



Master Head Sinks



CONTACTS

Andrey Shestakov, leading yacht broker of the sales department of Shestakov Yacht Sales Inc. Shestakov Yacht Sales Inc., the official representative of the Miami/Fort Lauderdale FL headquarters.

Contact details

Email: andrey@shestakovyachtsales.com

Web: shestakovyachtsales.com/en/

Telephones

USA: +1(954)274-4435

Office hours

Monday – Saturday: **9:00 - 21:00** EDT

Sunday: **closed**

Address



Harbour Towne Marina, 850 NE 3rd St,
STE 213, Dania, FL 33004