

# ALL OCEAN YACHTS 100' FIBERGLASS — ALL OCEAN YACHTS



**Builder:** ALL OCEAN YACHTS

**Year Built:** 2026

**Model:** expedition yacht

**Price:** \$10,500,000 USD

**Location:** China

**LOA:** 100' (30.48mm)

**Beam:** 24.66

**Min Draft:** 7' 4" (2.24mm)

**Max Draft:** 8' (2.44mm)

**Cruise Speed:** 10 Knots Kts. (12 MPH)

**Max Speed:** 13 Knots Kts. (15 MPH)

Our experienced yacht broker, Andrey Shestakov, will help you choose and buy a yacht that best suits your needs **All Ocean Yachts 100' Fiberglass — ALL OCEAN YACHTS** from our catalogue. Presently, at Shestakov Yacht Sales Inc., we have a wide variety of yachts available on our sale's list. We also work in close contact with all the big yacht manufacturers from all over the world.

If you would like to buy a yacht **All Ocean Yachts 100' Fiberglass — ALL OCEAN YACHTS** or would like help answering any questions concerning purchasing, selling or chartering a yacht, please call **+1(954)274-4435**

---

# TABLE OF CONTENTS

---

TABLE OF CONTENTS	2
SPECIFICATIONS	3
Overview	3
Basic Information	3
Dimensions	3
Speed, Capacities and Weight	3
Accommodations	4
Hull and Deck Information	4
Engine Information	4
PHOTOS	5
Updated Main Profile	6
Updated Flybridge/Wheelhouse	6
Updated Main Deck/Lower Deck	6
Master Head sinks	7
Dining looking starboard	7
Stairs	7
CONTACTS	8
Contact details	8
Telephones	8
Office hours	8
Address	8

---

# SPECIFICATIONS

---

## Overview

---

New constructions; 24 months to build: can also be built in steel.

## Basic Information

---

**Category:** expedition yacht

**Sub Category:** Expedition or Explorer

**Model Year:** 2026

**Year Built:** 2026

**Country:** China

## Dimensions

---

**LOA:** 100' (30.48mm)

**LWL:** 88' (26.82mm)

**Beam:** 24.66

**Min Draft:** 7' 4" (2.24mm)

**Max Draft:** 8' (2.44mm)

## Speed, Capacities and Weight

---

**Cruise Speed:** 10 Knots Kts. (12 MPH)

**Cruise Speed Range:** 4000

**Max Speed:** 13 Knots Kts. (15 MPH)

**Water Capacity:** 3000 Gallons

**Holding Tank:** 854 Gal Gallons

**Fuel Capacity:** 9800 Gal Gallons

**Fuel Consumption:** 2 Gal Gallons

---

## Accommodations

---

**Total Cabins:** 5

**Sleeps:** 10

**Total Heads:** 6

**Crew Cabin:** 4

**Crew Berths:** 4

**Crew Heads:** 2

---

## Hull and Deck Information

---

**Hull Material:** Fiberglass

**Deck Material:** Fiberglass

**Hull Configuration:** Displacement w/  
Bulbous Bow

**Exterior Designer:** Luiz deBasto

**Interior Designer:** Luiz deBasto

---

## Engine Information

---

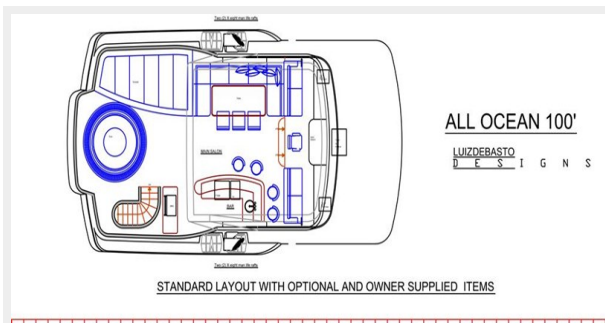
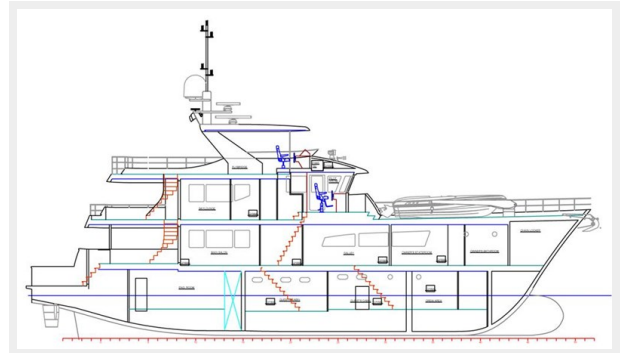
**Engines:** 2

**Manufacturer:** Caterpillar

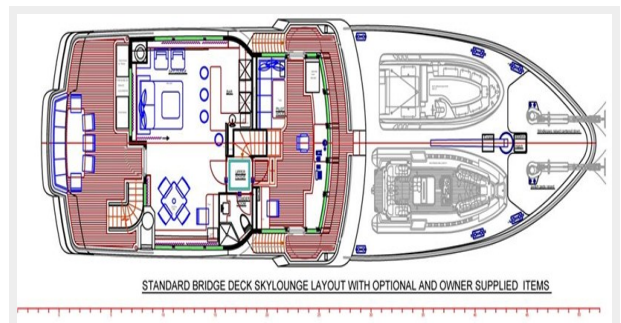
**Engine Type:** Inboard

**Fuel Type:** Diesel

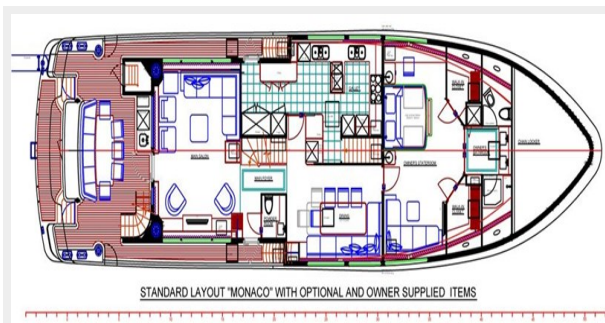
# PHOTOS



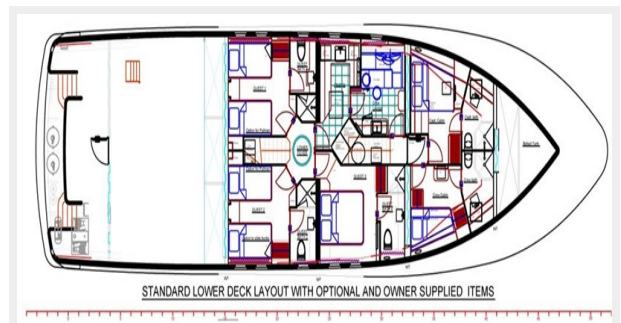
STANDARD LAYOUT WITH OPTIONAL AND OWNER SUPPLIED ITEMS



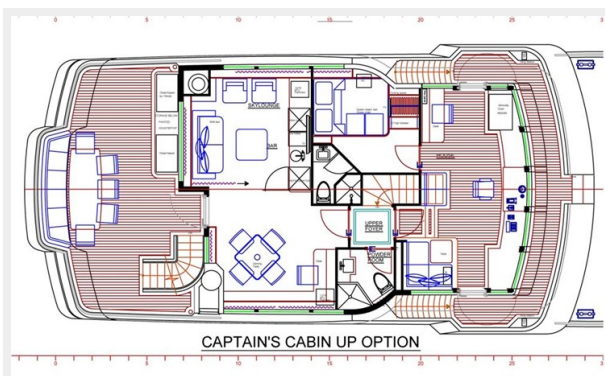
STANDARD BRIDGE DECK SKYLounge LAYOUT WITH OPTIONAL AND OWNER SUPPLIED ITEMS



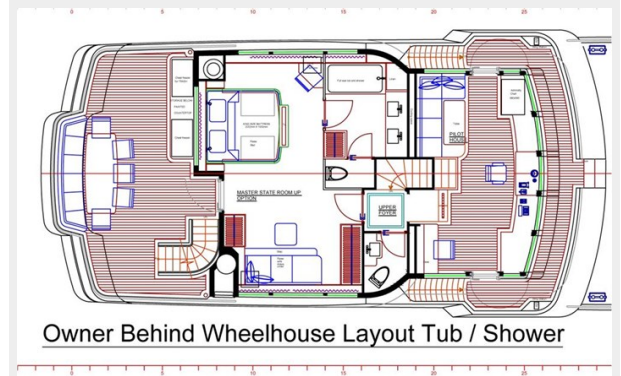
STANDARD LAYOUT 'MONACO' WITH OPTIONAL AND OWNER SUPPLIED ITEMS



STANDARD LOWER DECK LAYOUT WITH OPTIONAL AND OWNER SUPPLIED ITEMS

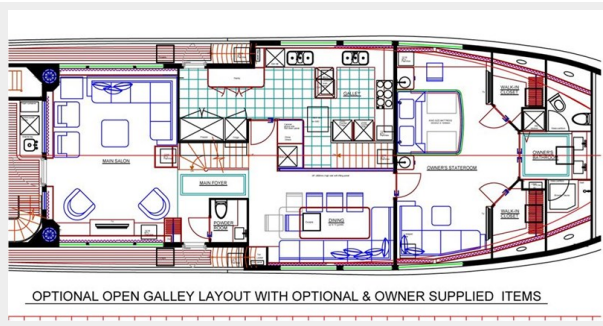


CAPTAIN'S CABIN UP OPTION

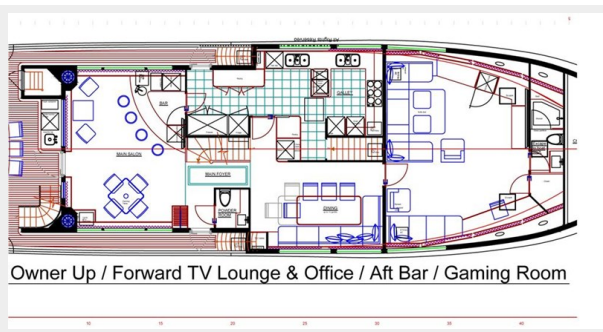


Owner Behind Wheelhouse Layout Tub / Shower

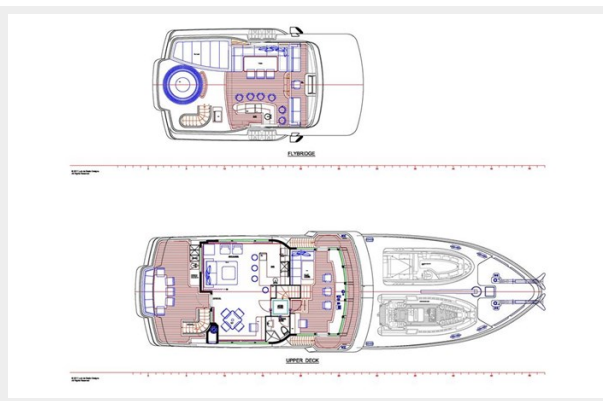




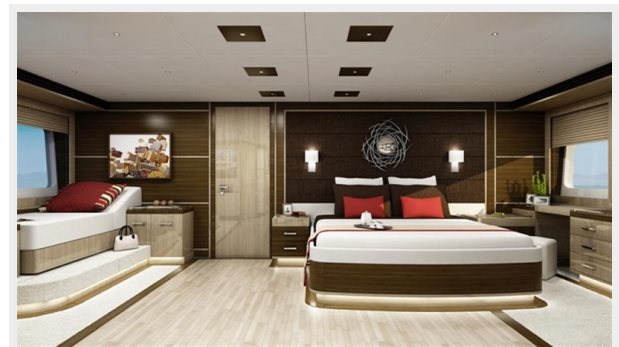
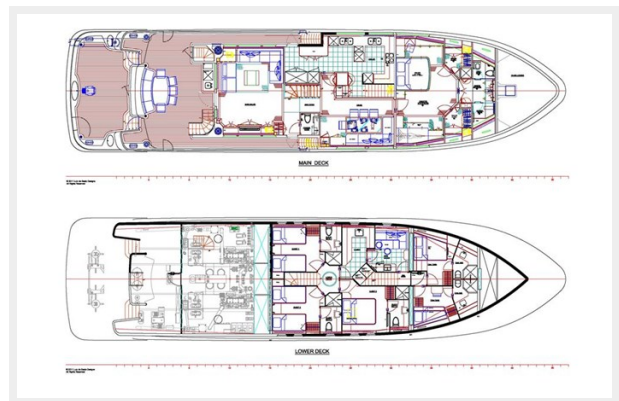
### Updated Main Profile



### Updated Flybridge/Wheelhouse



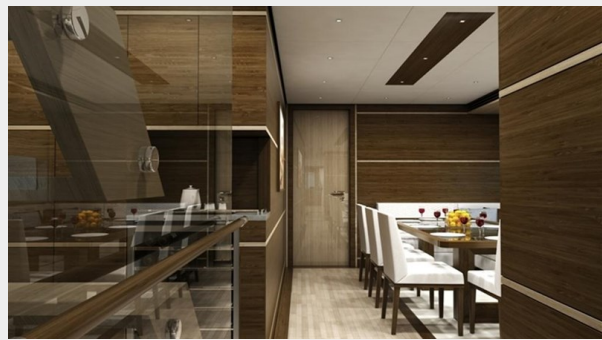
### Updated Main Deck/Lower Deck



### Master Head sinks



### Dining looking starboard



### Stairs



# CONTACTS

---

Andrey Shestakov, leading yacht broker of the sales department of Shestakov Yacht Sales Inc. Shestakov Yacht Sales Inc., the official representative of the Miami/Fort Lauderdale FL headquarters.

## Contact details

---

Email: [andrey@shestakovyachtsales.com](mailto:andrey@shestakovyachtsales.com)

Web: [shestakovyachtsales.com/en/](http://shestakovyachtsales.com/en/)

## Telephones

---

USA: +1(954)274-4435

## Office hours

---

Monday – Saturday: **9:00 - 21:00** EDT

Sunday: **closed**

## Address

---



Harbour Towne Marina, 850 NE 3rd St,  
STE 213, Dania, FL 33004