

BARONESS — CRESCENT



Builder: CRESCENT

Year Built: 1991

Model: Motor Yacht

Price: PRICE ON APPLICATION

Location: United States

LOA: 105' 1" (32.03m)

Beam: 24' 0" (7.32m)

Min Draft: 0' 0" (0.00m)

Max Draft: 6' 0" (1.83m)

Cruise Speed: 14 Kts. (16 MPH)

Max Speed: 20 Kts. (23 MPH)

Our experienced yacht broker, Andrey Shestakov, will help you choose and buy a yacht that best suits your needs **BARONESS — CRESCENT** from our catalogue. Presently, at Shestakov Yacht Sales Inc., we have a wide variety of yachts available on our sale's list. We also work in close contact with all the big yacht manufacturers from all over the world.

If you would like to buy a yacht **BARONESS — CRESCENT** or would like help answering any questions concerning purchasing, selling or chartering a yacht, please call **+1(954)274-4435**

TABLE OF CONTENTS

TABLE OF CONTENTS	2
SPECIFICATIONS	5
Basic Information	5
Dimensions	5
Speed, Capacities and Weight	5
Accommodations	6
Hull and Deck Information	6
Engine Information	6
DETAILED INFORMATION	7
Accommodations	7
Aft deck	7
Crew Quarters	7
Deck Equipment	7
Pilothouse Electronics & Equipment	8
Galley	8
VIP Guest Stateroom	8
Guest Stateroom, Port	9
Guest Stateroom Starboard	9
Master Stateroom	9
Remarks	9
Exclusions	9
Disclaimer	9
PHOTOS	11
DECK	11
DECK	11
DECK	11
DECK	11
FLYBRIDGE	11

AFT DECK	11
AFT DECK	12
AFT DECK	12
PILOTHOUSE	12
PILOTHOUSE	12
PILOTHOUSE	12
PILOTHOUSE	12
PILOTHOUSE	13
PILOTHOUSE	13
SALON	13
SALON	13
SALON	13
SALON	13
SALON	14
GUEST STATEROOM	14
GUEST STATEROOM	14
GUEST HEAD	14
GUEST HEAD	15
HALL BETWEEN STATEROOMS	15
GUEST STATEROOM	15
GUEST HEAD	15
MASTER STATEROOM	16
MASTER STATEROOM	16
MASTER HEAD	16
DAY HEAD	16
STAIRWAY TO STATEROOMS	17
HALL	17
DINING	17
DINING	17

GALLEY	18
GALLEY	18
GALLEY	18
GALLEY	18
GALLEY	18
ENGINE ROOM	18
ENGINE ROOM	19
ENGINE ROOM	19
ENGINE ROOM	19
WORKSHOP	19
ENGINE ROOM	20
CONTACTS	21
Contact details	21
Telephones	21
Office hours	21
Address	21

SPECIFICATIONS

Basic Information

Category: Motor Yacht

Sub Category: Raised Pilothouse

Model Year: 1991

Year Built: 1991

Refit Year: 2005

Country: United States

Fly Bridge: Yes

Dimensions

LOA: 105' 1" (32.03m)

LWL: 100' 0" (30.48m)

LOD: 0' 0" (0.00m)

Beam: 24' 0" (7.32m)

Min Draft: 0' 0" (0.00m)

Max Draft: 6' 0" (1.83m)

Clearance: 0' 0" (0.00m)

MFG Length: 105' 0" (32.00m)

Speed, Capacities and Weight

Cruise Speed: 14 Kts. (16 MPH)

Cruise Speed RPM: 1 Kts.

Cruise Speed Range: 1

Max Speed: 20 Kts. (23 MPH)

Max Speed RPM: 1 Kts.

Max Speed Range: 1 Kts.

Gross Tonnage: 1 Pounds

Holding Tank: 132 Gallons

Fuel Capacity: 3500 Gallons

Fuel Consumption: 1 Gallons

Accommodations

Total Cabins: 4

Total Berths: 4

Sleeps: 8

Total Heads: 5

Crew Cabin: 3

Crew Berths: 4

Crew Sleeps: 4

Crew Heads: 1

Hull and Deck Information

Hull Material: Fiberglass

Hull Color: White

Hull Designer: jack sarin

Engine Information

Engines: 2

Manufacturer: Detroit Diesel

Model: 12V 92

Engine Type: Inboard

Fuel Type: Diesel

DETAILED INFORMATION

Accommodations

NOT OFFERED FOR SALE TO US RESIDENTS WHILE IN US WATERS

Main Salon • Full beam salon w/ 7' headroom • Maple joinery & cabinets throughout • Custom marble wet bar w/ 3 swivel stools, Kitchen Aid icemaker, U-line refrigerator, sink & storage • Entertainment center w/Hitachi 36" TV, Sony DVD/VCR, Kenwood KR-V8080 surround sound stereo & 4 Paradigm speakers • L-shaped upholstered sofa • (2) Leather chairs w/ottomans & marble end table • Custom cherry & stainless coffee table • Custom window treatments w/duevete blinds • Built-in maple credenza & sideboards • Custom Pictorial Bogonrerif bevel glass doors • Custom Berber carpet throughout ('07) Day Head: • Marble flooring • Custom Shery Wagner sink & fixtures • Mirrored wall panels Dining Salon • Formal dining table w/frosted glass table top & maple pedestal base • (8) Upholstered dining chairs • Built-in buffet w/custom storage for china, stemware & silverware • Custom overhead soffit • Custom wallcovering • Custom double entry doors w/etched glass

Aft deck

Aft Deck • Custom L-shaped upholstered seating • Table w/stainless steel pedestals • (2) Teak chairs w/cushions • (2) Teak lounge chairs w/ottomans & cushions • Custom cabinet w/Lynx grill, Sub-Zero refrigerator & Kitchen Aide icemaker • New carpeting '05

Crew Quarters

Crew Quarters • Captains cabin w/double berth, Panasonic 19" LCD, hanging locker, & private • Head w/shower & vanity • Cabin w/double berth, Panasonic 13" TV/VCR & hanging locker • Cabin w//twin berths, head, shower & Panasonic 13" TV/VHS • Crew lounge w/U-line fridge, coffee maker, Magic Chef microwave, sink & settee • Maytag washer & dryer

Deck Equipment

• Teak decks • Nautical Structure EZ2500 davit • Muir Windlass • Boarding gates, port & stbd. • (2) Anchors 90kg w/500' chain • Sun pad, bow • Windshield washers/wipers • Custom extension & aft deck by Westship in '03 • Swim platform • Underwater lights (new '05) • Increased storage area aft of engine room • Freshwater wash down Recent Upgrades BARONESS has been continuously updated throughout the years and to follow is a few of the recent upgrades; • New paint 2004 • New teak decks 2007 • New interior upgrades; marble, stainless steel galley

appliances & carpeting '07 • Underwater lights 2007 • Frameless windows 2006 Safety & Fire Protection • Zodiac 20-man life raft • (50) Life jackets (50) • (3) Ring Buoys (3) • Cerberus fire alarm • Emergency steering • EPIRB 406 ACR • SART • Evac charts • Engine room escape hatch • Fire extinguishers throughout Electrical System • (2) Northern Lights 35 KW generators (Port:10,416 hrs / Stbd:10,383 hrs) • 24v DC electrical power • 110v/220v AC electrical power • (8) New Batteries • Battery parallel switch • Battery charger, automatic • Dual house battery system w/emergency backup • Dual 100 amp shore power, 100' cables Engine/Mechanical Equipment • (2) Sea Recovery 800 GPD watermakers • Bow thruster 65hp w/variable speed • Naiad Pros stabilizers • Racor 1000 fuel filters • Hydraulic dual PTO steering • Air conditioning • Bilge pump • Cooling pumps • Emergency pump, hydraulic-electric • Emergency stop • Fuel shut-off valve • Lube oil transfer system • Lube tank, 40 gallons • Perko raw water sea strainer • Spare propellers • Prop removal equipment • Sanitation system - 500 gal holding tank • (2) Water pressure pumps • (2) Hot water tanks • Diamond plate flooring • Under deck storage

Pilothouse Electronics & Equipment

• Furuno 1832 72-mile black box Radar w/ARPA & Envison 17" LCD screen • Simrad AP 25 Autopilot • Northstar 951X GPS • Furuno digital compass • (2) Magnetic compass • Raytheon 420 hailer • B&G wind/speed/depth • Icom M800 SSB • Icom M45 VHF • KVH DDS Sat TV • Sat A Sat Com system • Sony computer • (2) Proview 15" LCD screens • Envison 17" LCD • Sylvania 37" LCD TV • Brothers 210 fax Flybridge Electronics • Furuno 1251 Radar • Furuno FCV 600L color sounder • Furuno navigation system • Robertston F200 Autopilot remote • (2) ACR RCL-100 searchlights • (2) Wing stations w/thruster & jog steering • ACR 406 EPIRB • B&G wind/speed/depth • Icom M45 VHF Flybridge Equipment • Upholsterd L-shaped seating, port & stbd • Table w/stainless steel adjustable base • Wet bar w/sink, U-Line refrigerator & storage • (2) Popmpanette helm chairs • Hot tub (removable soft tub) • (2) Sea Doo GS waverunners • 12' Zodiac tender w/65 HP 4-stroke O/B • Ocean kayak

Galley

• GE Profile refrigerator/freezer • GE Monogram dishwasher • (2) Add'l Sub Zero freezers • GE Monogram 5-burner stovetop • (2) GE Monogram commercial convection oven • GE Profile spacemaker 30" microwave • GE Monogram trash compactor • Granite countertop • Panasonic 13" LCD TV

VIP Guest Stateroom

• Queen size berth w/custom spread & shams • Built-in maple nightstand, dresser w/vanity & storage lockers • Hanging locker • (2) Reading lights • Mirrored bulkhead • Entertainment system w/Quasar TV/VCR & Panasonic stereo • Private bath w/shower, Amitico flooring & corian countertop

Guest Stateroom, Port

• Queen size berth w/custom spread & shams • Built-in maple nightstand & dresser w/vanity & mirror • Hanging locker • (2) Reading lights • Entertainment system w/ Panasonic TV/VCR & Sony stereo • Private bath w/shower, Amtico flooring, Corian countertop & Sheryl Wagner sink

Guest Stateroom Starboard

• Queen size berth w/custom spread & shams • Built-in maple nightstand, dressers & vanity • Mirrored bulkhead • Hanging locker • (2) Reading lights • Entertainment system w/Panasonic TV/VCR & Sony stereo

Master Stateroom

• Queen berth w/custom spread & shams • Built-in maple nightstands, vanity & dresser w/storage lockers • Mirrored bulkhead • Walk-in cedar lined closet • (2) Swing arm reading lights • Entertainment system w/Samsung 32" LCD TV & Sony DVD/VHS • Panasonic stereo • Custom window treatments w/pleated drop blinds • Private Head, shower, Corian vanity countertop, Amtico flooring, custom sink & fixtures

Remarks

New teak and non-skid

Frameless windows installed in 2008

New rigid bimini

House painted in 2008

New electronics package

New top ends on the engines in the last three years

Exclusions

Owner's personal belongings.

Disclaimer

The Company offers the details of this vessel or yacht in good faith but cannot guarantee or

warrant the accuracy of this information nor warrant the condition of the vessel. A buyer should instruct his representatives, agents, or his surveyors, to investigate such details as the buyer desires validated. This vessel or yacht is offered subject to prior sale, price change, or withdrawal without notice.

PHOTOS

DECK



DECK



DECK



DECK



FLYBRIDGE



AFT DECK



AFT DECK



AFT DECK



PILOTHOUSE



PILOTHOUSE



PILOTHOUSE



PILOTHOUSE



PILOTHOUSE



PILOTHOUSE



SALON



SALON



SALON



SALON



SALON



GUEST STATEROOM



GUEST STATEROOM



GUEST HEAD



GUEST HEAD



HALL BETWEEN STATEROOMS



GUEST STATEROOM



GUEST HEAD



MASTER STATEROOM



MASTER STATEROOM



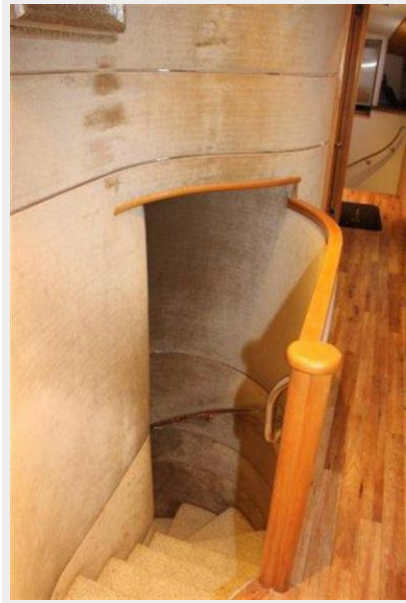
MASTER HEAD



DAY HEAD



STAIRWAY TO STATEROOMS



HALL



DINING



DINING



GALLEY



GALLEY



GALLEY



GALLEY



GALLEY



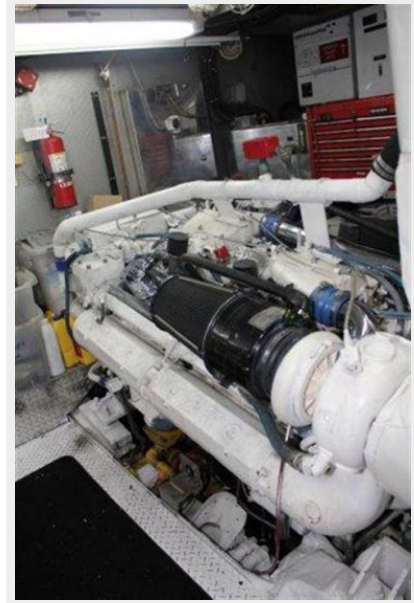
ENGINE ROOM



ENGINE ROOM



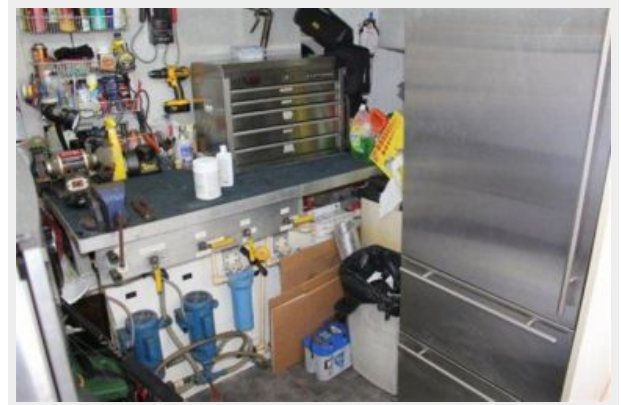
ENGINE ROOM



ENGINE ROOM



WORKSHOP



ENGINE ROOM



CONTACTS

Andrey Shestakov, leading yacht broker of the sales department of Shestakov Yacht Sales Inc. Shestakov Yacht Sales Inc., the official representative of the Miami/Fort Lauderdale FL headquarters.

Contact details

Email: andrey@shestakovyachtsales.com

Web: shestakovyachtsales.com/en/

Telephones

USA: +1(954)274-4435

Office hours

Monday – Saturday: **9:00 - 21:00** EDT

Sunday: **closed**

Address



Harbour Towne Marina, 850 NE 3rd St,
STE 213, Dania, FL 33004