

UNCLE T — BUDDY DAVIS



Builder: BUDDY DAVIS

Year Built: 1987

Model: Sport Fisherman

Price: PRICE ON APPLICATION

Location: United States

LOA: 47' 0" (14.33m)

Beam: 16' 0" (4.88m)

Max Draft: 4' 0" (1.22m)

Cruise Speed: 29 Kts. (33 MPH)

Max Speed: 35 Kts. (40 MPH)

Our experienced yacht broker, Andrey Shestakov, will help you choose and buy a yacht that best suits your needs **Uncle T — BUDDY DAVIS** from our catalogue. Presently, at Shestakov Yacht Sales Inc., we have a wide variety of yachts available on our sale's list. We also work in close contact with all the big yacht manufacturers from all over the world.

If you would like to buy a yacht **Uncle T — BUDDY DAVIS** or would like help answering any questions concerning purchasing, selling or chartering a yacht, please call **+1(954)274-4435**

TABLE OF CONTENTS

TABLE OF CONTENTS	2
SPECIFICATIONS	3
Basic Information	3
Dimensions	3
Speed, Capacities and Weight	3
Hull and Deck Information	3
Engine Information	3
DETAILED INFORMATION	4
Introduction	4
Accommodations	4
Galley / Salon	4
Deck	4
Electronics	5
Cockpit	5
Additional	6
Exclusions	6
Disclaimer	6
PHOTOS	7
CONTACTS	11
Contact details	11
Telephones	11
Office hours	11
Address	11

SPECIFICATIONS

Basic Information

Category: Sport Fisherman

Model Year: 1987

Year Built: 1987

Country: United States

Dimensions

LOA: 47' 0" (14.33m)

Beam: 16' 0" (4.88m)

Max Draft: 4' 0" (1.22m)

Speed, Capacities and Weight

Cruise Speed: 29 Kts. (33 MPH)

Max Speed: 35 Kts. (40 MPH)

Displacement: 45000 Pounds

Water Capacity: 100 Gallons

Fuel Capacity: 740 Gallons

Hull and Deck Information

Hull Material: Fiberglass

Engine Information

Engines: 2

Manufacturer: Daewoo

Model: Diesel

Engine Type: Inboard

Fuel Type: Diesel

DETAILED INFORMATION

Introduction

WINNER OF THE MID-ATLANTIC \$500 TOURNAMENT WHITE MARLIN 88LBS 2006.

The legendary Buddy Davis, this one was repowered with 10 Cylinder Daewoo's 820hp and cruises at an economical 27kts and burns approximately 48gph. The 820Hp Daewoo is commercially rated for 10,000 hours. Excellent repower makes this 47' Davis the fastest on the market and has unmatched range. She is captain maintained and is truly turn key!!! Proven Tournament Winner!!! Awlgrippped engine room, 2007 3 sided enclosure, and more.

Seller will entertain all offers and possible trades!

Accommodations

Two stateroom two head layout. Master is forward with a queen berth with storage below. TV/VCR. Two hanging lockers, drawer storage, AC/ Heat, private head with stall shower. Crew stateroom to port offers cris-cross bunks, storage and AC/Heat. The crew head and shower is to starboard.

Galley / Salon

Salon offers an L-shaped couch to stbd with storage below and a pullout bed. To port is another couch. TV/VCR, Stereo/CD, Galley is up and features new subzero refrigeration and freezer 2004. Genair, Microwave, SS sink, plenty of storage, and a 5 gallon insta-hot. U-line icemaker

Deck

- Teak Transom
- Teak Deck
- Teak Covering Boards New 2005
- Teak tow rail Fresh Varnish 2005
- Bow rail and pulpit
- 8 Man life raft
- Under gunnel storage
- Pipewelders tuna tower
- Quartz Lights
- 6 Rod Rocket Launcher
- 3 Side enclosure

Electronics

- NorthStar 951
- Icom VHF
- Simrad AP-22
- Furuno Radar 1941 64Mi 6kw
- Furuno T-2000 Digital Sea Temp
- SEA322 SSB w/2 Heads Salon/Bridge
- Garmin GPS
- Bluewater Helm Chair
- Center Helm, Port and Starboard Bench seats

Cockpit

- Cockpit Freezer
- Cockpit Sink
- Tackle Locker
- Scoponich fighting chair w/teak back and rocket launcher.
- Scoponich 4 rod rocket launcher
- 4 rod holders
- 2 rod holders welded to tower legs
- In deck fish box with macerator
- In deck Livewell
- Transom door

Additional

- Repower 2002 820hp Daewoo's
- Freshly Awlgripped engine room
- Fresh water pump 2005
- Center helm with port and STBD bench seats
- Bluewater Helm Chair
- Carpets being installed
- 4 batteries with Century DC Charger
- 50 Amp shore power
- 4 Year old Northern Lights Generator 12kw
- GPIRB and EPIRB
- 40lb anchor 600'rode 30'chain
- Halon
- 6 Rule 2000 Bilge pumps
- High water alarms
- Interior being revarnished
- Trolling valves available

Exclusions

Owner's personal belongings.

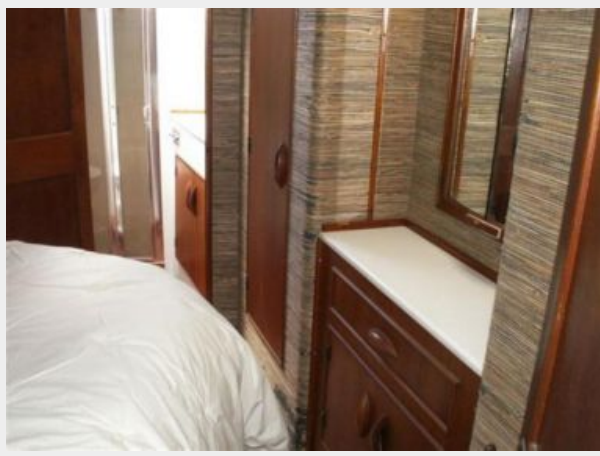
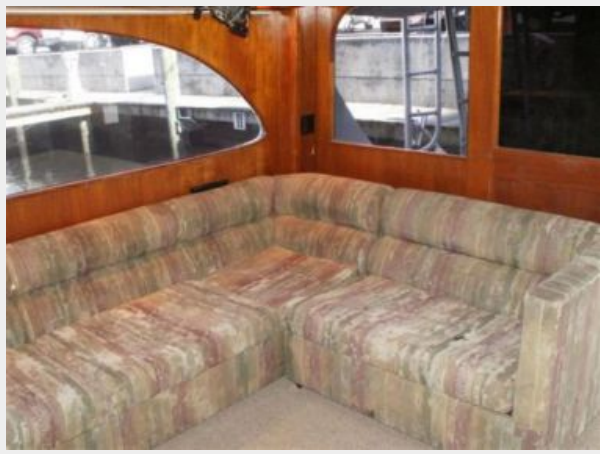
Disclaimer

The Company offers the details of this vessel or yacht in good faith but cannot guarantee or warrant the accuracy of this information nor warrant the condition of the vessel. A buyer should instruct his representatives, agents, or his surveyors, to investigate such details as the buyer desires validated. This vessel or yacht is offered subject to prior sale, price change, or withdrawal without notice.

PHOTOS









CONTACTS

Andrey Shestakov, leading yacht broker of the sales department of Shestakov Yacht Sales Inc. Shestakov Yacht Sales Inc., the official representative of the Miami/Fort Lauderdale FL headquarters.

Contact details

Email: andrey@shestakovyachtsales.com

Web: shestakovyachtsales.com/en/

Telephones

USA: +1(954)274-4435

Office hours

Monday – Saturday: **9:00 - 21:00** EDT

Sunday: **closed**

Address



Harbour Towne Marina, 850 NE 3rd St,
STE 213, Dania, FL 33004