

WHEELS — TRINITY



Судостроитель: TRINITY

Год постройки: 2009

Модель: Моторная яхта

Цена: **ЦЕНА ЯХТЫ ПО ЗАПРОСУ**

Местонахождение: United States

Длина общая: 164' 0" (49.99m)

Ширина: 28' 0" (8.53m)

Макс. осадка: 8' 0" (2.44m)

Крейс. скорость: 17 Kts. (20 MPH)

Макс. скорость: 19 Kts. (22 MPH)

Купить **WHEELS — TRINITY** а также выбрать подходящую вам яхту из нашего каталога яхт вам поможет опытный яхтенный брокер Андрей Шестаков. На сегодняшний день компания **Shestakov Yacht Sales Inc.** имеет большое количество яхт в собственном списке продаж, а также тесно сотрудничает со всеми крупными яхтенными производителями по всему миру.

Для того чтобы купить яхту **WHEELS — TRINITY** а также проконсультироваться по любому вопросу связанному с покупкой, продажей, чартером яхт позвоните по телефону **+7(918)465-66-44**.

ОГЛАВЛЕНИЕ

ОГЛАВЛЕНИЕ	2
ХАРАКТЕРИСТИКИ	4
Основная информация	4
Размеры	4
Скорость, вместимость и масса	4
Размещение	4
Корпус и палуба	5
Информация о двигателе	5
ПОДРОБНОЕ ОПИСАНИЕ	6
MACHINERY	6
COMMUNICATION SYSTEMS	7
NAVIGATION	8
AUDIO & VIDEO EQUIPMENT	9
GALLEY & LAUNDRY EQUIPMENT	11
TENDERS & TOYS	12
DECK EQUIPMENT	12
FIREFIGHTING & SECURITY EQUIPMENT	13
EXCLUSIONS	13
ACCOMMODATIONS and LAYOUT	13
Исключения	14
Отказ от ответственности	14
ФОТОГРАФИИ	15
Main Salon	15
Dining Salon	15
Main Aft Deck	15
Galley	15
Master Stateroom Study	15
Master Stateroom	15

Master Bath	16
Master Bath	16
Guest Stateroom - Port King	16
Guest Stateroom - Starboard King	16
Guest Stateroom Bath - Starboard King	16
Guest Stateroom - Twin	16
Guest Stateroom Bath - Twin	17
Skylight	17
Skylounge	17
Skylounge	17
Guest Stateroom VIP Bath - Skylounge	17
Guest Stateroom VIP - Skylounge	17
Wheelhouse	18
Skylounge Aft Deck	18
Sun Deck Jacuzzi	18
Sun Deck	18
Bow	19
Tender Garage	19
КОНТАКТЫ	20
Контактная информация	20
Телефоны	20
Время работы	20
Адрес	20

ХАРАКТЕРИСТИКИ

Основная информация

Тип судна: Моторная яхта

Подкатегория: Tri-Deck

Модельный год: 2009

Год постройки: 2009

Страна: United States

Открытая палуба мостика: Да

Размеры

Длина общая: 164' 0" (49.99m)

Ширина: 28' 0" (8.53m)

Макс. осадка: 8' 0" (2.44m)

Скорость, вместимость и масса

Крейс. скорость: 17 Kts. (20 MPH)

Макс. скорость: 19 Kts. (22 MPH)

Вместимость воды: 2700 Gallons

Объем топливного бака: 16000 Gallons

Размещение

Всего кают: 6

Всего коек: 7

Спальные места: 12

Каюта капитана: Да

Каюты экипажа: 6

Койки экипажа: 8

Спальных мест экипажа: 9

Корпус и палуба

Материал корпуса: Aluminum

Материал палубы: Teak

Комплектация корпуса: Semi-Displacement

Цвет корпуса: White

Дизайнер экстерьера: Trinity Yachts

Дизайнер интерьера: Scott Carpenter

Информация о двигателе

Двигатели: 2

Производитель: Caterpillar

Модель: 3512B

Тип двигателя: Inboard

Тип топлива: Diesel

ПОДРОБНОЕ ОПИСАНИЕ

MACHINERY

Main Engines:

Engine Type: (2) Caterpillar 3512B @ 2,250 hp

Engine Hours: As of 11 Jan 11: Port 567; Stb 559

Main Eng Gearboxes: (2) Reintjes

Drive: (2) 5-blade Nibral

Speed Consumption / Range

Speed Fuel Consumption Range

10	39	3945
----	----	------

12	55	3357
----	----	------

16	123	2001
----	-----	------

18	181	1530
----	-----	------

Generators & Electricity

Generators: (2) 125 kW Kilopak @ 1800 RPM

Generator Hours: As of 11 Jan 11: Port 1528; Stb 1514

Shore Power: (1) 125 KVA liquid cooled ASea converter

Batteries

Main Engine Starting: 24VDC Battery Banks

Generator Starting: 24VDC Battery Banks

Air Conditioning:

Type: 45-ton Marine Air

Other Machinery

Watermakers: (2) 2,500 GPD each Watermakers, Inc.

Stabilizers: Quantum QC 1500 "At Rest"

Bow Thruster: Quantum Marine 27" hydraulic

Fuel Separator & Filtration: (1) Alpha Laval MAE-I03

Sewage System: Headhunter

Lube Oil Capacity 170 g (640 liters)

Waste Oil Capacity 280 g (1060 liters)

COMMUNICATION SYSTEMS

SATcom: Nera Fleet 55

VSat Seatel Wavecall 4006

Telephone System: Panasonic KX-TDA 200

VHF: Standard GX-5000 VHF Black (Helm)
Standard GX-3000 VHF Black (Crew Area)

Cellular Phone System: (2) Ericsson Dual Band GSM Cellular Phones

NAVIGATION

Radar: (1) Furuno FR2137SBB Band 30kW Color Radar
(1) Furuno FR2127BB X Band 25kW Color Radar

GMDSS (1) Furuno Sea Area A3 RC1815 System

GMDSS VHF Radios (1) MC Murdo R-1 H/H

SART Pains Wessex

EPIRB Pains Wessex Precision 406-GPS EPIRB Cat 1

Gyro Compass: (1) C-Plath Navigat-X MK11

Autopilot: (1) C-Plath Navipilot 4000

Echo Sounder: (1) Furuno FCV 1200BB Color Echo Sounder

Depth Sounder:	(1) Furuno RD 30 Depth Display (Control Room)
GPS:	(1) Northstar 6100i 6.4" (Helm)
	(1) Northstar 6100i 6.4" (Nav Station)
Ships Computer:	VEI Marci 3 Compact Mini PC (Pilothouse & Captain's Cabin)
Laser Plotter:	Chart Plotting Computer with Transas NS3000i
Wind/Speed Log:	B&G Hydra 3000 Cruise Pack
Navtex Receiver:	(1) Furuno NX700
AIS	(1) Furuno FA150

AUDIO & VIDEO EQUIPMENT

Crestron CONTROL SYSTEM

Comworld: PAL to NTSC SECAM video converter with Audio & Video processing. Makes European satellite receiver compatible with US TV.

Seatel 4004 Stabilized DSS TV System

VEI Sassy CCTV Color System

Main Salon (1) 60" Sat TV System

Main Aft Deck (1) 42" SharpAquos Plasma TV
Stereo System

Skylounge	(1) 52" TV
Upper Aft Deck	(1) 42" Sharp Aquos Flat Panel LCD TV
Sundeck	(1) 50" Plasma Sat TV
	(1) 42" Plasma TV with Kaleidescape
Master Stateroom	(1) Pioneer DVD Player
	Stereo
	(1) each 32" Sharp Aquos Plasma TV with Kaleidescape
VIP Stateroom #1 & #2	(1) each Pioneer DVD Player
	Stereo
Guest Stateroom King	(1) 32" Sharp Aquos Plasma TV with Kaleidescape
	(1) Pioneer DVD Player
	Stereo
Guest Stateroom Queen	(1) 32" Sharp Aquos Plasma TV with Kaleidescape
	(1) Pioneer DVD Player
	Stereo
Guest Stateroom Twin	(1) 20" Sharp Aquos Plasma TV with Kaleidescape
	(1) Pioneer DVD Player
	Stereo
Galley	(1) 20" Sharp Aquos Flat Panel LCD TV with built in tuner
Captain's Cabin	(1) 32" Sharp Aquos Flat Panel LCD TV

Engineer's Stateroom	(1) 20" Sharp Aquos LCD Flat Panel TV with built in tuner
Crew Lounge	(1) 32" Sharp Aquos Flat Panel LCD TV
Crew Qtrs #1	(2) 10.2" Dropdown TV/Video Monitor with built-in DVD Player, 6-channel FM Modulator, Satellite Radio Input, Remote Control
Crew Qtrs #2	(2) 10.2" Dropdown TV/Video Monitor with built-in DVD Player, 6-channel FM Modulator, Satellite Radio Input, Remote Control
Crew Qtrs #3	(2) 10.2" Dropdown TV/Video Monitor with built-in DVD Player, 6-channel FM Modulator, Satellite Radio Input, Remote Control
Crew Qtrs #4	(2) 10.2" Dropdown TV/Video Monitor with built-in DVD Player, 6-channel FM Modulator, Satellite Radio Input, Remote Control

Audio Equipment

Kaleidescape movie/music libraries operated by Crestron remote control system. Hundreds of titles with access in all staterooms and salons. iPod docking stations throughout the yacht X box

GALLEY & LAUNDRY EQUIPMENT

Cooking Equipment: Miele 6-burner oven and grill
Miele Double Convection Ovens

Refrigeration/Freezer: Artic Safe Walk- in

Laundry Equipment:

(2) Miele Washing Machines

Laundry Equipment (3) Miele Dryers

(1) Roller iron

TENDERS & TOYS

Tenders: 17' Wide Body rescue boat w/115 hp Yamaha
20' Nautica

Dive Gear: (6) sets of SCUBA gear

Wave Runner(s): (2) 2008 Yamaha VX Deluxe 3-seater Wave Runners

Other: Elliptical machine on upper aft deck

DECK EQUIPMENT

Anchor Windlass: (2) Vertical Muir VRC 11000

Anchors: (2) 792 lbs (360 kg) each Pool "N" type HHP

Anchor Chain: 450' high test $\frac{3}{4}$ " galvanized grade II stud link chain

(1) MCA approved Nautical Structures 2,500 lb crane

Boat Crane and Davits: (1) Nautical Structures 4,000 lb. telescoping tender launching crane in tender garage.

FIREFIGHTING & SECURITY EQUIPMENT

As per SOLAS requirements

EXCLUSIONS

36' Yellow Fin with 3 x 275 hp engines (6) sets of SCUBA gear Brownies third lung underwater scooters Snorkel gear assorted towable toys fishing gear Board games

Owner's personal effects and art work. A full inventory of exclusions to be provided at time of fully executed Purchase Agreement.

ACCOMMODATIONS and LAYOUT

The main aft deck can be air conditioned or heated as desired. A rectangular table seats up to 12 guests. The 42" Plasma TV folds down and is complemented by a state of the art entertainment sound system. The Main Salon/Dining area is a large open area with wet bar aft and comfortable yet elegant seating enhanced by a full entertainment system (complete with 60" Sat-TV). Forward is the dining area with a 200 year old Carolina Walnut wood dining table with seating for up to 12. A day head is located on the starboard side adjacent to two (2) floor to ceiling wine cabinets. The upper aft deck offers alfresco dining for up to 12 guests at the custom made high-gloss round table. This deck also offers additional conversational seating areas with custom made chairs as well as bench seating. The upper aft deck can be air conditioned or heated and is equipped with surround sound. The full beam Skylounge has a Walnut wood bar with Onyx marble inlay, seating for 6 that is easily accessible from the outdoor dining and entertainment areas. There is an L-shaped sofa, two chairs and a 52" fold down TV for casual relaxing. The day head is located in the hallway port side. The Wheelhouse features custom Buckskin leather bench seating paralleling the navigation controls. The spectacular sundeck features an 8 person Jacuzzi, a wet bar with icemaker, refrigerator, sink and seating for 5, Elliptical machine, and a teak table that seats 12 comfortably. The 50" plasma Sat-TV drops down from the overhead and swivels. The day head is located to port and forward are lounge chairs and observation seating. The garage houses a crane to deploy the tender and the (2) 3-

person waverunners.

Исключения

При продаже яхты исключаются личные вещи владельца.

Отказ от ответственности

Компания предоставляет описание судна или яхты добросовестно, но не может гарантировать точность этой информации, а также не ручается за техническое состояние. Покупатель должен проинструктировать своих агентов или оценщиков исследовать представленную информацию более подробно, по собственному желанию. Продажа судна или яхты, изменение цены или снятие с продажи будет происходить без предварительного уведомления.

ФОТОГРАФИИ

Main Salon



Dining Salon



Main Aft Deck



Galley



Master Stateroom Study



Master Stateroom



Master Bath



Master Bath



Guest Stateroom - Port King



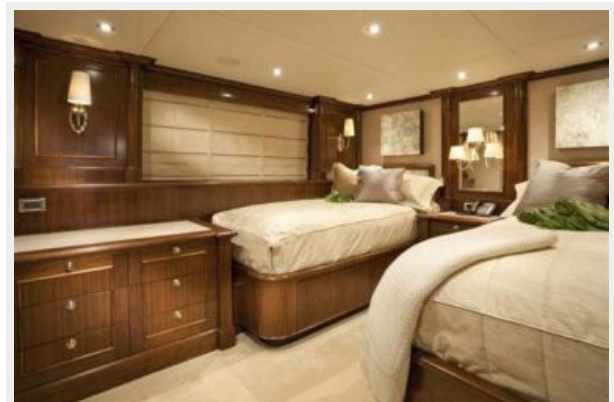
Guest Stateroom - Starboard King



Guest Stateroom Bath - Starboard King



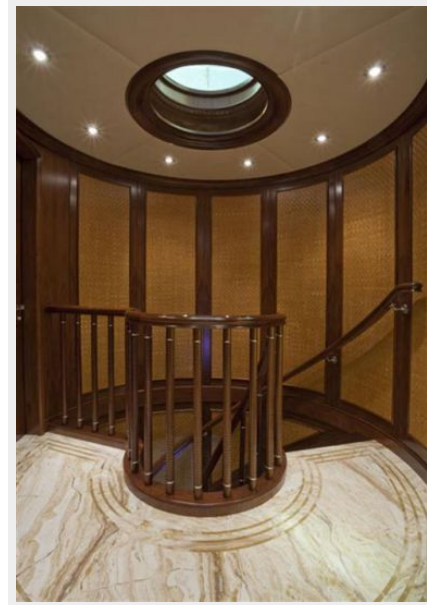
Guest Stateroom - Twin



Guest Stateroom Bath - Twin



Skylight



Skylounge



Skylounge



Guest Stateroom VIP - Skylounge



Guest Stateroom VIP Bath - Skylounge



Skylounge Aft Deck



Wheelhouse



Sun Deck Jacuzzi

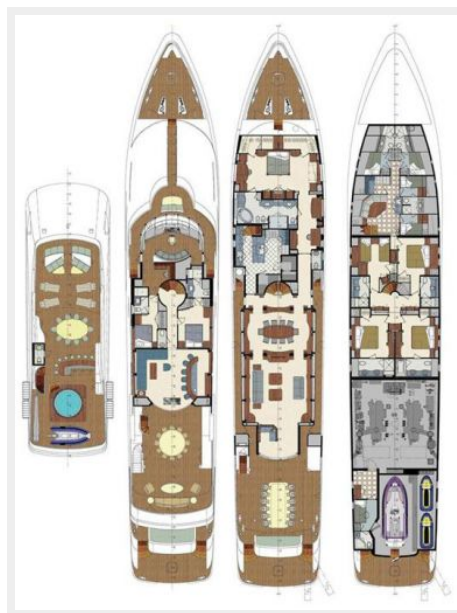
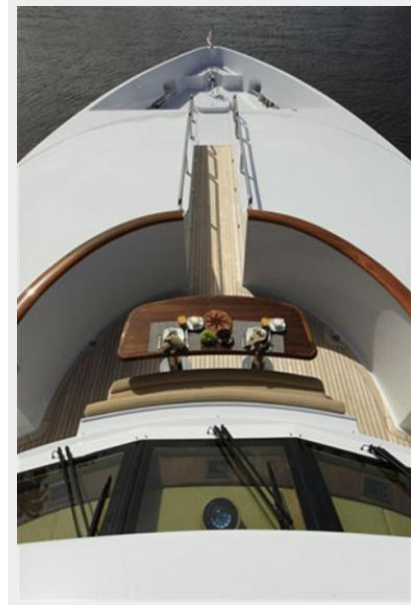


Sun Deck



Bow

Tender Garage



КОНТАКТЫ

Андрей Шестаков (Andrey Shestakov) – ведущий яхтенный брокер отдела продаж яхт и судов компании Shestakov Yacht Sales Inc. Официальный представитель Shestakov Yacht Sales Inc. для русскоговорящих клиентов в центральном офисе компании в Майами/Форт Лодердейл/Флорида/США.

Контактная информация

Email: andrey@shestakovyachtsales.com

Web: shestakovyachtsales.com

Телефоны

Краснодарский край: **+7(918)465-66-44**

США, Майами, Флорида: **+1(954)274-4435**

Время работы

Понедельник – Суббота: **9:00 - 21:00**
EDT

Воскресенье: **Закрито**

Адрес



Harbour Towne Marina, 850 NE 3rd St,
STE 213, Dania, FL 33004