

CHASSEUR — LITTLE HARBOR



Судостроитель: LITTLE HARBOR

Год постройки: 1989

Модель: Крейсерская яхта

Цена: **ЦЕНА ЯХТЫ ПО ЗАПРОСУ**

Местонахождение: United States

Длина общая: 54' 0" (16.46m)

Ширина: 15' 1" (4.60m)

Мин. осадка: 6' 4" (1.93m)

Макс. осадка: 13' 5" (4.09m)

Крейс. скорость: 8 Kts. (9 MPH)

Макс. скорость: 9 Kts. (10 MPH)

Купить **CHASSEUR — LITTLE HARBOR** а также выбрать подходящую вам яхту из нашего каталога яхт вам поможет опытный яхтенный брокер Андрей Шестаков. На сегодняшний день компания **Shestakov Yacht Sales Inc.** имеет большое количество яхт в собственном списке продаж, а также тесно сотрудничает со всеми крупными яхтенными производителями по всему миру.

Для того чтобы купить яхту **CHASSEUR — LITTLE HARBOR** а также проконсультироваться по любому вопросу связанному с покупкой, продажей, чартером яхт позвоните по телефону **+7(918)465-66-44**.

ОГЛАВЛЕНИЕ

ОГЛАВЛЕНИЕ	2
ХАРАКТЕРИСТИКИ	4
Обзор	4
Основная информация	4
Размеры	4
Скорость, вместимость и масса	5
Размещение	5
Корпус и палуба	5
Информация о двигателе	5
ПОДРОБНОЕ ОПИСАНИЕ	6
INTRODUCTION	6
ACCOMMODATIONS	6
MASTER STATEROOM	6
NAV STATION	7
GALLEY	7
MAIN SALON	7
GUEST STATEROOMS	8
FOREPEAK	8
ELECTRONICS and NAVIGATION EQUIPMENT	8
ELECTRICAL SYSTEM	9
ENGINE AND MECHANICAL EQUIPMENT	9
DECK	10
COCKPIT	10
SAFETY EQUIPMENT	11
HULL	11
SAILS and RIGGING	12
ADDITIONAL EQUIPMENT	13
REMARKS	13

EXCLUSIONS	13
Исключения	13
Отказ от ответственности	13
ФОТОГРАФИИ	15
КОНТАКТЫ	20
Контактная информация	20
Телефоны	20
Время работы	20
Адрес	20

ХАРАКТЕРИСТИКИ

Обзор

CHASSEUR is an exceptional example of the classic Little Harbor 54. Customized with an extended, hydraulically-tuned mast, double headsails and Leisure Furl boom, she is ready for her next Bermuda race or family cruise to the Caribbean. CHASSEUR remains comfortable in 40 knot winds and 20 foot seas, while crews on less capable yachts prepare for extreme conditions. But when the winds die, her fully battened main carries her along at 5 knots in 10 knot winds while similar boats with in-mast furling are forced to motor. And if a beat to windward is required, just drop her airfoil centerboard, and she will out-point anything in her class.

Extensively equipped for extended offshore cruising, CHASSEUR is also fully compliant to ORC Category One racing requirements. A finely detailed cruiser, she is also race-ready. In excellent condition, CHASSEUR is one of a very few yachts that can be considered an investment with some endurance, as well-maintained Little Harbors continue to sell at or above their original prices. All good reasons to own and enjoy one of the all-time best cruising boats out there.

Include CHASSEUR in your search, and you will not only be impressed by her equipment and condition, but also enticed by her beautiful lines and finely crafted construction.

Основная информация

Тип судна: Крейсерская яхта

Подкатегория: Center Cockpit

Модельный год: 1989

Год постройки: 1989

Год обновления: 2009

Вид обновления: Comprehensive

Страна: United States

Регистрационный номер: 946157

Верх: Dodger

Размеры

Длина общая: 54' 0" (16.46m)

Длина по ватерлинии: 41' 0" (12.50m)

Длина палубы: 54' 0" (16.46m)

Ширина: 15' 1" (4.60m)

Мин. осадка: 6' 4" (1.93m)

Макс. осадка: 13' 5" (4.09m)

Скорость, вместимость и масса

Крейс. скорость: 8 Kts. (9 MPH)

Макс. скорость: 9 Kts. (10 MPH)

Водоизмещение: 62000 Pounds

Вместимость воды: 240 Gallons

Объем топливного бака: 250 Gallons

Размещение

Всего кают: 3

Всего коек: 7

Спальные места: 9

Всего ком. состава: 3

Корпус и палуба

Материал корпуса: Fiberglass Sandwich

Материал палубы: Teak over Fiberglass

Комплектация корпуса: Centerboard

Цвет корпуса: Jade Mist Green

Дизайнер корпуса: Ted Hood

Информация о двигателе

Двигатели: 1

Производитель: Westerbeke

Тип двигателя: Inboard

Тип топлива: Diesel

ПОДРОБНОЕ ОПИСАНИЕ

INTRODUCTION

CHASSEUR is an exceptional example of the classic Little Harbor 54. Customized with an extended, hydraulically-tuned mast, double headsails and Leisure Furl boom, she is ready for her next Bermuda race or family cruise to the Caribbean. CHASSEUR remains comfortable in 40 knot winds and 20 foot seas, while crews on less capable yachts prepare for extreme conditions. But when the winds die, her fully battened main carries her along at 5 knots in 10 knot winds while similar boats with in-mast furling are forced to motor. And if a beat to windward is required, just drop her airfoil centerboard, and she will out-point anything in her class.

Extensively equipped for extended offshore cruising, CHASSEUR is also fully compliant to ORC Category One racing requirements. A finely detailed cruiser, she is also race-ready. In excellent condition, CHASSEUR is one of a very few yachts that can be considered an investment with some endurance, as well-maintained Little Harbors continue to sell at or above their original prices. All good reasons to own and enjoy one of the all-time best cruising boats out there.

Include CHASSEUR in your search, and you will not only be impressed by her equipment and condition, but also enticed by her beautiful lines and finely crafted construction.

ACCOMMODATIONS

She sleeps seven in three staterooms, with two additional sea berths in the main cabin. CHASSEUR has three heads, all with showers. Below decks, CHASSEUR is finished throughout with off-white bulkheads and contrasting gloss varnished teak joinery, lockers and doors, as well as varnished teak and holly soles. The detail is elegant and comparable to the world's finest furniture. The high gloss varnished teak combined with clean style off-white bulkheads make for a stunning ambiance below decks. The overheads are off-white, with teak trim. The entire below decks accommodations, salon and galley are air conditioned by MarineAir with three separate compressors, each with its own digital thermostat. Heat can be produced from the system in a reverse cycle mode. An Espar diesel-fired heater is in the lazarette with ducting throughout the vessel. Natural ventilation is excellent, compliments of:

- (14) Stainless steel opening portholes
- (10) Hatches, all with screens
- (11) 12V Hella cabin fans

MASTER STATEROOM

The aft owner's stateroom is full beam and features two long 7-foot berths (double to port, single to starboard). Outboard of the berths are Little Harbor lockers running along the hull and deck,

with storage lockers and drawers beneath the berths. Forward to starboard are a hanging locker and three-drawer dresser. Forward of the port berth is a general locker plus a unique hanging locker that is oversized and accessible from both the stateroom and the owner's head. Forward on center bulkhead is a lovely vanity with two drawers and a mirror. Forward to port is the owner's head, complete with VacuFlush fresh water electric vacuum toilet, vanity, sink, medicine cabinet, several storage lockers, linen locker and hanging locker. Next forward is the owner's stall shower, which provides several outboard lockers including another large hanging locker, ideal for foul weather gear. The separate shower stall has access from the both the owner's head and the aft end of the main saloon. Centerline between the two berths is a hatch that offers excellent ventilation and emergency deck access from the stateroom. There is a B&G display for monitoring the ship's systems.

NAV STATION

Forward to port is the Nav Station, complete with a full array of electronics, large chart table with 17" flat panel display and storage beneath, several lockers for storage of loose nav gear and three drawers. Inboard of the nav station are electrical panels, full gauges, circuit breakers and all the switching for both DC and AC systems.

GALLEY

A very functional galley is aft of the salon on the starboard side and features Corian countertops, two deep stainless steel sinks, ingeniously designed refrigeration and freezer units and storage in all sorts of "found" spaces. A door from the aft end of the galley leads into the owner's stateroom. Inboard and over the counter are numerous lockers for dishes, glasses and condiments.

- Three-burner Force10 stainless propane stove with oven
- Panasonic microwave oven
- Seafrast 12v fridge
- Seafrast 12v freezer
- Spectra Catalina MKII watermaker w/ auto flush
- Built-in trash bin

MAIN SALON

The main salon features a fore and aft settee that expands to an additional sea berth. Beneath are drawers as well as large storage bins outboard of the settee backrest. Opposite the settee on the starboard side is a U-shaped dinette with a gorgeous inlaid varnished teak dining table. A bench seat stores below the table and can be used as additional seating. Outboard and over both the dinette and the opposite settee are a total of six storage bins. Two lockers on the forward

bulkhead serve as storage for liquor or any other loose items and a four-drawer dresser, part of which is used to house the stereo equipment (new 2015). Six hull ports and numerous opening ports provide an open and airy ambiance in the main salon. Entertainment is provided by flat panel TV and Blu-Ray disc player.

GUEST STATEROOMS

Forward of the main salon to starboard is a guest stateroom with upper and lower berths. Above each berth are two large storage bins. Two additional drawers are in a dresser above a locker, and there is a hanging locker above a four-drawer dresser. This stateroom has its own ensuite head, complete with vanity, sink, medicine cabinet, hanging locker, several storage lockers, Wilcox-Crittendon head and shower. Opposite this stateroom to port is the second guest stateroom that is essentially a mirror image of the one to starboard, with the addition of two drawers below the lower berth. It has the same accommodations and its own head with shower. A door in the forward bulkhead and forward end of the shower provides direct access into the forepeak storage.

FOREPEAK

The forepeak is nicely set up for sail and gear storage and includes a functional workbench and tool storage area. The chain locker is forward. A good-sized hatch over the forepeak allows gear to be taken directly in or out, and a stainless ladder provides access to and from the deck.

ELECTRONICS and NAVIGATION EQUIPMENT

- AIS Class B Transceiver (2014)
- Furuno 48 mile radar (updated with chart table and cockpit displays and ARP capability in 2014)
- Robertson AP300X autopilot at nav station with full hand-set at helm
- Robertson AP21 back-up autopilot with full hand-set at helm
- New hydraulic RAMs
- Furuno GPS (2014)
- Garmin GPS
- Furuno weatherfax
- Computer-driven electronic charting with LCD displays in nav station and cockpit
- ICOM M802 SSB with AT140 tuner and Pactor IV modem (2014)
- Standard Horizon GX 5000 VHF w/ remote mike and hailer
- B&G Hercules 690 sailing instruments (7 displays in cockpit, 1 in aft cabin, 2 in nav station)
- B&G 20/20 display units (2) in cockpit
- Radar scanner mounted on its own mast at stern with 12v hydraulic remote leveler
- B&G 600 fathometer (2) with gravity switch

- B&G sonic speed sensor
- Tank tender, (3) tanks
- Iridium phone with data capability, antenna mounted on stern rail
- Black Box computer with Windows 8 and Rose Point Coastal Navigator (2014)
- 17" flat-panel chart table display
- 15" flat-panel sunlight viewable touch screen cockpit display (2014)
- Rose Point and C-Map Charts: East Coast, Caribbean, Bahamas, Bermuda (2014)

ELECTRICAL SYSTEM

- 12-volt and 24-volt DC / 110-volt AC systems
- (6) 8D Lifeline AGM batteries (house) (new 2015)
- (2) 4D Lifeline AGM batteries (starting) (new 2015)
- (2) G27 AGM batteries (thruster)
- Xantrex battery monitor
- Battery isolator and combiner
- Balmar large case 12v 225 amp alternator w/ 3-stage regulator and temp sense
- Balmar small case 24v 90 amp alternator w/ 3-stage regulator and temp sense
- Westerbeke 8 kw generator complete with its own 4D AGM starting battery (3,000 hrs approx; 400 hrs since removal and complete overhaul. (2009)
- 24-volt bow thruster system
- 110-volt power is supplied by a dockside system (50 amps)
- 110-volt outlet at binnacle
- Xantrex Freedom 3000 with 150 amp inverter/charger (2014) permits the use of 110 volt appliances without using shore power or running the generator
- 50 amp shore power w/ cord
- Interior LED red/white overhead lights
- (8) LED reading lamps

ENGINE AND MECHANICAL EQUIPMENT

Engine and generator are in one compartment under the cockpit with access from all four sides, making work on this equipment easily accessible. Engine compartment completely reinsulated with Sound Down insulating foam panels.

- Engine removed and rebuilt; generator removed and rebuilt (2009)
- Fuel lines replaced (2009)
- Dual Racor fuel filters with vacuum gauges (2009)
- Westerbeke 100 freshwater-cooled diesel engine rated for 100 hp at 2800 rpm. (3,200 hrs approx; 600 hrs. since engine was pulled and completely overhauled (2009)
- Automatic Halon extinguisher in engine room
- 3-Blade Max prop, RH fitted with spurs

- Fuel transfer pump
- Aquadrive shaft and motor mounts
- Blower, engine compartment
- Lewmar retractable bow thruster with foot pedals at helm and wireless remote
- Spectra Catalina 300 MK2 watermaker
- Jabsco Par 34600 auto bilge pump
- Jabsco back-up electric bilge pump
- Bilge pump, manual, below deck
- Bilge pump, manual, cockpit
- Engine raw water diverter bilge pump
- Black water deck pump-out and macerator pumps for holding tanks
- Electric oil change pump for engine, generator and gearbox
- (2) Independent Paragon Senior domestic water pumps, 3M filtration system
- (2) Accumulator tanks
- Engine generator and bilge alarms
- (2) Fuel tanks (250 gal. total) w/ transfer pump
- Water tank (240 gal.)

DECK

- Maxwell 3500 windlass w/ wireless remote and chain counter
- Rocna 88# anchor, 300 ft 3/8" hi-test G4 chain
- Fortress 45# anchor, 30' chain and 300' braid
- Stainless steel bow and stern pulpits with double stainless lifelines and stanchions
- Dinghy davits
- (2) Weatherboards for cockpit walk-thru
- (2) Propane tanks, aluminum
- Propane auto control with sniffer system and 2-stage regulator
- Barbeque grill with propane connector
- Fenders
- Docklines
- Custom folding swim/boarding ladder, stainless steel
- Full signal flag set in custom locker
-

COCKPIT

CHASSEUR's cockpit is the center of life aboard. At sea, her semi-rigid dodger glass provides crystal clear vision, and the rugged dodger and bimini stainless steel structure is designed to weather any storm. With the roll-down Strataglass sides and dodger-to-bimini connector in place, the cockpit remains dry, and watches can be completed without donning foulies. At anchor, crew and guests remain dry and out of the wind, and when the bugs arrive, a full set of bug screens

completely protects the cockpit, allowing the companionway to remain open throughout the night. There is room for at least ten adults to enjoy sundowners, and the fold-down table can expand to accommodate six. Cushions and backrests make everyone comfortable.

- Sunbrella cushions and backrests
- Sunbrella dodger with Lexan glass windows and full sun screen
- Bimini with 3/4 glass enclosure and full screens and connector panels
- 15" color navigation display
- Stereo speakers
- Furuno remote radar display
- RAM mike and loud hailer
- Full engine instrumentation with bilge pump warning light
- Day/night chart light at binnacle
- Thruster control foot pedals
- Complete suite of USCG-required equipment

SAFETY EQUIPMENT

- ORR certificate updated (2011), Bermuda Race ready
- Givens 8-person life raft in canister mounted on deck in stainless cradle (serviced 2015)
- 406 MHZ EPIRB
- Full-length flat nylon jack lines on deck and in cockpit
- Signal kit
- MOM 8A
- Lifesling
- Search light with sockets at binnacle and foredeck
- Portable watermaker in abandon-ship bag
- (6) Life jackets
- (5) Portable fire extinguishers
- CO detectors and smoke sensors throughout boat

HULL

Hull was sanded, faired and barrier coated and topsides were Awlgripp during 2008/09 refit. Hull is hand laid fiberglass with Airex foam core sandwich with internal lead ballast. Fiberglass deck with Divinycell foam core construction. Hand laid teak decks, refinished with plugs and polysulfide replaced. Rubrail with stainless steel striker. Hull is Forest Green Awlgrip. New bottom paint (2015). The centerboard is two-part female molded FRP with bronze protective shoe on leading edge and solid FRP around pin area. The centerboard has a highly efficient foil shape for performance upwind under sail. Centerboard hoist via wire cable to winch on deck using highest quality, 1/4", 7x19 S/S wire (2009). The centerboard trunk is molded FRP. The balanced spade rudder is two-part female molded FRP with 3-1/2" S/S rudder stock. Rudder blade molded

around S/S frame welded to rudder stock. Rudder stock supported by upper Harken bearing and lower Duromax bearing. In July, 2015, rudder was lowered and inspected, and the lower bushing was replaced. A bronze stuffing box is provided with graphite impregnated packing. Centerboard configuration offers a minimum draft of 6'-4" with board up and a maximum draft of 13'-5" with board down.

SAILS and RIGGING

Rigging:

- Hall triple spreader aluminum mast
- In-boom Leisure Furl system
- Storm trysail track
- Navtec rod standing rigging, by Hall
- Navtec hydraulics
- Backstay, hydraulic control
- Boom vang, hydraulic control
- Babystay, hydraulic control
- Inner forestay, hydraulic control
- New halyards and runners (2011-2015)
- Harken headsail roller furler
- Harken inner staysail roller furler
- All blocks and deck hardware are Harken stainless steel
- Spinnaker pole, carbon fiber
- Hydraulic emergency rod cutter

Sails:

- Sails cleaned & refurbished, new UV shield
- North 110% jib
- North main, fully battened
- North roller furling 125% jib
- North storm trysail
- Inner roller furling staysail
- North asymmetrical spinnaker

Barient Winches:

- (2) #37 electric four-speed
- (2) #36 electric two-speed
- (6) #28 two-speed
- (4) #27 two-speed
- All winches serviced (2014-2015)

ADDITIONAL EQUIPMENT

- Navigation and spreader lights
- 12-volt spot light
- Teak flag staffs at masthead and stern
- All bunks fitted with lee cloths
- Gailrider drogue
- Sea anchor
- Fresh water washdown with quick disconnect
- WiFi booster and house WiFi (2015)
- TV external antenna/cable connection
- Spares

REMARKS

CHASSEUR is a very special Little Harbor 54. She was built for a well-known New England yachtsman who participated in major offshore races. CHASSEUR has a triple-spreader Hall racing spar nearly four feet taller than her sister ships. Eighteen hundred pounds of additional ballast was added to produce a stiffer boat, while carrying her powerful sail plan. All this combined made a comfortable three-stateroom cruising boat that is also a potent contender in long-distance racing. She has since acquired a Leisure Furl boom for ease of sail handling along with constant upgrades and superb maintenance, including, in 2008/09, an extensive refit in preparation for a year-long family cruise. CHASSEUR is stunningly good looking and a thoroughly capable boat, ready to please her next owner.

EXCLUSIONS

- The owner's personal effects, tools and loose gear are excluded from the sale.
- Please inquire about the full list of exclusions.

Исключения

При продаже яхты исключаются личные вещи владельца.

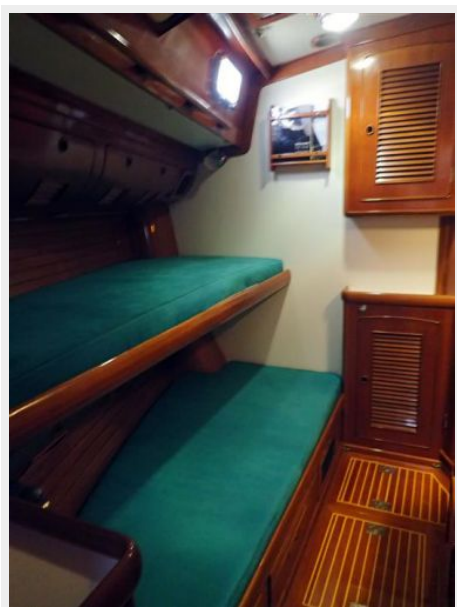
Отказ от ответственности

Компания предоставляет описание судна или яхты добросовестно, но не может гарантировать точность этой информации, а также не ручается за техническое состояние. Покупатель должен проинструктировать своих агентов или оценщиков исследовать представленную информацию более подробно, по собственному желанию. Продажа судна или яхты, изменение цены или снятие с продажи будет происходить без

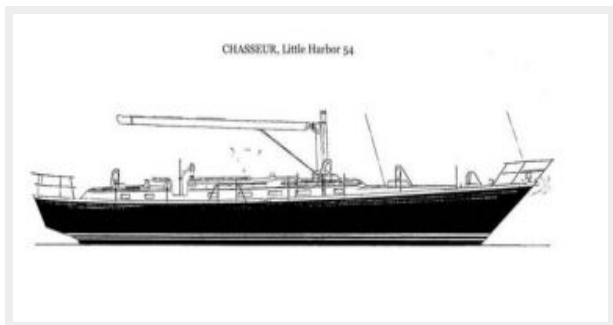
предварительного уведомления.

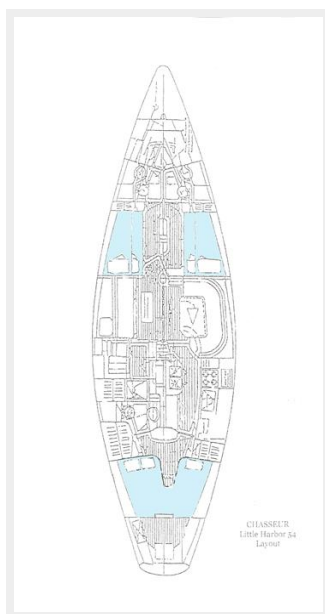
ФОТОГРАФИИ











КОНТАКТЫ

Андрей Шестаков (Andrey Shestakov) – ведущий яхтенный брокер отдела продаж яхт и судов компании Shestakov Yacht Sales Inc. Официальный представитель Shestakov Yacht Sales Inc. для русскоговорящих клиентов в центральном офисе компании в Майами/Форт Лодердейл/Флорида/США.

Контактная информация

Email: andrey@shestakovyachtsales.com

Web: shestakovyachtsales.com

Телефоны

Краснодарский край: **+7(918)465-66-44**

США, Майами, Флорида: **+1(954)274-4435**

Время работы

Понедельник – Суббота: **9:00 - 21:00**
EDT

Воскресенье: **Закрето**

Адрес



Harbour Towne Marina, 850 NE 3rd St,
STE 213, Dania, FL 33004