

# PETRUS 2007 SANLORENZO 108 @ PISA - I' — SANLORENZO



**Builder:** [SANLORENZO](#)

**Year Built:** 2007

**Model:** Motor Yacht

**Price:** PRICE ON APPLICATION

**Location:** Italy

**LOA:** 108' (32.92mm)

**Beam:** 24

**Max Draft:** 6' 1" (1.85mm)

**Cruise Speed:** 22 Knots Kts. (25 MPH)

**Max Speed:** 26 Knots Kts. (30 MPH)

Our experienced yacht broker, Andrey Shestakov, will help you choose and buy a yacht that best suits your needs **PETRUS 2007 SANLORENZO 108 @ PISA - ITALY — SANLORENZO** from our catalogue. Presently, at Shestakov Yacht Sales Inc., we have a wide variety of yachts available on our sale's list. We also work in close contact with all the big yacht manufacturers from all over the world.

If you would like to buy a yacht **PETRUS 2007 SANLORENZO 108 @ PISA - ITALY — SANLORENZO** or would like help answering any questions concerning purchasing, selling or chartering a yacht, please call **+1(954)274-4435**

---

# TABLE OF CONTENTS

---

TABLE OF CONTENTS	2
SPECIFICATIONS	3
Overview	3
Basic Information	3
Dimensions	3
Speed, Capacities and Weight	4
Accommodations	4
Hull and Deck Information	4
Engine Information	4
PHOTOS	5
CONTACTS	13
Contact details	13
Telephones	13
Office hours	13
Address	13

---

# SPECIFICATIONS

---

## Overview

---

2007 SANLORENZO 108 @ Pisa - Italy

She is at. CANTIERI DI PISA SRL, Italy.

Generators hours: 9,700

The SANLORENZO SL108 with its 33 metres, represents the flagship of the San Lorenzo fleet of fibreglass flybridge motor yachts built in the Ameglia Division. The unmistakable style and the fine design place SANLORENZO in the top list of the international production of luxury motor yachts, where the Italian shipyard has become synonymous of refinement and care for details, peculiarities of hand-built productions.

## Basic Information

---

**Category:** Motor Yacht

**Sub Category:** Mega Yacht

**Model Year:** 2007

**Year Built:** 2007

**Country:** Italy

## Dimensions

---

**LOA:** 108' (32.92mm)

**LWL:** 94' 6" (28.8mm)

**Beam:** 24

**Max Draft:** 6' 1" (1.85mm)

---

## Speed, Capacities and Weight

---

**Cruise Speed:** 22 Knots Kts. (25 MPH)

**Max Speed:** 26 Knots Kts. (30 MPH)

**Water Capacity:** 423 Gallons

**Holding Tank:** 159 Gal Gallons

**Fuel Capacity:** 4227 Gal Gallons

---

## Accommodations

---

**Total Cabins:** 4

**Total Berths:** 8

**Sleeps:** 8

**Total Heads:** 4

**Crew Cabin:** 5

**Crew Berths:** 5

**Crew Heads:** 3

---

## Hull and Deck Information

---

**Hull Material:** FRP

**Deck Material:** GRP

**Hull Configuration:** Semi-Displacement

**Hull Color:** White

**Exterior Designer:** Della Role

---

## Engine Information

---

**Engines:** 2

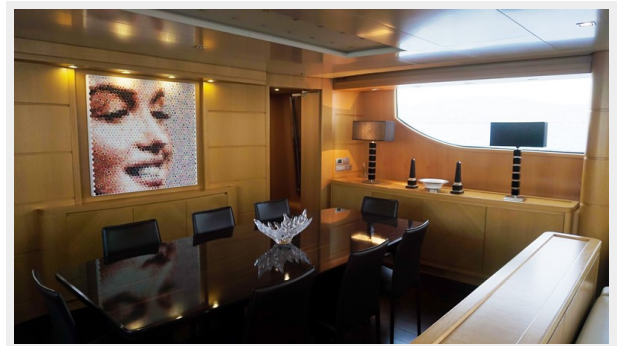
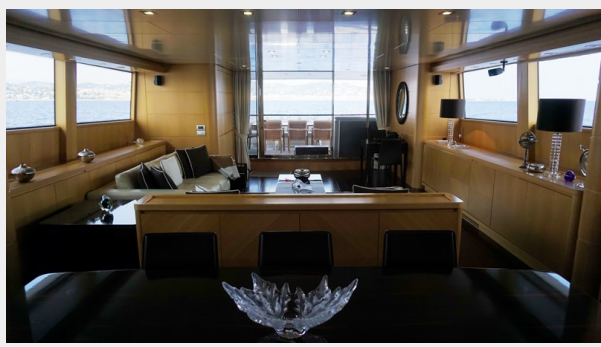
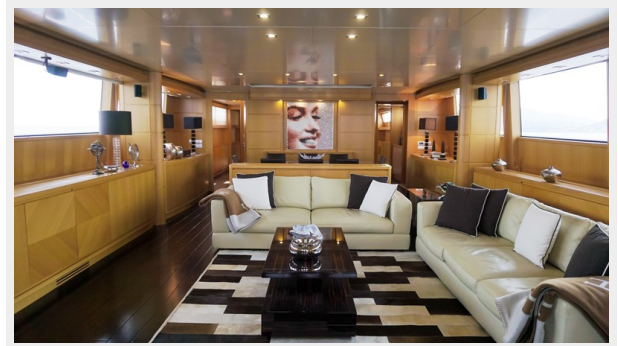
**Manufacturer:** MTU

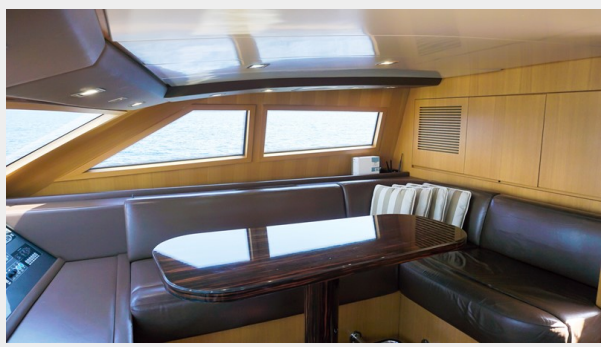
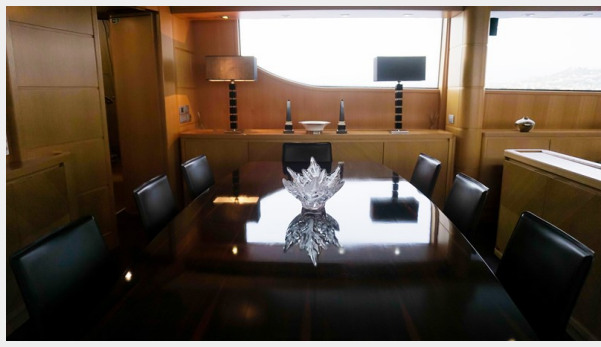
**Engine Type:** Inboard

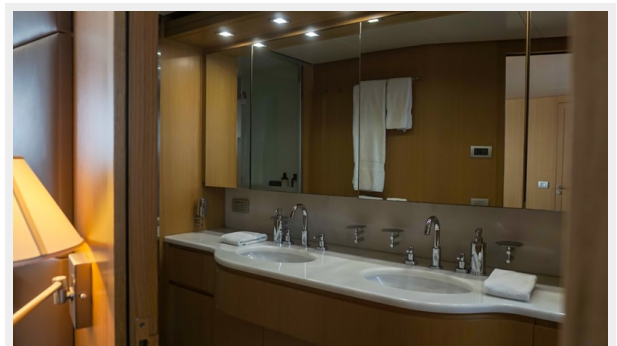
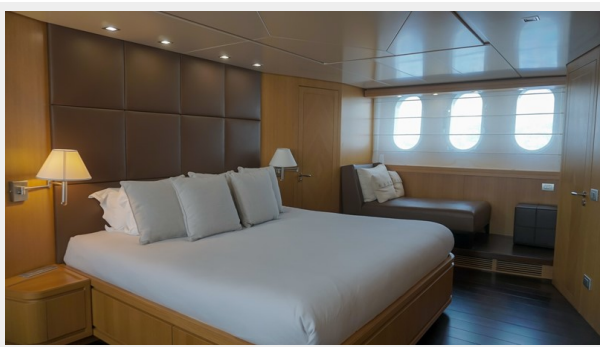
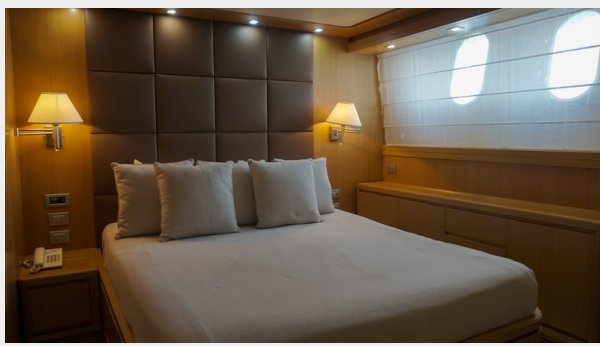
**Fuel Type:** Diesel

# PHOTOS

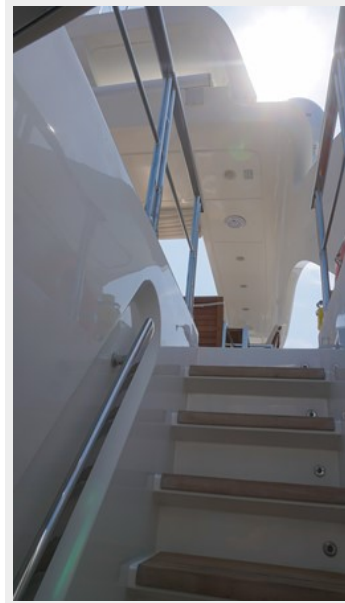
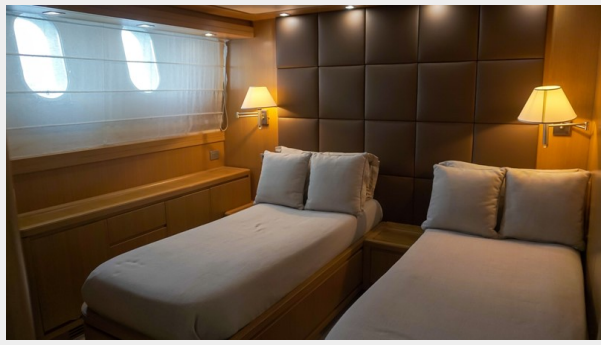




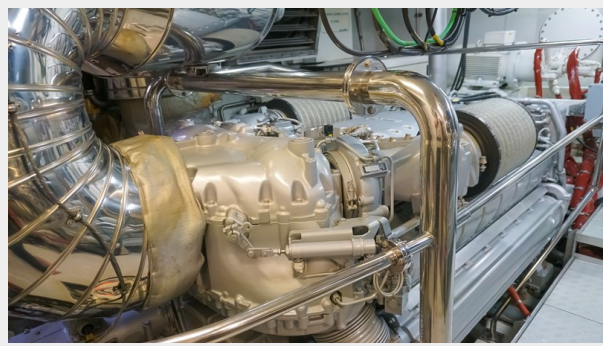
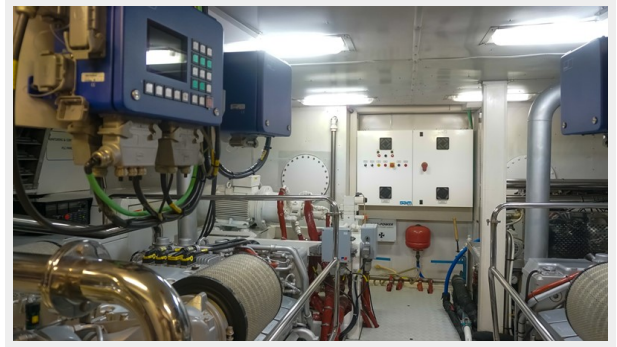
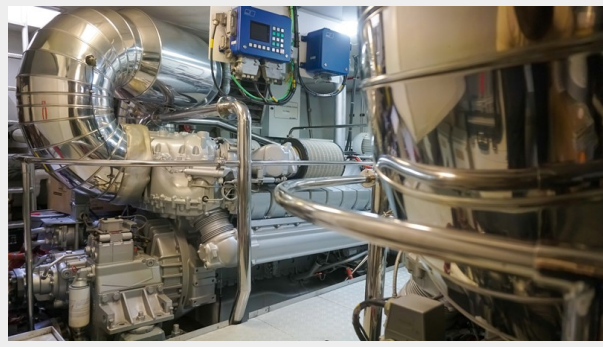


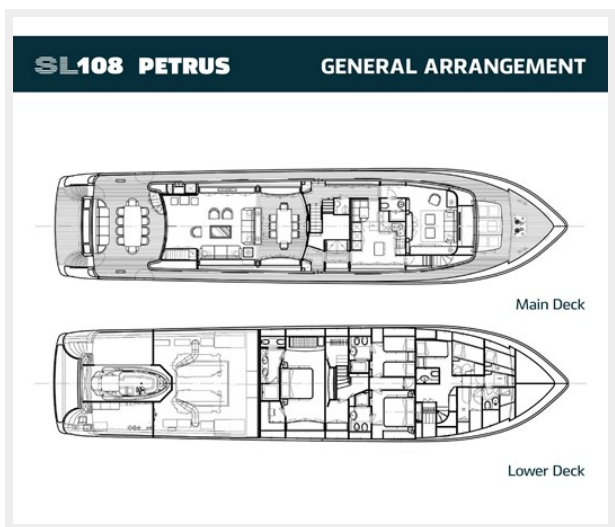
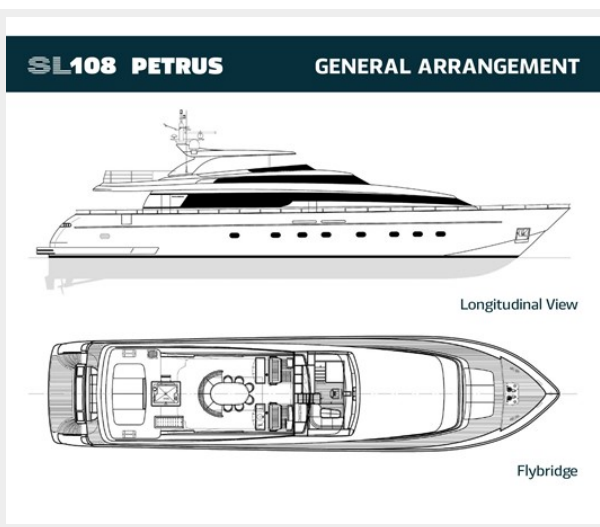
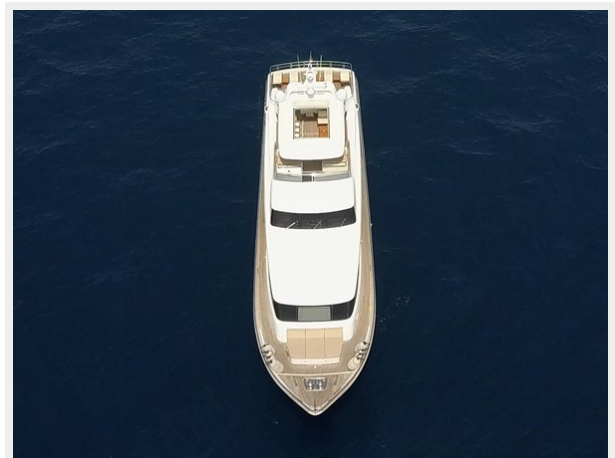












# CONTACTS

---

Andrey Shestakov, leading yacht broker of the sales department of Shestakov Yacht Sales Inc. Shestakov Yacht Sales Inc., the official representative of the Miami/Fort Lauderdale FL headquarters.

## Contact details

---

Email: [andrey@shestakovyachtsales.com](mailto:andrey@shestakovyachtsales.com)

Web: [shestakovyachtsales.com/en/](http://shestakovyachtsales.com/en/)

## Telephones

---

USA: +1(954)274-4435

## Office hours

---

Monday – Saturday: **9:00 - 21:00** EDT

Sunday: **closed**

## Address

---



Harbour Towne Marina, 850 NE 3rd St,  
STE 213, Dania, FL 33004