

CIRCUS — AZIMUT



Судостроитель: [AZIMUT](#)

Год постройки: 2003

Модель: Моторная яхта

Цена: **ЦЕНА ЯХТЫ ПО ЗАПРОСУ**

Местонахождение: United States

Длина общая: 80' 0" (24.38m)

Ширина: 19' 0" (5.79m)

Макс. осадка: 6' 7" (2.01m)

Крейс. скорость: 25 Kts. (29 MPH)

Макс. скорость: 32 Kts. (37 MPH)

Купить **Circus — AZIMUT** а также выбрать подходящую вам яхту из нашего каталога яхт вам поможет опытный яхтенный брокер Андрей Шестаков. На сегодняшний день компания **Shestakov Yacht Sales Inc.** имеет большое количество яхт в собственном списке продаж, а также тесно сотрудничает со всеми крупными яхтенными производителями по всему миру.

Для того чтобы купить яхту **Circus — AZIMUT** а также проконсультироваться по любому вопросу связанному с покупкой, продажей, чартером яхт позвоните по телефону **+7(918)465-66-44**.

ОГЛАВЛЕНИЕ

ОГЛАВЛЕНИЕ	2
ХАРАКТЕРИСТИКИ	4
Обзор	4
Основная информация	4
Размеры	4
Скорость, вместимость и масса	4
Размещение	5
Корпус и палуба	5
Информация о двигателе	5
ПОДРОБНОЕ ОПИСАНИЕ	6
Accommodations	6
Salon/Dining Area	6
Galley	6
Flybridge	7
Electronics and Navigational Equipment	8
Engine /Mechanical Equipment/Electrical	8
Remarks	9
Исключения	9
Отказ от ответственности	9
ФОТОГРАФИИ	10
Salon Fwd.	10
Salon Aft	10
Dining Area	10
Dining Area	10
Galley	10
Galley	10
Day Head	11
Master Stateroom	11

Master Stateroom Settee	11
Master Stateroom Dressing Table	11
VIP Stateroom	11
VIP Stateroom	11
Twin Guest Stateroom #1	12
VIP Stateroom	12
Washer/Dryer	12
Twin Guest Stateroom #2	12
Crew Quarters	12
Crew Quarters	12
Aft Deck Dining	13
Helm	13
Flybridge	13
Flybridge Seating	13
Flybridge Sunpad	13
Flybridge Grill/Sink	13
Stairs Going Down	14
Radar Arch	14
Engine Room	14
Transom	14
Engine Room	14
Profile	14
Profile	15
КОНТАКТЫ	16
Контактная информация	16
Телефоны	16
Время работы	16
Адрес	16

ХАРАКТЕРИСТИКИ

Обзор

Основная информация

Тип судна: Моторная яхта

Модельный год: 2004

Год постройки: 2003

Страна: United States

Открытая палуба мостика: Да

Размеры

Длина общая: 80' 0" (24.38m)

Ширина: 19' 0" (5.79m)

Макс. осадка: 6' 7" (2.01m)

Скорость, вместимость и масса

Крейс. скорость: 25 Kts. (29 MPH)

Крейсерская скорость поворота: 2000 Kts.

Макс. скорость: 32 Kts. (37 MPH)

Макс. скорость поворота: 2400 Kts.

Водоизмещение: 114000 Pounds

Вместимость воды: 396 Gallons

Объем топливного бака: 1584 Gallons

Размещение

Всего кают: 4

Всего коек: 6

Спальные места: 8

Всего ком. состава: 4

Каюты экипажа: 1

Койки экипажа: 2

Спальных мест экипажа: 2

Корпус и палуба

Материал корпуса: Fiberglass

Материал палубы: Fiberglass

Комплектация корпуса: Modified V-Hull

Информация о двигателе

Двигатели: 2

Производитель: MTU

Модель: 12V 2000 M91

Тип двигателя: Inboard

Тип топлива: Diesel

ПОДРОБНОЕ ОПИСАНИЕ

Accommodations

"Circus" is a stunning example of the fine Italian quality and craftsmanship for which Azimut is world-renowned.

She is finished with cherry wood throughout, including bulkheads, cabinetry and overhead accents that are highly detailed, well fitted and finished in high gloss lacquer that twinkles with clear reflections from recessed overhead lights.

Upholstered with leather, the furniture, soft bulkhead panels and dramatically shaped overheads are in neutral hues that nicely complement the woodwork. Most countertops are marble or granite, and the master head sole is marble.

In addition to its four (4) well-appointed staterooms, "Circus" also boasts comfortable crew quarters with crew lounge, private head & entrance through engine room.

The Salon is roomy and well-equipped for entertaining with its two (2) curved sofas, over-sized chair and dining area, which comfortably seats eight (8) for dinner. You must get aboard to experience the luxury and amenities that this beautiful yacht offers.

Salon/Dining Area

Features include:

- Two (2) curved sofas to port and starboard
- Over-sized chair on starboard
- Entertainment center which houses a 42" TV
- Bose Stereo surround system
- Oval coffee table
- Additional indirect lighting in ceilings & underneath the sofas
- Storage cabinet on port side of Salon
- Large oval dining table which seats 8

Galley

Equipment includes:

- A privacy wall which separates the Galley from the Salon area
- Sliding door and panel allow the Galley to be open or closed off
- Access to the Galley from outside the boat through a portside door
- Glass cook-top with (4) burners and overhead exhaust fan with light
- Convection/microwave oven
- Side-by-side built-in refrigerator/freezer
- Dishwasher
- Miele coffee/Esspresso machine
- In Sink Garbage Disposal
- Storage for pots & dry goods
- Ice Machine

Flybridge

Upper helm station:

- Main engine controls
- Main engines and reversing gear gauges
- Radar & GPS Plotter
- Electronic equipment for navigation
- Electric search light, horn and navigation light controls
- Intercom connecting wheelhouse, main deck and engine room
- Trim tab indicators/controls
- Rudder angle indicator
- VHF Radio

Other features include:

- Curved lounging sofas located port and starboard
- Furniture with built-in sink, refrigerator and barbecue
- Large table which seats (12)
- Helm seat which seats (3)
- Sun pads/large sunbathing area aft
- Electro-hydraulic davit (880 lbs. max) to lift tender
- Bow thruster controls
- Lights and water lights
- Upgraded Stereo & Speakers with Satellite Radio
- Drainage, which gets discharged on the hull sides

Electronics and Navigational Equipment

Equipment includes:

- Raytheon ST 7001+autopilot (wheelhouse)
- Watertight Raymarine ST 6000+ autopilot repeater (flybridge)
- Raymarine ST2 90 Analogue rudder display (wheelhouse & flybridge)
- Raymarine ST2 90 Digital Depth Gauge (wheelhouse & flybridge)
- Garmin GPS map 3210 GPS/Chartplotter (wheelhouse & flybridge)
- Raymarine Pathfinder RL80C Radar display (wheelhouse)
- Raymarine Pathfinder RL70C Radar display (flybridge)
- Raymarine VHF Radio (wheelhouse & flybridge)
- McMurdo Smartfind Plus 406 GPS EPIRB (flybridge)

Engine /Mechanical Equipment/Electrical

Equipment includes:

- Electrical system 110v-60Hz
- Tropical air conditioning
- Electrical extractor (24v DC) for each head
- Air 2 Mist eliminator to avoid water entering the engine room
- Air inlet ducts on both sides of the superstructure
- Predisposition for watermaker
- Remote control unit for watermaker and cables running from the wheelhouse to the engine room
- Air outlet ducts on aft and portholes height
- Francoils throughout the yacht with SMX controls in the Salon, the Galley, the wheelhouse, as well as all the cabins and crew quarters
- Housing for shower and shore connections located along the transom stairway (shore power, water, TV and phone and fuel tank filter)
- 2500w/24v reversible winch
- Anchor winch control
- Anchor (198 lbs.) with 13 mm chain, 328' length
- Chain storage with drain & 220v washing chain pump
- Electrical wipers for forward windows
- Two (2) electrical warping winches (stern) 1200w/24v
- Electro-hydraulic retractable gangway in stainless steel & teak
- Electro-hydraulic swim ladder
- Garage with electro-hydraulic door for the jet ski
- Launching and recovery system for the jet ski with remote
- Stainless steel handrail for stairs on the swim platform
- Oil change system for main engines & generators

- TV/phone jack shore inlets - US type on transom
- Hard plumbed main bilge pump
- Fire pump

Remarks

"Boat International" from Dag Pike - *"What was equally remarkable was the way the yacht performs at sea. Tested on a delivery trip from the yard at Viareggio to Genoa, in the aftermath of a Mediterranean gale, the Azimut 80 coped with the difficult conditions with apparent ease. Following sea conditions are the Achilles heel of so many motor yachts, but the full hull shape of the Azimut gave a comfortable ride."*

Исключения

При продаже яхты исключаются личные вещи владельца.

Отказ от ответственности

Компания предоставляет описание судна или яхты добросовестно, но не может гарантировать точность этой информации, а также не ручается за техническое состояние. Покупатель должен проинструктировать своих агентов или оценщиков исследовать представленную информацию более подробно, по собственному желанию. Продажа судна или яхты, изменение цены или снятие с продажи будет происходить без предварительного уведомления.

ФОТОГРАФИИ

Salon Fwd.



Salon Aft



Dining Area



Dining Area



Galley



Galley



Day Head



Master Stateroom



Master Stateroom Settee



Master Stateroom Dressing Table



VIP Stateroom



VIP Stateroom



VIP Stateroom



Twin Guest Stateroom #1



Twin Guest Stateroom #2



Washer/Dryer



Crew Quarters



Crew Quarters



Helm



Aft Deck Dining



Flybridge



Flybridge Seating



Flybridge Sunpad



Flybridge Grill/Sink



Stairs Going Down



Radar Arch



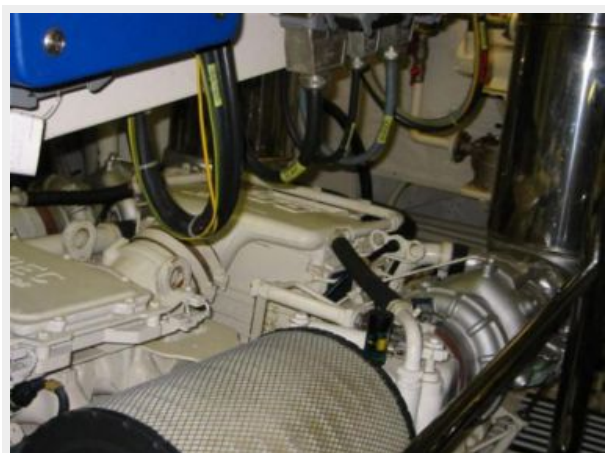
Transom



Engine Room



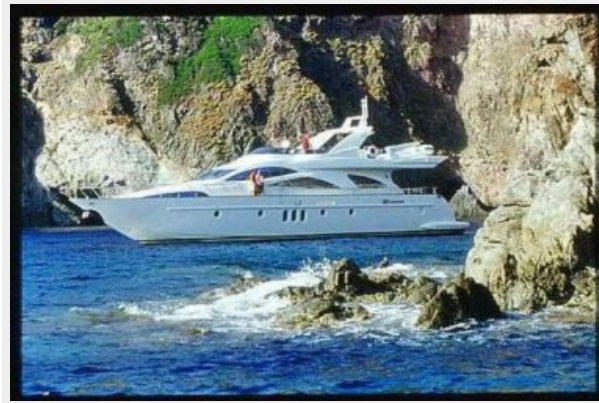
Engine Room



Profile



Profile



КОНТАКТЫ

Андрей Шестаков (Andrey Shestakov) – ведущий яхтенный брокер отдела продаж яхт и судов компании Shestakov Yacht Sales Inc. Официальный представитель Shestakov Yacht Sales Inc. для русскоговорящих клиентов в центральном офисе компании в Майами/Форт Лодердейл/Флорида/США.

Контактная информация

Email: andrey@shestakovyachtsales.com

Web: shestakovyachtsales.com

Телефоны

Краснодарский край: **+7(918)465-66-44**

США, Майами, Флорида: **+1(954)274-4435**

Время работы

Понедельник – Суббота: **9:00 - 21:00**
EDT

Воскресенье: **Закрито**

Адрес



Harbour Towne Marina, 850 NE 3rd St,
STE 213, Dania, FL 33004