

NORTH & SOUTH — HAMPTON



Builder: HAMPTON

Year Built: 2006

Model: Motor Yacht

Price: PRICE ON APPLICATION

Location: United States

LOA: 56' 0" (17.07m)

Beam: 16' 4" (4.98m)

Min Draft: 4' 0" (1.22m)

Cruise Speed: 20 Kts. (23 MPH)

Our experienced yacht broker, Andrey Shestakov, will help you choose and buy a yacht that best suits your needs **North & South — HAMPTON** from our catalogue. Presently, at Shestakov Yacht Sales Inc., we have a wide variety of yachts available on our sale's list. We also work in close contact with all the big yacht manufacturers from all over the world.

If you would like to buy a yacht **North & South — HAMPTON** or would like help answering any questions concerning purchasing, selling or chartering a yacht, please call **+1(954)274-4435**

TABLE OF CONTENTS

TABLE OF CONTENTS	2
SPECIFICATIONS	5
Overview	5
Basic Information	5
Dimensions	5
Speed, Capacities and Weight	5
Accommodations	6
Hull and Deck Information	6
Engine Information	6
DETAILED INFORMATION	7
Detailed Vessel Walkthrough	7
Interior Finish	7
Salon	7
Galley	8
Staterooms	8
Heads	8
Hull & Deck	9
Electrical System	9
Engine Room	9
Flybridge	10
General Equipment & Features	11
Detailed Broker's Comments	11
Disclaimer	11
Exclusions	12
Disclaimer	12
PHOTOS	13
Profile	13
Salon View Forward	13

Salon Settee	13
Salon Port Side TV Deployed	13
Salon Port Side TV Hidden	13
Galley	13
Galley Dinette	14
Master Stateroom	14
Guest Stateroom #2/Office	14
Guest Stateroom #1	14
Washer and Dryer	15
Flybridge Seating	15
Flybridge Helm Instruments	15
Steps Up to Flybridge	15
Walkaround Side Decks	16
Entry to Lazarette and Engine Room	16
Engine Room View Aft	16
Engine Room - Port Main Engine	16
Engine Room - Stbd Main Engine	16
Engine Room	16
Props & Pockets	17
Foredeck	17
Aft View	17
Aft Deck	17
Bow Pulpit & Anchor	17
Foredeck View Aft	17
Props & Pockets	18
Hampton Chrome Logo	18
CONTACTS	19
Contact details	19
Telephones	19

Office hours	19
Address	19

SPECIFICATIONS

Overview

"North & South" is a clean example of this well powered and solidly constructed "sea boat". Renowned for the hull's "seakeeping ability" and shallow draft, the Hampton 560 fly-bridge sedan makes a terrific family cruiser. Covered, walk-around side-decks make handling fenders and line's a safe and simple chore and the air-conditioned enclosed fly-bridge makes piloting simple, comfortable and stress-free in any weather. The low maintenance exterior constructed of only fiberglass and stainless steel ensures that more valuable time may be spent enjoying the time spent on the water and less time spent maintaining exterior teak and repairing pitting aluminum window frames. Fast, solid, strong and yet economical to operate; a solid cruiser.

Basic Information

Category: Motor Yacht

Model Year: 2006

Year Built: 2006

Country: United States

Vessel Top: 2363

Fly Bridge: Yes

Dimensions

LOA: 56' 0" (17.07m)

Beam: 16' 4" (4.98m)

Min Draft: 4' 0" (1.22m)

Clearance: 18' 3" (5.56m)

Speed, Capacities and Weight

Cruise Speed: 20 Kts. (23 MPH)

Displacement: 56000 Pounds

Water Capacity: 250 Gallons

Holding Tank: 80 Gallons

Fuel Capacity: 800 Gallons

Accommodations

Total Cabins: 3

Total Berths: 5

Sleeps: 6

Total Heads: 2

Hull and Deck Information

Hull Material: Fiberglass

Deck Material: Fiberglass

Hull Configuration: Modified V-Hull

Hull Finish: Fiberglass

Hull Designer: Jim Chen

Engine Information

Engines: 2

Manufacturer: Cummins

Model: QSM11

Engine Type: Inboard

Fuel Type: Diesel

DETAILED INFORMATION

Detailed Vessel Walkthrough

Starting all the way forward is the Master's Stateroom which features a Queen-size bed on the centerline, beautiful cherry (makore) wood paneling finished to a high gloss, private head with stall shower en-suite and hanging lockers, cabinets and drawers for plenty of clothing storage.

A companionway leads aft from the master's stateroom and past cabinets housing a stacked 120V clothing washing machine and a 240V dryer. A day/guests head follows next aft and to port side and serves the 1st guest's stateroom on the port side and the 2nd guest's stateroom which is across the companionway on starboard side. The port side guest's stateroom features fore & aft facing twin berths while the 2nd guest's stateroom features over/under bunk berths and small writer's desk w/ stool. Aft of these accommodations and up 5 easy steps one finds the fully equipped galley to port with a dinette with seats for 4-6 for dining across to starboard. The Saloon follows aft and on the same level and features a large, comfortable "L" shaped settee on starboard side and 2 swiveling recliner chairs across to the port side with a cabinet between which houses a 32" Sharp flat-screen TV. Aft of the saloon and outside through dual S/S framed sliding glass doors is the large, covered aft-deck. Bench seating for 3-4 is provided for as is a pedestal mounted teak cocktail table. From the Aft-deck, walk around side-decks give safe access forward to the bow and a set of easy stairs provides access to the fly-bridge and boat-deck areas overhead. Access to the spacious lazarette and engine-room is gained through a deck-hatch through the aft-deck's sole.

Interior Finish

- Cherry wood (Makore) interior
- High gloss finish
- Burl wood inlays in selected areas
- Burl wood table top and counter top in selected areas
- Teak and holly veneer floor in selected area
- Removable padded soft vinyl headliners throughout
- Halogen lights throughout
- Rope lighting in selected areas
- Push/Release type latches for cabinets and drawers
- Hunter Douglas blinds in salon and galley

Salon

- 32" LCD TV with electric TV lift
- Bose surround sound system

- Built in L-settee with leather upholstery
- Port side seats with leather upholstery
- 10-Disc CD stereo with speakers for salon, flybridge, and cockpit
- Cabinet for entertainment system
- Frameless windows
- Stainless steel sliding door

Galley

- Built in dinette with U-Shape settee
- Corian counter top with large sink
- Maytag full size refrigerator/freezer/with Icemaker
- 3 burner stove with oven
- Microwave oven
- Dish washer
- Quality single lever faucet
- Garbage disposal
- 12V galley exhaust blower
- Overhead variable intensity halogen lights
- GFI outlet

Staterooms

- (Three Stateroom layout)
- Island queen berth in master stateroom
- Master stateroom with 20" LCD TV
- Master stateroom rope lights
- Side by Side twin berths in VIP stateroom on the starboard side
- VIP stateroom with 15" LCD TV
- Third stateroom configured as office with sofa that converts into over/under twin berths
- AM/FM radio and DVD player for master and VIP staterooms
- Bed covers
- Storage under berth
- Hanging lockers with automatic lighting
- Storage cabinets

Heads

- Molded showers for both heads
- Corian counter tops
- Grohe faucets for sink and shower

- Corian floors
- ITT Quiet Flush heads
- Holding tank with macerator pump
- GFI outlets
- Exhaust fans

Hull & Deck

- Hand-laid solid fiberglass hull with Knytex or Cymax
- Vinylester resin for first 3 layers of hull lay-up
- Hand-laid fiberglass deck, deckhouse, and flybridge cored with high strength Divinycell.
- Hull/deck joint through-bolted every 6" sealed with 3M 5200 sealant, and glassed over with 3 layers of fiberglass
- Longitudinal and transverse stringer system
- Molded F.R.P. rub rail capped with solid stainless steel trim rail
- Molded non-skid F.R.P. decks

Electrical System

- Complete AC/DC breaker/distribution panel
- Kohler 15 KW/60 HZ generator with sound shield (575 hrs 4/2013)
- Kohler 8 KW/60 HZ generator with sound shield
- Inverter 3.0 KW with Link 1000 remote panel
- 75' Glendinning Cable Master Shorepower Cord Storage System
- 50 Amp battery charger
- Battery selection switch
- Shore power selection switch
- All DC Batteries were renewed during the spring of 2014
- Three 12V/200 Amp heavy duty marine batteries w/box for house system
- Two 12V/200 Amp heavy duty marine batteries w/box for engine starting
- Two 12V/200 Amp heavy duty marine batteries w/box for windlass and bow thruster
- One 12V/120 Amp heavy duty marine battery w/box for generator starting
- Quality AC and DC lighting throughout
- 120V outlets throughout
- Navigation lights
- Bonded electrical system
- Color coded wiring system
- Electric air horn

Engine Room

- Air Conditioned Engine Room
- Reverso Electric Oil Changing System
- Twin Cummins QSM-11 Series 660 HP Engines
- Engine Hours 530
- Under water exhaust system with bypass to transom
- Dripless packing glands
- Engine room lead foam sound insulation
- Engine room bulkhead insulated with extra foam sound insulation
- Engine room blowers
- Aquamet #22 stainless steel shafts and precision 5 blade propellers
- (1) Spare Set of Props
- Stainless steel water tanks
- Racor Dual 1000 FG fuel filters for each engine
- S/S rudders and rudder posts
- F.R.P fuel tanks
- Color coded copper fuel lines
- Color coded copper water lines
- Color coded hydraulic fluid lines
- Pressurized fresh water system
- Seacocks and sea strainers on engine raw water intakes
- Rule automatic bilge pumps
- One Whale Gusher hand bilge pump
- 20 gallon water heater with heat exchanger
- F.R.P. diamond plate floors
- Holding tank with macerator pump plumbed for deck side or overboard discharge
- Engine room AC and DC lights
- Engine shut down
- Engine room fire extinguisher
- Work bench
- Fresh water outlet
- White PU painted bilge

Flybridge

The flybridge has a full enclosure with hard top and tempered glass front windows with wipers and washers. The area is air conditioned (32,000 BTU's of A/C on the flybridge) and also has strataglass soft sides that can be opened up when desired. The three helm seats, which provide great visibility, are great for traveling with additional guests. There is an L-shaped settee with table, sink, refrigerator/ice maker and access to the boat deck that can be used for getting outside for some sun. It has a complete electronics package built around Ray Marine equipment plus VHF radio, auto pilot, spotlight control, bow thruster control, windlass control, tank monitor, wipers controls, stabilizer control and engine panels and hydraulic controls.

General Equipment & Features

- Reverse Cycle Chilled Water Air Conditioning System for Entire Boat (96,00 BTU's)
- Wesmar RS400 stabilizer system
- 10.7 HP Bow Thruster
- 2nd station cockpit hydraulic engine controls (for transmission only)
- Maxwell VWC 2200 lbs windlass with three station controls. Third station in cockpit
- 60 lbs C.Q.R. anchor and 275' anchor chain
- Engine synchronizer
- Washer and Dryer (Stacked)
- Central vacuum system
- Trim tabs
- Deck wash down at fwd and aft decks
- Dockside water pressure connection
- #316L grade stainless steel for mooring cleats, chocks, anchor roller, handrails, and stanchions
- Stainless steel portholes

Detailed Broker's Comments

“North & South” is a clean example of this well powered and solidly constructed “sea boat”. Renowned for the hull’s “seakeeping ability” and shallow draft, the Hampton 560 fly-bridge sedan makes a terrific family cruiser. Covered, walk-around side-decks make handling fenders and line’s a safe and simple chore and the air-conditioned enclosed fly-bridge makes piloting simple, comfortable and stress-free in any weather. The low maintenance exterior constructed of only fiberglass and stainless steel ensures that more valuable time may be spent enjoying the time spent on the water and less time spent maintaining exterior teak and repairing pitting aluminum window frames. Fast, solid, strong and yet economical to operate; a solid cruiser.

“North & South” shows well. The yacht’s low original engine hours on its machinery offer her next owner an opportunity to maximize the yacht’s resale value, while presumably keeping costs for mechanical maintenance and repairs to a minimum. Owner will consider small trades and has “North & South” offered for sale at very attractive pricing. The fuel burn rate is approximately 10 GPH at 9 knots and between 26-28 GPH at 15 knots. The range is 700 miles at 9 knots. Please note that the davit shown in the photographs is no longer included in the sale with the vessel.

Disclaimer

The Company offers the details of this vessel in good faith but cannot guarantee or warrant the

accuracy of this information nor warrant the condition of the vessel. A buyer should instruct his agents, or his surveyors, to investigate such details as the buyer desires validated. This vessel is offered subject to prior sale, price change, or withdrawal without notice.

Exclusions

Owner's personal belongings.

Disclaimer

The Company offers the details of this vessel or yacht in good faith but cannot guarantee or warrant the accuracy of this information nor warrant the condition of the vessel. A buyer should instruct his representatives, agents, or his surveyors, to investigate such details as the buyer desires validated. This vessel or yacht is offered subject to prior sale, price change, or withdrawal without notice.

PHOTOS

Profile



Salon View Forward



Salon Settee



Salon Port Side TV Deployed



Salon Port Side TV Hidden



Galley



Galley Dinette



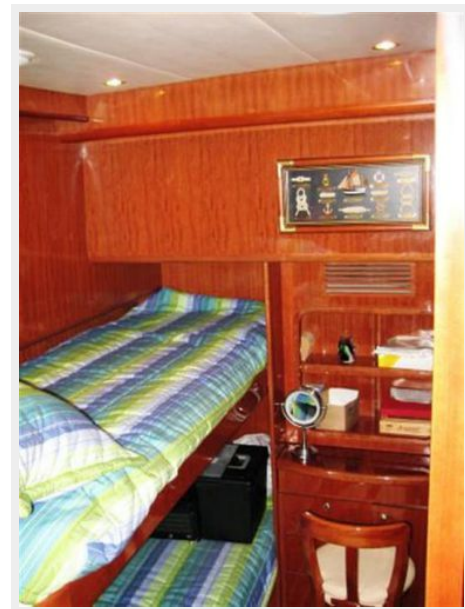
Master Stateroom



Guest Stateroom #1



Guest Stateroom #2/Office



Washer and Dryer



Flybridge Seating



Flybridge Helm Instruments



Steps Up to Flybridge



Walkaround Side Decks



Entry to Lazarette and Engine Room



Engine Room View Aft



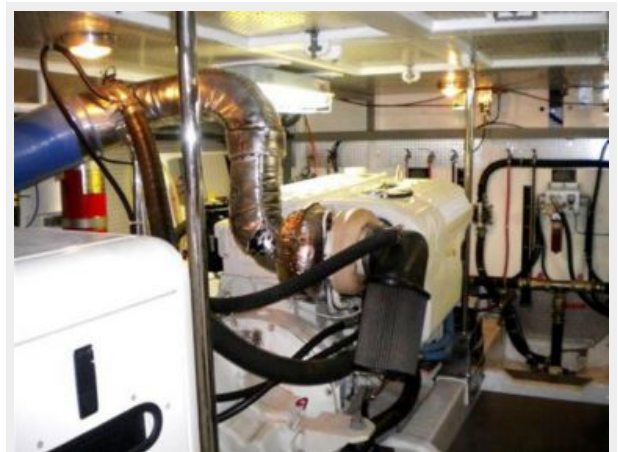
Engine Room - Port Main Engine



Engine Room - Stbd Main Engine



Engine Room



Props & Pockets



Foredeck



Aft View



Aft Deck



Bow Pulpit & Anchor



Foredeck View Aft



Props & Pockets



Hampton Chrome Logo



CONTACTS

Andrey Shestakov, leading yacht broker of the sales department of Shestakov Yacht Sales Inc. Shestakov Yacht Sales Inc., the official representative of the Miami/Fort Lauderdale FL headquarters.

Contact details

Email: andrey@shestakovyachtsales.com

Web: shestakovyachtsales.com/en/

Telephones

USA: +1(954)274-4435

Office hours

Monday – Saturday: **9:00 - 21:00** EDT

Sunday: **closed**

Address



Harbour Towne Marina, 850 NE 3rd St,
STE 213, Dania, FL 33004